

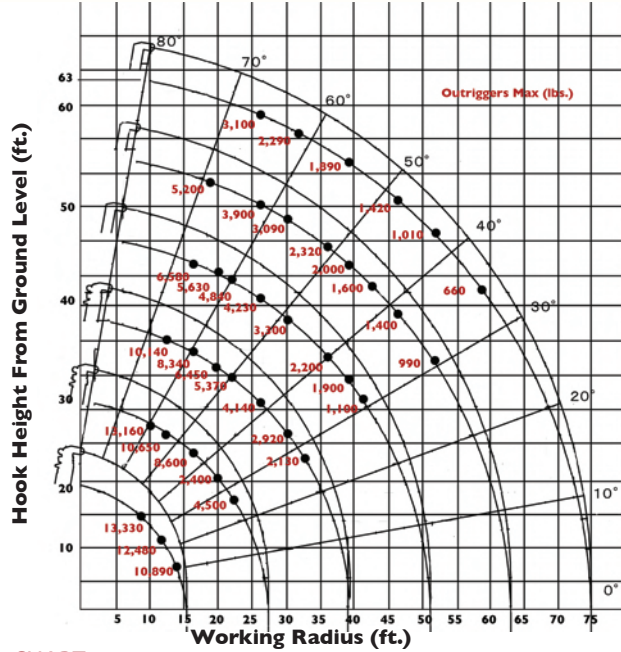


DESIGNED TO GO WHERE OTHER CRANES CAN'T

Engineered and manufactured by Japanese crane industry leader FURUKAWA UNIC Corp., the SPYDERCRANE offers versatility, maneuverability, and lifting capacity in a compact design; enabling you to quickly, safely and easily meet all of your confined-area lifting requirements. SPYDERCRANES are distributed in Canada by SPYDERCRANE Equipment Ltd. Each unit is backed by our 20-plus years of industry and application experience, complete inventory of genuine spare parts and accessories, and superior local service support.



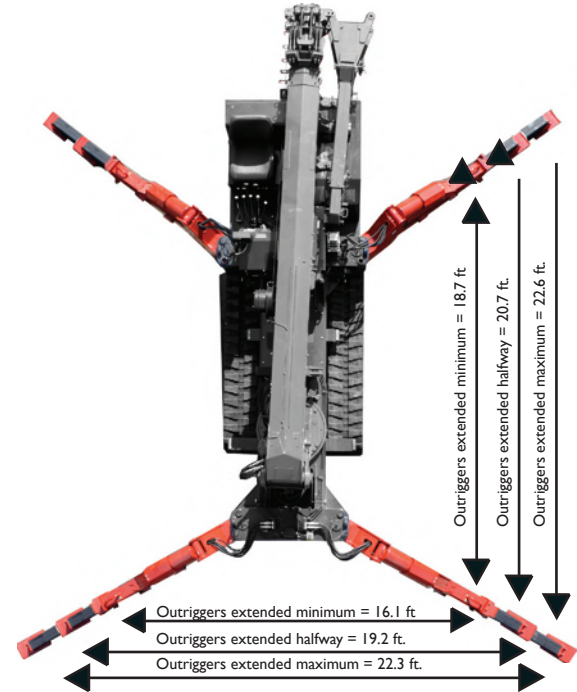
WORKING RADIUS



LOAD CHART

Lifting capacity varies depending on outrigger configuration and boom length and angle.

FIRST STAGE EXTENDED											
Working Radius (ft.)	9.0	10.0	11.5	13.0	14.0						
Outriggers Maximum (lbs.)	13,330	13,200	12,480	10,890	8,810						
Outriggers Halfway (lbs.)	13,330	13,200	12,480	10,890	8,810						
Outriggers Minimum (lbs.)	13,330	13,200	12,480	10,270	8,370						
ALL BOOMS RETRACTED AND SECOND STAGE EXTENDED											
Working Radius (ft.)	6.5	10.0	11.5	13.0	16.5	19.5	23.0	23.5			
Outriggers Maximum (lbs.)	13,330	13,160	12,300	10,650	8,600	6,400	5,040	4,500			
Outriggers Halfway (lbs.)	13,330	13,160	12,300	10,650	8,600	5,200	3,840	3,520			
Outriggers Minimum (lbs.)	13,330	13,160	12,300	10,440	5,900	3,550	2,630	2,420			
THIRD STAGE EXTENDED											
Working Radius (ft.)	9.0	13.0	16.5	19.5	23.0	26.0	30.0	32.0	33.0		
Outriggers Maximum (lbs.)	10,140	10,140	8,340	6,450	5,370	4,140	2,920	2,130	2,200		
Outriggers Halfway (lbs.)	10,140	10,140	8,340	5,480	3,950	3,010	2,100	1,600	1,650		
Outriggers Minimum (lbs.)	10,140	10,140	6,200	3,640	2,750	2,010	1,470	1,030	980		
FOURTH STAGE EXTENDED											
Working Radius (ft.)	16.5	19.5	23.0	26.0	30.0	32.0	36.0	39.0	42.0		
Outriggers Maximum (lbs.)	6,580	5,630	4,840	4,230	3,300	2,700	2,200	1,900	1,100		
Outriggers Halfway (lbs.)	6,580	5,580	4,170	3,240	2,430	1,950	1,550	1,340	990		
Outriggers Minimum (lbs.)	6,100	4,000	2,960	2,350	1,670	1,290	1,050	840	630		
FIFTH STAGE EXTENDED											
Working Radius (ft.)	19.5	26.0	30.0	32.0	36.0	39.0	43.0	46.0	49.0	52.0	
Outriggers Maximum (lbs.)	5,200	3,900	3,090	2,720	2,320	2,000	1,600	1,400	1,220	990	
Outriggers Halfway (lbs.)	5,200	3,470	2,520	2,160	1,770	1,450	1,180	990	770	650	
Outriggers Minimum (lbs.)	4,300	2,470	1,780	1,520	1,210	1,000	750	610	480	390	
SIXTH STAGE EXTENDED											
Working Radius (ft.)	26.0	32.0	39.0	46.0	52.0	59.0	61.0				
Outriggers Maximum (lbs.)	3,100	2,290	1,890	1,420	1,010	660	550				
Outriggers Halfway (lbs.)	3,100	2,280	1,560	1,090	790	550	440				
Outriggers Minimum (lbs.)	2,540	1,630	1,120	720	500	300	230				



**ASME
B30.5
COMPLIANT**

SPYDERCRANE



UNIC

URW706 MINI-CRAWLER CRANE

		URW706C2URS	URW706C2UMRS	
Crane capacity	Capacity:	13,200 lbs. @ 10.0 ft.		
Max working radius	Maximum:	1.7 to 61 ft.		
Max lifting height	Approximate:	75 ft.		
Turning radius (ft.)	Minimum:	TURNS WITHIN IT'S DIMENSIONS		
Dimensions (ft.)	Folded: (l x w x h)	18.4ft. X 5.47ft. X 7.16ft.		
Weight	Unladen:	17,590 lbs		
Outrigger point loading	Maximum:	Specific point landing available upon request		
Winch speed	Approximate:	Single line speed: 144.4 ft./minute at 4th layer Hook Speed: 36.1 ft./min at 4th layer with 4-part line	Diesel	Electric
			Single line speed: 58.1 ft./minute at 4th layer Hook Speed: 14.4 ft./min at 4th layer with 4-part line	
Telescopic system	Boom Length:	16 to 63 ft.		
	Hydraulic Telescopic with holding valves:	47.2 ft/52 sec	Diesel	Electric
	47.2 ft/90 sec			
	Boom type:	6- section hydraulically telescoping boom, hexagonal box construction		
Boom lift speed	Hydraulic with holding valves	0° to 80°/16 sec	Diesel	Electric
			0° to 80°/37 sec	
Swing rotation	Worm Drive	360 degrees continuous		
Traction System	Travel Speed:	Two Speed	Low: 1.86 mph	High: 3.92 mph
	Gradability:	23°		
	Track ground pressure:	12.47 psi		
Engine / Motor	Manufacturer:	Mitsubishi	Mitsubishi	
	Fuel Capacity:	19.6 gal	19.6 gal	N/A
	Maximum output:	31.51 HP	Diesel	Electric
			31.51 HP	10 HP / AC 208-240 V/3 Phase/60HZ
	Starting method:	Electric start as standard		
	Type:	Diesel	Diesel & Electric	
Standard and safety equipment	Full-function radio remote control, centrally located infinitely variable controls, onboard self-diagnostic computer system, hexagonal boom, anti-two block system, automatic hook stow system, hook safety latch, over-winding prevention device and alarm, working area limitation minimum wire rope automatic stop, hydraulic circuit pressure relief valve and bubble-style level for outrigger leveling, Rated Capacity Indicator, (L.M.I) Interlock Monitoring Outrigger System.			

Product specifications are subject to change without notice. No specific training or license is required to operate the SPYDERCRANE in most areas, but operators are responsible for knowing and meeting all local safety requirements and regulations.