

SPYDERCRANE



URW547 MINI-CRAWLER CRANE

TECHNICAL SPECIFICATIONS

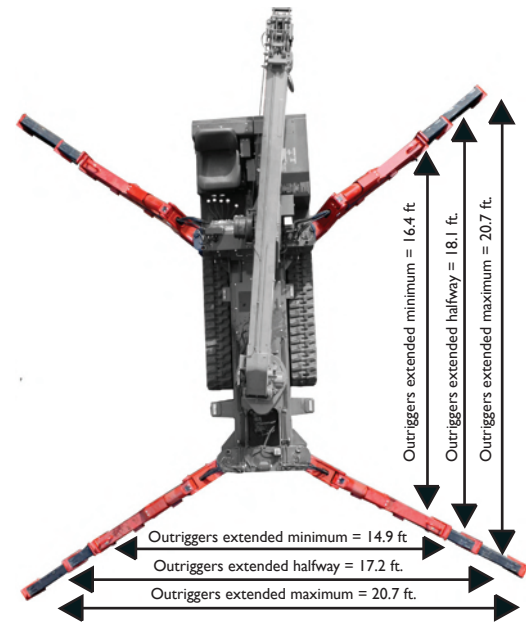
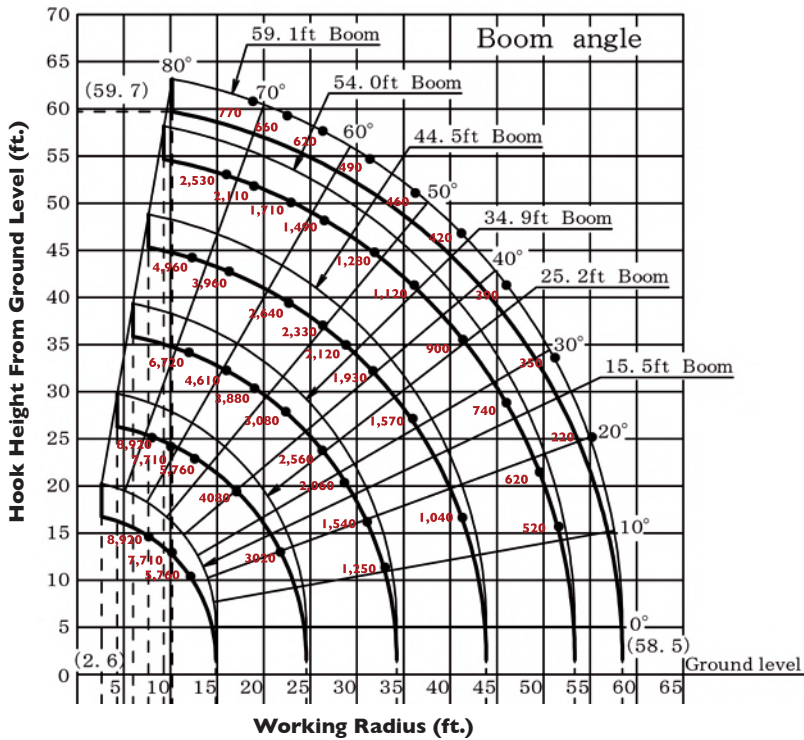
ASME/B-30.5 Compliant

DESIGNED TO GO WHERE OTHER CRANES CAN'T

Engineered and manufactured by the Japanese crane industry leader FURUKAWA UNIC Corp., the SPYDERCRANE offers versatility, maneuverability and lifting capacity in a compact design which enables you to quickly, safely and easily meet all of your restricted and confined-area lifting requirements. SPYDERCRANES are distributed in North America by SPYDERCRANE Sales, LLC. of Arizona. Each unit is backed by our 20-plus years of industry and application experience, complete inventory of genuine spare parts and accessories, and superior local service support.



WORKING RADIUS



LOAD CHART Lifting capacity varies depending on outrigger configuration and boom length and angle.

BOOM-SECTIONS EXTENDED: 15.5 FT. BOOM / 25.2 FT. BOOM															
Working Radius (ft.)	8.0	10.0	11.0	13.0	14.0	16.0	18.0	19.0	23.0	24.6					
Outriggers Maximum (lbs.)	8,920	7,710	7,010	5,760	5,350	4,610	4,080	3,830	3,080	2,970					
Outriggers Halfway (lbs.)	8,920	7,710	7,010	5,760	5,300	4,350	3,710	3,400	2,340	2,000					
Outriggers Minimum (lbs.)	8,920	7,710	7,010	5,760	5,160	3,960	3,020	2,660	1,760	1,470					
BOOM-SECTIONS EXTENDED: 34.9 FT. BOOM															
Working Radius (ft.)	11.0	13.0	16.0	19.0	23.0	26.0	29.0	32.0	34.3						
Outriggers Maximum (lbs.)	6,720	5,760	4,610	3,880	3,080	2,560	2,060	1,540	1,250						
Outriggers Halfway (lbs.)	6,720	5,760	4,350	3,350	2,540	1,980	1,580	1,250	1,060						
Outriggers Minimum (lbs.)	6,720	5,760	3,910	2,810	1,960	1,490	1,170	930	770						
BOOM-SECTIONS EXTENDED: 44.5 FT. BOOM															
Working Radius (ft.)	13.0	14.0	16.0	19.0	23.0	26.0	29.0	32.0	36.0	39.0	42.0	43.9			
Outriggers Maximum (lbs.)	4,960	4,510	3,960	3,230	2,640	2,330	2,120	1,930	1,570	1,240	1,040	940			
Outriggers Halfway (lbs.)	4,960	4,350	3,750	3,100	2,425	2,000	1,700	1,400	1,100	920	780	690			
Outriggers Minimum (lbs.)	4,960	4,350	3,750	2,810	1,870	1,540	1,290	1,030	810	670	550	480			
BOOM-SECTIONS EXTENDED: 54.0 FT. BOOM															
Working Radius (ft.)	16.0	18.0	19.0	23.0	26.0	29.0	32.0	36.0	39.0	42.0	46.0	49.0	52.0	53.4	
Outriggers Maximum (lbs.)	2,530	2,210	2,110	1,710	1,490	1,380	1,280	1,120	1,020	900	740	620	520	480	
Outriggers Halfway (lbs.)	2,530	2,210	2,110	1,650	1,440	1,280	1,140	1,000	890	790	660	540	450	420	
Outriggers Minimum (lbs.)	2,530	2,210	2,060	1,650	1,220	1,050	980	860	760	640	500	420	340	330	
BOOM-SECTIONS EXTENDED: 59.1 FT. BOOM															
Working Radius (ft.)	19.0	23.0	26.0	29.0	32.0	36.0	39.0	42.0	46.0	49.0	52.0	55.0	58.5		
Outriggers Maximum (lbs.)	770	660	620	560	490	460	440	420	390	370	350	300	220		
Outriggers Halfway (lbs.)	770	660	620	560	490	460	440	420	390	370	350	300	220		
Outriggers Minimum (lbs.)	770	660	620	560	490	460	440	420	390	370	350	300	220		

SPYDERCRANE



UNIC

547 Specs Sheet V.04

URW547 MINI-CRAWLER CRANE

		URW547C2URS	URW547C2UMRS
Crane capacity	Capacity:	8,920 lbs. @ 8.0 ft. with 4-part line	
Max working radius	Maximum:	2.6 - 58.5 ft.	
Max lifting height	Approximate:	59.7 ft.	
Turning radius (ft.)	Minimum:	TURNS WITHIN IT'S DIMENSIONS	
Dimensions (ft.)	Folded: (l x w x h)	16.2ft. X 4.5ft. X 6.5ft.	
Weight	Unladen:	11,070 lbs	
Outrigger point loading	Maximum:	Specific point landing available upon request	
Winch speed	Approximate:	Single line speed: 183.7 ft./minute at 5th layer Hook Speed: 45.9 ft./min at 5th layer with 4-part line	Diesel Electric
			Single line speed: 131.2 ft./minute at 4th layer Hook Speed: 32.8 ft./min at 4th layer with 4-part line
Telescopic system	Boom Length:	13.1 to 59.1 ft.	
	Hydraulic Telescopic with holding valves:	46.0 ft./35 sec	Diesel Electric
			38.67 ft./35 sec 38.67 ft./48 sec
	Boom type:	7- section hydraulicity telescoping boom, hexagonal box construction	
Boom lift speed	Hydraulic with holding valves	0° to 80°/18 sec	Diesel Electric
			0°to 80° /18 sec 0°to 80° /25 sec
Swing rotation	Worm Drive	360 degrees continuous	
Traction System	Travel Speed:	Two Speed	Low: 1.86 mph High: 3.96 mph
	Gradability:	23°	
	Track ground pressure:	6.82 psi	
Engine / Motor	Manufacturer:	Mitsubishi	Mitsubishi
	Fuel Capacity:	10.5 gal	10.51 gal N/A
	Maximum output:	21.1 HP	Diesel Electric
			21.1 HP 10 HP / AC 208-240 V/3 Phase/60HZ
	Starting method:	Electric start as standard	
	Type:	Diesel	Diesel & Electric
Standard and safety equipment	Full-function radio remote control, centrally loacted infinite variable controls, onboard self-diagnostic computer system, hexagnol boom, anti-two block system, automatic hook stow system, hook safety latch, over-winding prevention device and alarm, working area limitation minimum wire rope automatic stop, hydraulic circuit pressure relief valve and bubble-stlye level for outrigger leveling, Rated Capacity Indicator, (L.M.I) Interlock Monitoring Outrigger System.		

Product specifications are subject to change without notice. No specific training or license is required to operate the SPYDERCRANE in most areas, but operators are responsible for knowing and meeting all local safety requirements and regulations.