



# MODEL 1000 56-ft BOOM

## MAIN BOOM LOAD RATINGS WITH FULLY EXTENDED OUTRIGGERS

MAIN BOOM LOAD RATINGS											JIB LOAD RATINGS							
LOAD RATINGS IN LBS. WITH OUTRIGGERS AND STABILIZERS EXTENDED											LOAD RATINGS IN LBS. WITH OUTRIGGERS AND STABILIZERS EXTENDED							
LOAD RADIUS IN FEET	LOADED BOOM ANGLE		LOADED BOOM ANGLE	A	LOADED BOOM ANGLE	B	LOADED BOOM ANGLE	C	LOADED BOOM ANGLE	D	6-FT. FIXED LENGTH JIB		18-FT. FIXED LENGTH JIB		18-30 FT. EXTENDABLE JIB			
		22-FT.		32-FT.		40-FT.		48-FT.		56-FT.	LOADED BOOM ANGLE	6-FT. JIB	LOADED BOOM ANGLE	18-FT. JIB	LOADED BOOM ANGLE	18-FT. JIB RETRACTED	LOADED BOOM ANGLE	30-FT. JIB EXTENDED
5	75	20000																
10	62	11500	71	10500	75	9500					80	4500	80	2900	80	2800	80	1900
15	46	8000	62	7300	68	6700	72	6100	75	5600	75	4000	75	2400	75	2300	75	1600
20	20	5600	51	5400	60	5100	65	4800	69	4500	70	3500	70	2000	70	1900	70	1300
25			38	4200	51	4000	59	3800	64	3600	65	3000	65	1700	65	1600	65	1050
30			17	3400	41	3300	51	3200	58	3000	60	2700	60	1500	60	1400	60	900
35					28	2800	43	2700	51	2500	55	2400	55	1200	55	1100	55	800
40							33	2200	44	2100	50	2100	50	1100	50	1000	50	650
45							18	1900	36	1800	45	1800	45	950	45	850	45	550
50									26	1500	40	1500	40	850	40	750		
55									4	1200	30	1300	35	750	35	650		
											20	1100						
											10	1000						
	0	4500	0	2800	0	2000	0	1500	0	1200	0	900						
	230		160		120		100		90		DEDUCTIONS FOR STOWED FIXED LENGTH JIB							
	360		240		200		160		140		DEDUCTIONS FOR STOWED EXTENDABLE JIB							

## NOTICE

- DO NOT DEADHEAD LINE BLOCK AGAINST BOOM TIP WHEN EXTENDING BOOM

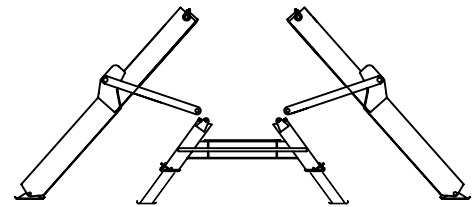
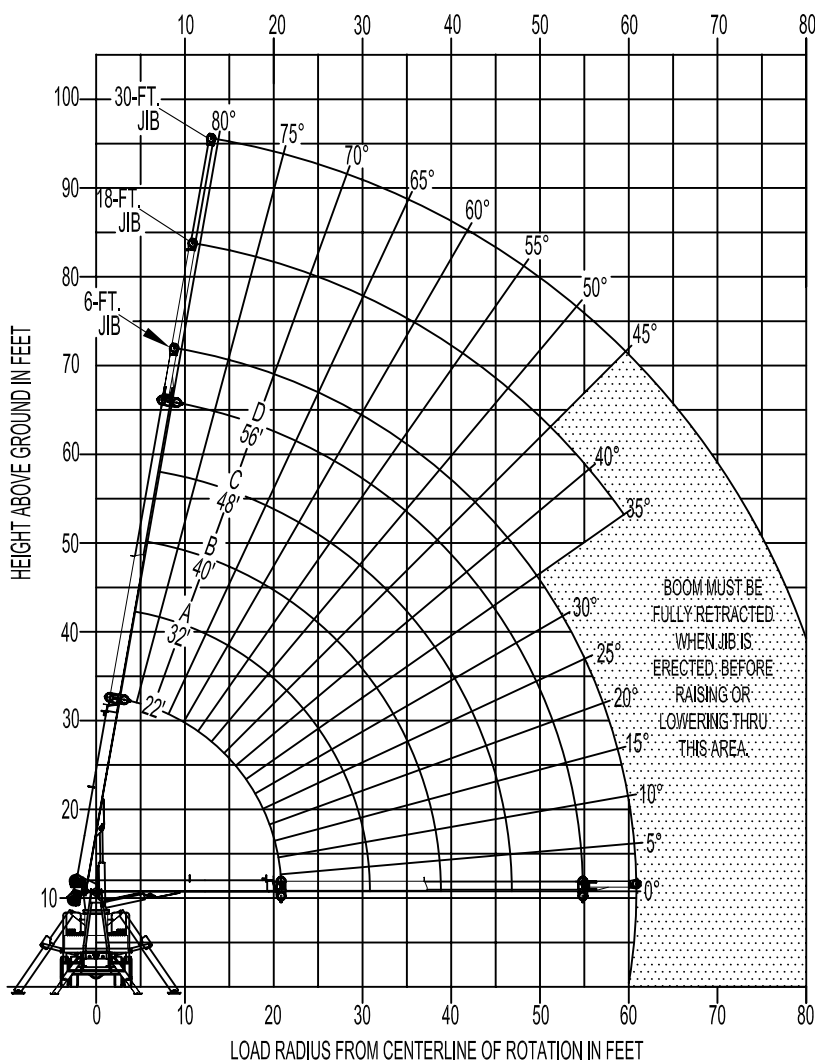
- KEEP AT LEAST 5 WRAPS OF LOADLINE ON THE WINCH DRUM AT ALL TIMES

- USE ONLY 9/16" DIAMETER WIRE ROPE, AS SPECIFIED BELOW, WITH THE PROPER BREAKING STRENGTHS LISTED

- ANTI-TWO-BLOCK SYSTEM MUST BE IN GOOD OPERATING CONDITION BEFORE OPERATING CRANE. SEE OPERATION & SAFETY MANUAL

1-PART LINE	2-PART LINE	3-PART LINE	ELLIOTT EQUIPMENT CO. SUPPLIED LOADLINE EQUIPMENT DEDUCTIONS: DOWNHAUL WEIGHT .....180 lbs ONE SHEAVE BLOCK.....375 lbs
MAX PULL: 9,600 lbs	19,200 lbs	20,000 lbs	
MAX PULL: 9,060 lbs	18,120 lbs	20,000 lbs	
MAX PULL: 7,680 lbs	15,360 lbs	20,000 lbs	9/16" - 6X37 IWRC (3.5:1 S.F.) 33,600-lbs. BREAKING STRENGTH
			9/16" - SPIN RESISTANT (5:1 S.F.) 45,300-lbs. BREAKING STRENGTH
			9/16" - SPIN RESISTANT (5:1 S.F.) 38,400-lbs. BREAKING STRENGTH

RANGE DIAGRAM



OUTRIGGERS AT FULL EXTENSION

### NOTE:

1. Operate jib by radius when main boom is full extended. Increase boom angle if necessary to maintain load radius.
2. When boom is retracted, operate jib by boom angles. Do not exceed any rated jib capacities at reduced boom lengths.
3. Capacities do not exceed 85% stability.
4. Load ratings above bold line are structurally limited.
5. Personnel handling is allowed only with full span outriggers.
6. Boom load ratings are based on loaded boom radius. Loaded boom angles are given as reference only.

### AREA OF OPERATION

