



# MODEL 1000 47-ft BOOM

## MAIN BOOM LOAD RATINGS WITH FULLY EXTENDED OUTRIGGERS

MAIN BOOM LOAD RATINGS								
LOAD RATINGS IN LBS. WITH OUTRIGGERS AND STABILIZERS EXTENDED								
LOAD RADIUS IN FEET	LOADED BOOM ANGLE	19-FT.	LOADED BOOM ANGLE	A 29-FT.	LOADED BOOM ANGLE	B 38-FT.	LOADED BOOM ANGLE	C 47-FT.
5	74	20000						
8	64	13500	74	11000	78	10500		
10	57	11500	69	10500	75	9500		
15	36	8000	59	7300	67	6700	72	6100
20			46	5400	58	5000	65	4600
25			29	4200	49	3900	58	3600
30					37	3300	50	3000
35					21	2800	42	2600
40							31	2200
45							14	1900
	0	5900	0	3600	0	2400	0	1700

## NOTICE

- DO NOT DEADHEAD LINE BLOCK AGAINST BOOM TIP WHEN EXTENDING BOOM

- KEEP AT LEAST 5 WRAPS OF LOADLINE ON THE WINCH DRUM AT ALL TIMES

- USE ONLY 9/16" DIAMETER WIRE ROPE, AS SPECIFIED BELOW, WITH THE PROPER BREAKING STRENGTHS LISTED

- ANTI-TWO-BLOCK SYSTEM MUST BE IN GOOD OPERATING CONDITION BEFORE OPERATING CRANE. SEE OPERATION & SAFETY MANUAL

1-PART LINE



2-PART LINE



3-PART LINE



ELLIOTT EQUIPMENT CO. SUPPLIED  
LOADLINE EQUIPMENT DEDUCTIONS:  
DOWNHAUL WEIGHT .....180 lbs  
ONE SHEAVE BLOCK.....375 lbs

MAX PULL: 9,600 lbs

19,200 lbs

20,000 lbs

9/16" - 6X37 IWRC (3.5:1 S.F.) 33,600-lbs. BREAKING STRENGTH

MAX PULL: 9,060 lbs

18,120 lbs

20,000 lbs

9/16" - SPIN RESISTANT (5:1 S.F.) 45,300-lbs. BREAKING STRENGTH

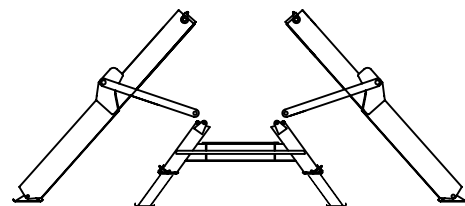
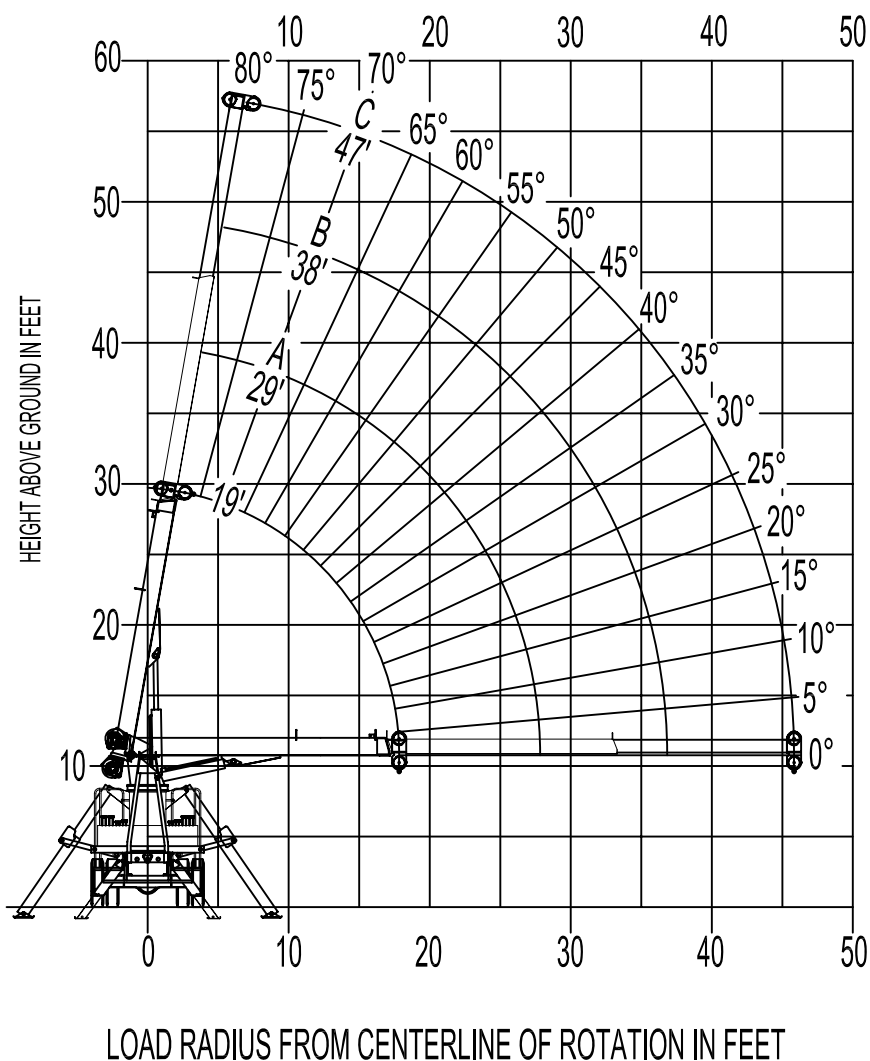
MAX PULL: 7,680 lbs

15,360 lbs

20,000 lbs

9/16" - SPIN RESISTANT (5:1 S.F.) 38,400-lbs. BREAKING STRENGTH

RANGE DIAGRAM



OUTRIGGERS AT FULL EXTENSION

NOTE:

1. Capacities do not exceed 85% stability.
2. Load ratings above bold line are structurally limited.
3. Personnel handling is allowed only with full span outriggers.
4. Boom load ratings are based on loaded boom radius.  
Loaded boom angles are given as reference only.

AREA OF OPERATION

