



# MODEL 1000 39-ft BOOM

## MAIN BOOM LOAD RATINGS

LOAD RATINGS IN LBS. WITH OUTRIGGERS FULLY EXTENDED HORIZONTALLY AND VERTICALLY									LOAD RATINGS IN LBS. WITH OUTRIGGERS EXTENDED VERTICALLY ONLY, NO HORIZONTAL EXTENSION								
LOAD RADUIS IN FEET	LOADED BOOM ANGLE	18-FT.	LOADED BOOM ANGLE	A 25-FT.	LOADED BOOM ANGLE	B 32-FT.	LOADED BOOM ANGLE	C 39-FT.	LOAD RADUIS IN FEET	LOADED BOOM ANGLE	18-FT.	LOADED BOOM ANGLE	A 25-FT.	LOADED BOOM ANGLE	B 32-FT.	LOADED BOOM ANGLE	C 39-FT.
5	71	20000							5	71	20000						
6	67	16500	74	14200					6	67	16500	74	14200				
8	60	14500	69	11750	74	11200			8	60	12800	69	11750	74	11200		
10	52	12000	64	10350	70	9750	75	8600	10	52	8500	64	8600	70	8650	75	8600
12	43	11000	60	9050	67	8300	71	7800	12	43	6250	60	6350	67	6400	71	6400
14	34	9400	54	8200	63	7400	68	7000	14	34	4800	54	4900	63	4950	68	4950
16			48	7500	59	6800	65	6250	16			48	3950	59	4000	65	4000
18			41	6950	54	6250	62	5550	18			41	3250	54	3250	62	3250
20			33	6300	50	5750	58	4900	20			33	2700	50	2750	58	2750
25					36	4950	49	4350	25					36	1850	49	1850
30							38	3700	30							38	1300
35							22	3100	35							22	900
	0	6800	0	4150	0	3000	0	2400		0	3250	0	1850	0	1150	0	700

## NOTICE

- DO NOT DEADHEAD LINE  
BLOCK AGAINST BOOM TIP  
WHEN EXTENDING BOOM

- KEEP AT LEAST 5 WRAPS OF  
LOADLINE ON THE WINCH DRUM  
AT ALL TIMES

- USE ONLY 9/16" DIAMETER  
WIRE ROPE, AS SPECIFIED  
BELOW, WITH THE PROPER  
BREAKING STRENGTHS LISTED

- ANTI-TWO-BLOCK SYSTEM MUST  
BE IN GOOD OPERATING CONDITION  
BEFORE OPERATING CRANE. SEE  
OPERATION & SAFETY MANUAL

1-PART LINE



2-PART LINE



3-PART LINE



ELLIOTT EQUIPMENT CO. SUPPLIED  
LOADLINE EQUIPMENT DEDUCTIONS:  
DOWNHAUL WEIGHT .....180 lbs  
ONE SHEAVE BLOCK.....375 lbs

MAX PULL: 9,600 lbs

19,200 lbs

20,000 lbs

9/16" - 6X37 IWRC (3.5:1 S.F.) 33,600-lbs. BREAKING STRENGTH

MAX PULL: 9,060 lbs

18,120 lbs

20,000 lbs

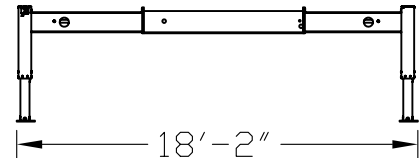
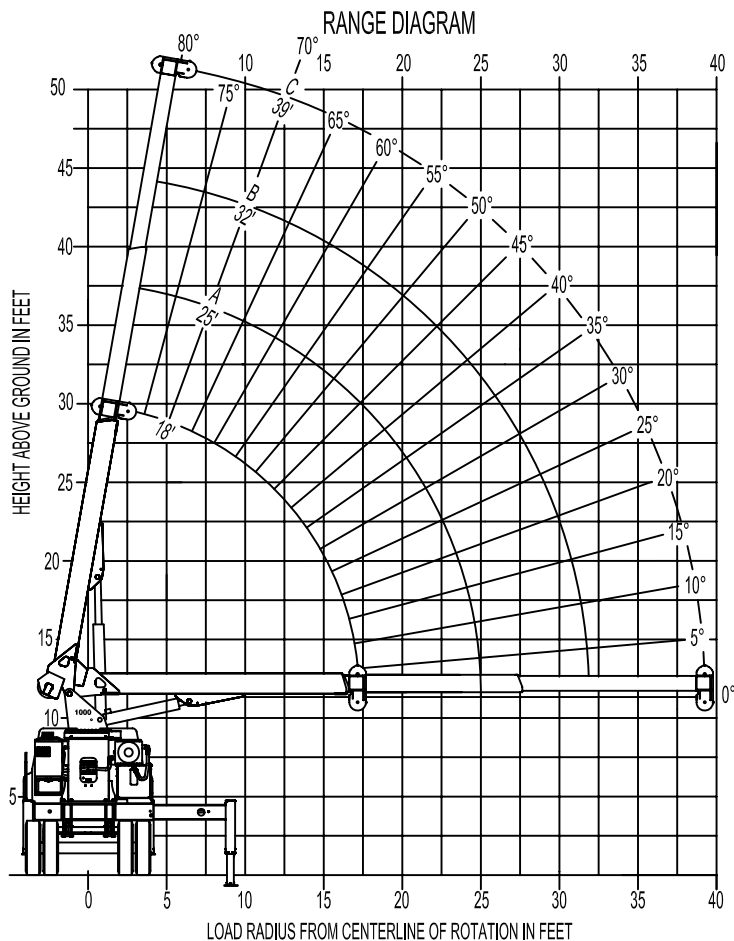
9/16" - SPIN RESISTANT (5:1 S.F.) 45,300-lbs. BREAKING STRENGTH

MAX PULL: 7,680 lbs

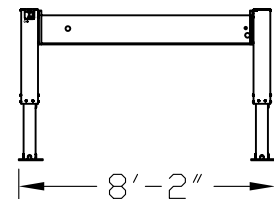
15,360 lbs

20,000 lbs

9/16" - SPIN RESISTANT (5:1 S.F.) 38,400-lbs. BREAKING STRENGTH



OUTRIGGERS AT FULL EXTENSION



OUTRIGGERS WITH NO HORIZONTAL EXTENSION

### NOTE:

1. Chart #1 capacities do not exceed 85% stability.
2. Chart #2 capacities do not exceed stability based on ISO 4305-1991
3. Load ratings above bold line are structurally limited.
4. Personnel handling is allowed only with full span outriggers.
5. Boom load ratings are based on loaded boom radius.  
Loaded boom angles are given as reference only.

### AREA OF OPERATION

