



**KOBELCO**

# Hydraulic Crawler Crane **CK550** A TOUCH OF THE FUTURE!

## Specifications

*Max. lifting capacity: 55 US tons at 10.5 ft*

*Max. total length (boom+jib): 190 ft*

*Max. boom length: 160 ft*



**KOBE STEEL, LTD.**



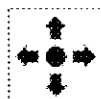
## Specifications

# UPPER MACHINERY



## Power Plant

Model.....	Mitsubishi 6D15T diesel
Type.....	Water cooled, direct fuel injection, with turbocharger
No. of cylinders.....	6
Bore and stroke.....	4.4" (113 mm) x 4.5" (115 mm)
Displacement.....	422 cu in (6,919 cc)
Rated power.....	153 hp (114 kW) SAE NET at 2,150 rpm (SAE J 1349)
Max. torque.....	568 N-m (58kgf-m) at 1,600 rpm (SAE J 1349)
Starter.....	24V, 4.5 kW
Generator.....	24V, 80 amp
Cycles.....	4
Radiator.....	Corrugated fin type core, thermostat controlled
Air cleaner.....	Two stage, dry
Batteries.....	Two 12 V, 150 A-hr capacity batteries, series connected
Fuel tank capacity.....	74 US gal (280 liters)



## Hydraulic System

**Pumps:** Three variable displacement plunger pumps and one gear pump are used. Two variable displacement plunger pumps are used in the propel circuits, boom hoist circuit and load hoist circuit. The other is used in the swing circuit and crawler extension circuit. The gear pump is used in the control system. Two plunger pumps are controlled by the Engine Speed Sensing (ESS) system, which automatically varies horsepower distribution according to work load. This system controls hydraulic oil flow and puts power where it's needed without wasting energy. The end result is highly efficient operation that utilizes 100% of engine's power.

**Control:** Horsepower summation hydraulic control system provides infinitely variable pressure to front and rear drums, boom, hoist brakes and clutches. Response to the operator's touch is instant, positive and smooth.

**Pressure:**

Load hoist, boom hoist and propel system .....	4,120 psi (290 kg/cm <sup>2</sup> )
Swing system .....	3,200 psi (225 kg/cm <sup>2</sup> )
Control system .....	1,490 psi (105 kg/cm <sup>2</sup> )
Hoist drum brake system .....	1,490 psi (105 kg/cm <sup>2</sup> )
Reservoir capacity .....	66 US gal (250 liters)

**Cooling:** Oil-to-air heat exchanger, mounted in front of radiator.

**Filtration:** Suction strainer, in-line strainer, return filter, and drain filters



### Boom Hoisting System

Powered by a hydraulic axial piston motor through a planetary reducer.

**Brake:** Spring-set, hydraulically released multiple-disc brake, mounted on the boom hoist motor and operated through a control valve.

**Drum lock:** Spring-set hydraulically released drum pawl, automatically actuated when boom is stopped.

**Drum:** One-piece cast drum, grooved for 5/8" (14 mm) dia. wire rope.

Line speed (Single line on first drum layer):

Hoisting (max.)	223 ft/min (68 m/min)
-----------------	-----------------------

Lowering (max.) ..... 223 ft/min (68 m/min)



## Load Hoist System

Tandem drums powered independently by two hydraulic axial piston motors through a planetary reducers.

**Clutches:** Internally expanding band clutches (splined on shaft).

24.5" (622 mm) dia. x 3.5" (98 mm) wide drum.

**Brakes:** Brake valves and externally contracting, spring-set, hydraulically released band brakes with both positive and negative actuation.

21.5" (500 mm) dia. x 4" (102 mm) wide drum.

**Drum locks:** Manual safety pawls (external ratchets)

**Drums (front and rear):** 16.5" (420 mm) P.C.D. x 16.9" (430 mm) wide drums, each grooved for 3/4" (20 mm) wire rope.

Wire rope length: 556 ft (170m)

Wire rope storage capacity: ..... 886 ft (270m)

Line speed (Single line on the first drum layer):

High ..... 230 ft/min (70 m/min)

Low 115 ft/min (35 m/min)



## Swing System

**Swing unit:** Independently powered by a hydraulic plunger motor through a planetary reducer; 360° of rotation.

Max. swing speed ..... 3.5 rpm

**Swing circle:** Single-row ball bearing with internal swing gear. Bolted to both upper structure and under carriage.

**Swing lock:** Two-position pin-in-hole lock (manual)

**Brake:** Spring-set, hydraulically released multiple-disc brake, mounted on the swing motor.



## Operator's Cab

Totally enclosed, full-vision cab fitted with safety glass and a sliding front window. A fully adjustable, high-backed seat permits all operators to set ideal working position. Signal horn, cigarette lighter, ashtray, windshield wipers, washer, floor mat and cab heater are standard features.



## Controls

Response to the operator's touch is instant, positive, and smooth.

### Check and Safety Monitor

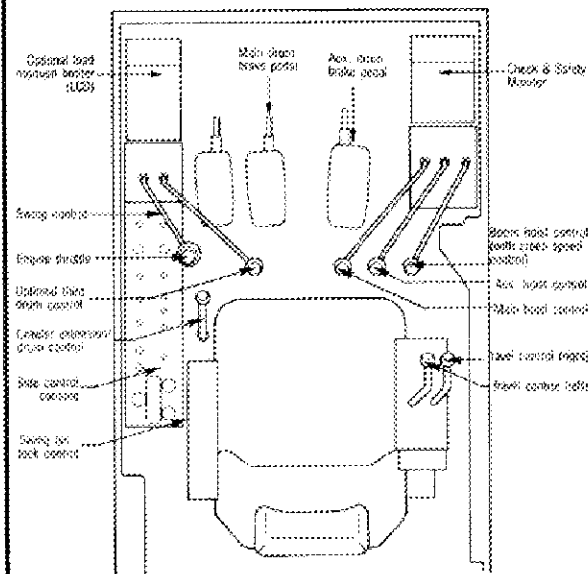
**Gauges:** Hourmeter, water temperature, fuel, and tachometer

**Warning lamps:** Charge, fuel level, control pressure, hydraulic oil temperature, water temperature, engine oil pressure, engine oil filter, CPU, and main hoist brake switch

**Safety lamps:** Cooling water (subtank) level and engine oil level

**Lever locks:** Aux. drum control, boom control, main drum control, optional third drum control, and travel control

**Others:** Swing lock (pin) and Drum lock (pawl)  
Optional load moment Indicator



## Mechatronic functions include

**ESS (Engine Speed Sensing)** Ensures full use of engine power at all times.

**SensaTouch Control** Permits operator to "feel" the movement and weight of the load through the control lever.

**An Ultra Slow-Speed Changeover Device Switch** Provides accurate and smooth hoisting and travel at low speed for bolt matching, pile placement, and other delicate operations.



## Gantry

Two-position, telescopic gantry, raised and lowered by boom hoist rope.

## Counterweight

Three-piece, mounted behind the machinery compartment.

Total weight ..... 33,180 lb (15,050 kg)

Counterweight	Dimension ft-in (mm)	Weight
No. 1	9-8 x 4-1 x 18" (2,950) x (1,250) x (455)	9,150 lb (4,150 kg)
No. 2	8-11 x 4-1 x 21" (2,730) x (1,250) x (520)	12,680 lb (5,750 kg)
No. 3	9-8 x 4-1 x 32" (2,950) x (1,250) x (810)	11,355 lb (5,150 kg)

NOTE: No.2 and No.3 counterweights are self-removable.



## Tools

Tool set and accessories for routine machine maintenance.



## Weight

**Operating weight:** Approx. 97,800 lb (45,200 kg) including 30 ft (9.14 m) boom, and standard counterweights

**Ground pressure:** ..... 8.1 psi (0.57 kg/cm<sup>2</sup>)



## LOWER MACHINERY

**Carbody:** Steel-welded carbody made of high strength with axles mated to crawler frames.

**Crawler:** Side frames can be hydraulically extended for wide-track operation or retracted for transportation. Extension cylinders operated with a valve in the upper control system. Crawler belt tension adjusted with hydraulic jack and maintained by shims between idler block and frame.

**Crawler drive:** Independent hydraulic propel drive built into each side frame, each with a piston motor propelling a driving wheel through a planetary gear box.

**Crawler brakes:** Brake valves and spring-set, hydraulically released multiple-disc parking brakes.

**Steering mechanism:** Differential speed steering (driving one track faster than the other), counter-rotating steering (driving tracks in opposite directions) and skid steering (driving one track only) with lever control.

**Track rollers:** 9 lower rollers in each side frame, high strength thrust plates on each top of crawler frames.

**Shoes:** Track link type

**Number**..... 59 each side

**Standard flat shoe width**..... 30" (760 mm)

**Optional flat shoe width**..... 36" (914 mm)

**Max. travel speed**..... approx 1 mph (1.4 km/h)

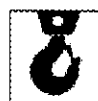
**Max. gradeability**..... 40%



### Jib (optional)

Welded lattice construction using tubular, high tensile chords with pin connections between sections.

<b>Max. lifting capacity</b>	5.5 US tons
<b>Max. jib length</b>	60 ft (18.29 m)
<b>Max. total length</b> (Boom length+jib length)	130 ft (39.62 m) + 60 ft (18.29 m)
<b>Jib</b>	<b>Weight lb (kg)</b>
<b>Jib Tip</b>	375 (170)
<b>Jib Base</b>	290 (130)
<b>Insert (10 ft)</b>	210 (95)
<b>Insert (20 ft)</b>	365 (165)



### Hook Blocks (Recommended)

Arrangement of hook blocks can be specified, each with a safety latch.

<b>Safety working limit</b> (us tons)	6.25	20.0	30.0	55.0
<b>Weight</b> (lb)	240	580	650	1100

### Wire rope specifications

#### Standard:

Load hoist

6 x 25 FW IWRC (7 x 7)..... 3/4" (20 mm)

Boom hoist (12-part line)

6 x 26 WS IWRC (7 x 7)..... 9/16" (14 mm)

Boom pendants (2-part line)..... 1 1/8" (28 mm)

#### Optional:

Jib hook hoist..... 3/4" (20 mm)

Jib back stay pendants..... 11/16" (18 mm)

Boom backstops recommended for all boom lengths.

### Line pull

(for Crane, dragline and clamshell)

	<b>Max. permissible</b>	<b>Max. available</b>
<b>Front</b>	16,800 lb	35,273 lb
<b>Rear</b>	16,800 lb	35,273 lb

NOTES: Max. available line pulls are not based on wire rope strength. See note page 6 for max. rated single part of line working loads.

Note: Please consult your local dealer for details concerning which features are standard and which are optional.

## ATTACHMENT



### Boom

Welded lattice construction using tubular, high tensile steel chords with pin connections between sections. Boom tip is open throat construction. Two idler sheaves and four point sheaves are provided as standard.

<b>Max. lifting capacity</b>	55 US tons
<b>Basic boom length</b>	30 ft (9.14 m)
<b>Max. boom length</b>	160 ft (48.77 m)
<b>Boom</b>	<b>Weight lb (kg)</b>
<b>Boom Tip</b>	2,050 (930)
<b>Boom Base</b>	1,300 (590)
<b>Insert (10 ft)</b>	530 (240)
<b>Insert (20 ft)</b>	950 (430)
<b>Insert (30 ft)</b>	1,260 (570)



# NOTES!

## Warnings!

The following points should be kept in mind when interpreting the load rating charts.

- Rated loads included in the charts are the maximum allowable freely suspended loads at a given boom length, boom angle and load radius, and have been determined for the machine standing level on firm supporting surface under ideal operating conditions. The user must limit or de-rate rated loads to allow for adverse conditions (such as soft or uneven ground, out-of-level conditions, wind, side loads, pendulum action, jerking or sudden stopping of loads, inexperience of personnel, multiple machine lifts, and traveling with a load).
- Capacities are based on factors other than machine stability such as structural strength or 75% of minimum tipping loads, whichever is smaller.
- Max. rated single line pull is 12,566 lb at 221 FPM when using in one to seven parts of line, 13,800 lb in eight parts of line.
- The machine must be reeved and set-up as stated in the operation manual and all the instruction manuals if these manuals are missing, obtain replacements.
  - \* Boom backstops are required for all boom lengths.
  - \* Gantry must be in fully raised position for all operations.
  - \* Crawlers must be fully extended and be locked in position.
  - \* The crane must be leveled to within 1% on a firm supporting surface.
- Attempting to lift more than rated loads may cause machine to tip or collapse. Do not tip machine to determine capacity.
- Weight of hooks, hook blocks, slings and other lifting devices are a part of the total load. Their total weight must be subtracted from the rated load to obtain the weight that can be lifted.
- When lifting over boom point with jib or auxiliary sheave, rated loads for the boom must be deducted as shown below.

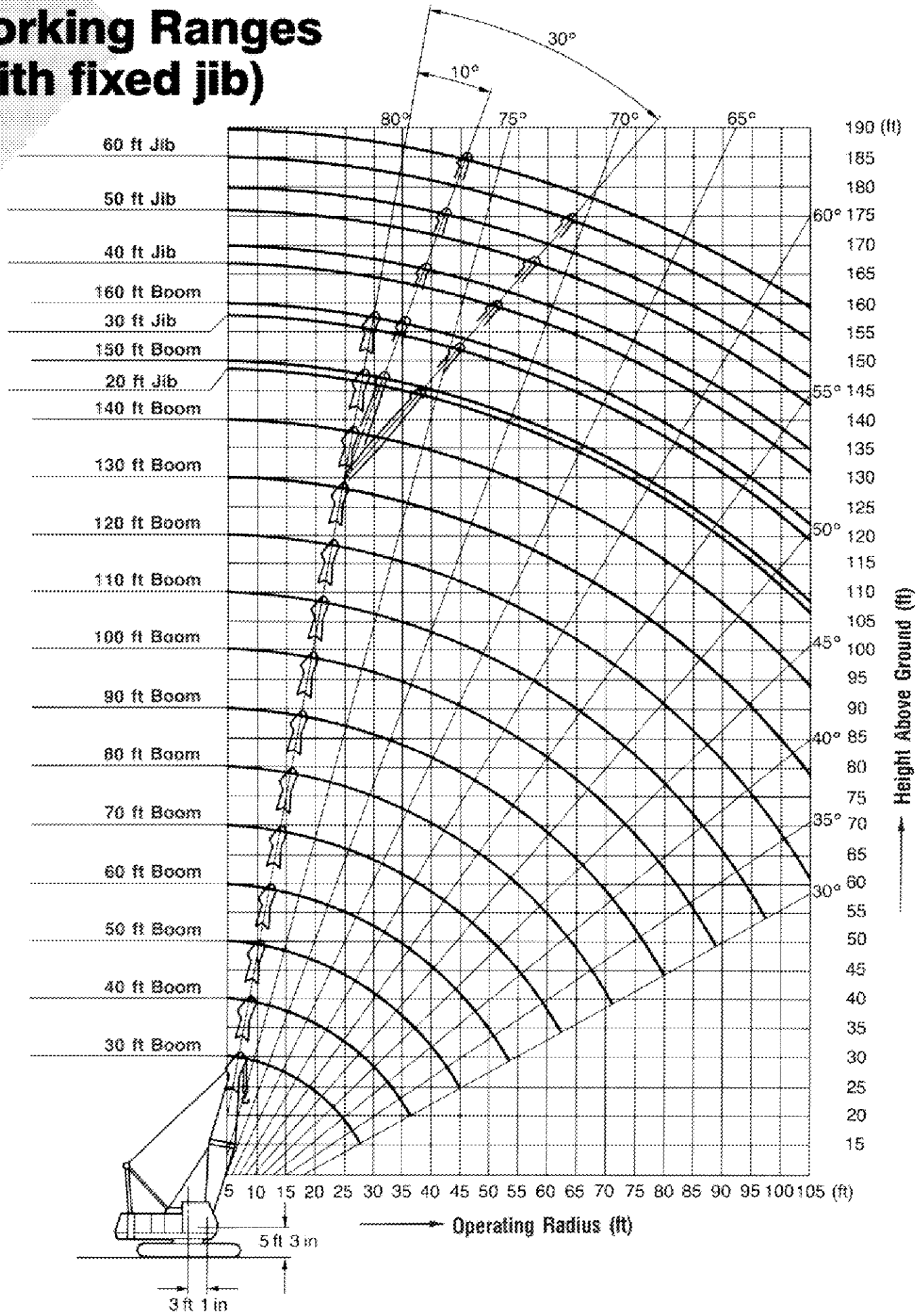
Jib Length	Aux. sheave	20 ft (6.10 m)	30 ft (9.14 m)	40 ft (12.19 m)	50 ft (15.24 m)
Deduct	330 lb (150 kg)	1,760 lb (800 kg)	1,980 lb (900 kg)	2,200 lb (1,000 kg)	2,430 lb (1,100 kg)

- The total load that can be lifted over a jib is limited by rated jib loads.
- Boom lengths for jib mounting are 90 ft. (27.43 m) to 130 ft (39.62 m).
- An auxiliary sheave cannot be used on a 160 ft (48.77 m) boom length.
- The boom should be erected over the front of the crawlers, not laterally.
- Least stable position is over the side.
- Lifting capacities listed apply only to the machine as originally manufactured and designed by KOBE STEEL, LTD. modifications to this machine or use of equipment other than that specified can reduce operating capacity.
- Designed and rated to comply with ANSI Code B30.5.



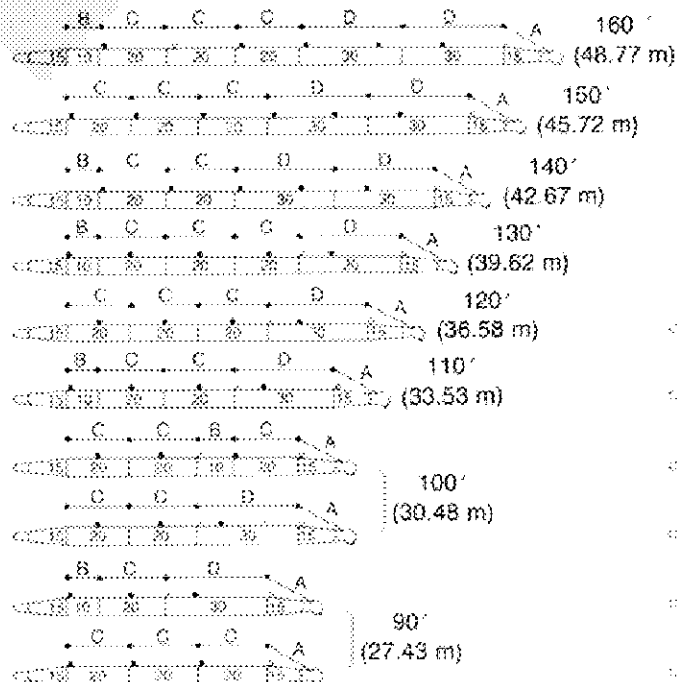


## Working Ranges (with fixed jib)





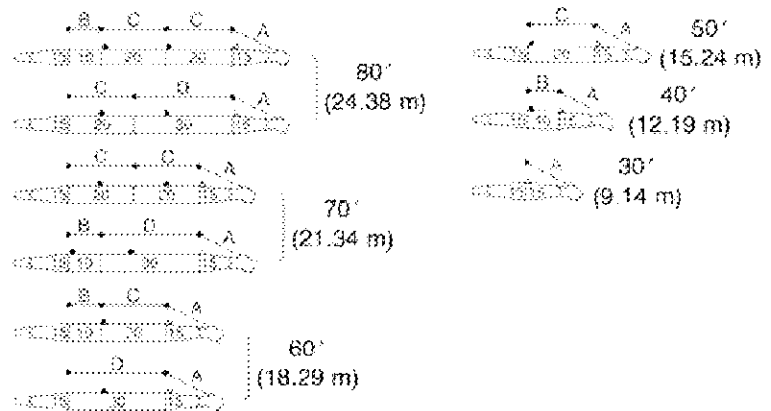
# Boom And Guy Line Arrangement



Symbol	Dimensions of Guy Line	
	Diameter in (mm)	Length ft-in (m)
A	1 1/8 (28)	13-7 (4.14)
B	1 1/8 (28)	10-0 (3.05)
C	1 1/8 (28)	20-0 (6.10)
D	1 1/8 (28)	30-0 (9.14)

For most efficient use of this machine, boom and guy line arrangement must be correctly observed as shown in this figure.

- Location of jib backstay anchor
- Location of cable roller on boom tip
- Location of cable roller on boom insert

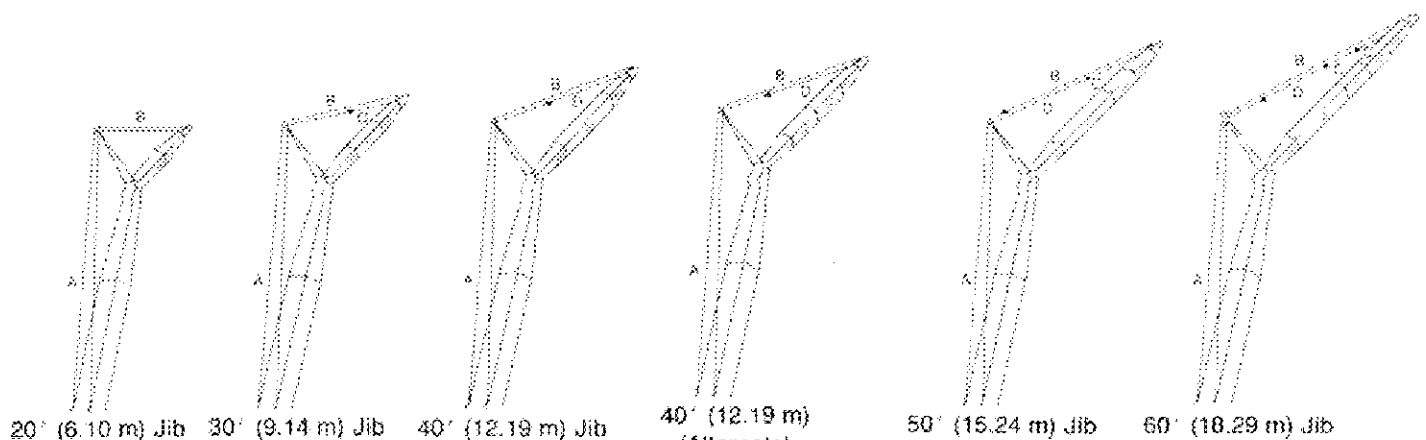


# Jib And Jib Guy Line Arrangement

Symbol	Dimensions of Guy Line	
	Diameter in (mm)	Length ft-in (m)
A	11/16 (18)	92-5 (28.16)
A'	11/16 (18)	6-3 (1.90)
B	11/16 (18)	47-3 (14.41)
C	11/16 (18)	18-7 (5.67)
D	11/16 (18)	37-6 (11.44)

This figure shows the arrangement when the jib offset angle is 10 degrees.

When setting the offset angle to 30 degrees, add the additional guy line A' to the boom side guy line A.





**CK550 Lifting Capacity****LIFT CRANE SERVICE**

Refer to notes page 6.

No. of Counterweight : 3  
Position of Crawler : Extended

Boom Length (ft)	Load Radius (ft)	Boom Angle (degree)	Boom Point Elev. (ft)	360° Rated Load (lbs)	Boom Length (ft)	Load Radius (ft)	Boom Angle (degree)	Boom Point Elev. (ft)	360° Rated Load (lbs)
<b>30</b>	10.5	77.5	34.30	110000	<b>60</b>	15.0	79.4	64.00	77800
	12.0	74.5	33.90	100000		16.0	78.4	63.80	72200
	13.0	72.5	33.60	92300		17.0	77.5	63.60	68700
	14.0	70.4	33.20	85600		18.0	76.5	63.40	62600
	15.0	68.4	32.80	85600		19.0	75.5	63.10	57500
	16.0	66.3	32.30	72200		20.0	74.5	62.80	53100
	17.0	64.1	31.80	69300		21.0	73.5	62.50	49300
	18.0	62.0	31.30	63200		22.0	72.5	62.20	46000
	19.0	59.7	30.70	58000		23.0	71.5	61.80	43100
	20.0	57.5	30.00	53700		24.0	70.5	61.50	40500
	21.0	55.1	29.30	49900		25.0	69.5	61.10	38200
	22.0	52.7	28.50	46600		26.0	68.4	60.70	36100
	23.0	50.2	27.70	43700		27.0	67.4	60.30	34300
	24.0	47.6	26.80	41100		28.0	66.3	59.80	32800
	25.0	44.9	25.80	38900		29.0	65.3	59.40	31000
	26.0	42.0	24.60	36800		30.0	64.2	58.90	29600
	27.0	39.0	23.40	34900		32.0	62.1	57.80	27100
	28.0	36.7	22.00	33200		34.0	59.9	56.70	25000
	29.0	32.1	20.40	30800		36.0	57.6	55.40	23100
	30.0	28.1	18.60	28100		38.0	55.3	54.10	21500
						40.0	52.9	52.60	20100
						45.0	46.8	48.20	17200
						50.0	39.5	42.70	14900
						55.0	31.0	35.40	13200
<b>40</b>	12.0	78.4	44.20	100000	<b>70</b>	17.0	79.3	73.80	66200
	13.0	77.0	44.00	92300		18.0	78.5	73.60	62500
	14.0	75.5	43.70	85600		19.0	77.6	73.40	57400
	15.0	74.0	43.40	85400		20.0	76.8	73.20	53000
	16.0	72.5	43.10	72200		21.0	75.9	72.90	49200
	17.0	71.0	42.70	69000		22.0	75.1	72.60	45900
	18.0	69.4	42.30	63000		23.0	74.2	72.40	43000
	19.0	67.9	41.90	57800		24.0	73.4	72.00	40400
	20.0	66.3	41.50	53400		25.0	72.5	71.70	38100
	21.0	64.7	41.00	49700		26.0	71.6	71.40	36000
	22.0	63.1	40.50	46400		27.0	70.8	71.00	34100
	23.0	61.5	39.90	43400		28.0	69.9	70.70	32400
	24.0	59.8	39.30	40900		29.0	69.0	70.30	30900
	25.0	58.1	38.70	38600		30.0	68.1	69.90	29500
	26.0	56.4	38.00	36500		32.0	66.4	69.00	26900
	27.0	54.6	37.30	34600		34.0	64.6	66.10	24800
	28.0	52.8	36.50	33000		36.0	62.7	67.00	23000
	29.0	51.0	35.70	31400		38.0	60.8	65.90	21300
	30.0	49.0	34.80	30000		40.0	58.9	64.70	19900
	32.0	45.0	32.90	27500		45.0	54.0	61.30	17000
	34.0	40.7	30.60	25400		50.0	48.7	57.20	14800
	36.0	36.0	28.00	23500		55.0	42.9	52.20	13000
	38.0	30.6	24.80	22000		60.0	36.4	46.00	11600
						65.0	28.6	38.00	10400
<b>50</b>	13.0	79.6	54.20	92300	<b>80</b>	18.0	79.9	83.80	57600
	14.0	78.4	54.00	85600		19.0	79.2	83.60	56800
	15.0	77.3	53.80	85300		20.0	78.4	83.40	52800
	16.0	76.1	53.50	72200		21.0	77.7	83.20	49000
	17.0	74.9	53.30	68900		22.0	77.0	82.90	45700
	18.0	73.7	53.00	62800		23.0	76.2	82.70	42800
	19.0	72.5	52.60	57700		24.0	75.5	82.40	40200
	20.0	71.3	52.30	53300		25.0	74.8	82.20	37900
	21.0	70.1	51.90	49500		26.0	74.0	81.90	35900
	22.0	68.8	51.50	46200		27.0	73.3	81.60	34000
	23.0	67.6	51.10	43300		28.0	72.5	81.20	32300
	24.0	66.3	50.70	40700		29.0	71.8	80.90	30700
	25.0	65.1	50.20	38400		30.0	71.0	80.60	29300
	26.0	63.8	49.70	36300		32.0	69.5	79.80	26800
	27.0	62.5	49.20	34500		34.0	67.9	79.00	24600
	28.0	61.2	48.60	32800		36.0	66.4	78.10	22800
	29.0	59.8	48.00	31200		38.0	64.8	77.20	21200
	30.0	58.5	47.40	29800		40.0	63.2	76.20	19700
	32.0	56.7	46.00	27300		45.0	59.1	73.40	16800
	34.0	52.9	44.50	25200		50.0	54.8	70.00	14600
	36.0	49.9	42.90	23300		55.0	50.2	66.10	12800
	38.0	46.8	41.00	21700		60.0	45.3	61.50	11300
	40.0	43.5	39.00	20300		65.0	40.0	55.90	10100
	45.0	34.1	32.50	17400		70.0	33.9	49.10	9200
						75.0	26.7	40.30	8300
						76.0	25.0	38.20	8200

**CK550 Lifting Capacity****LIFT CRANE SERVICE**

Refer to notes page 6.

No. of Counterweight : 3  
Position of Crawler : Extended

Boom Length (ft)	Load Radius (ft)	Boom Angle (degree)	Boom Point Elev. (ft)	360° Rated Load (lbs)	Boom Length (ft)	Load Radius (ft)	Boom Angle (degree)	Boom Point Elev. (ft)	360° Rated Load (lbs)
<b>90</b>	20.0	79.8	93.60	50100	<b>120</b>	25.0	79.9	123.20	33300
	21.0	79.1	93.40	48900		26.0	79.4	123.00	33000
	22.0	78.5	93.20	45500		27.0	78.9	122.80	32700
	23.0	77.8	93.00	42600		28.0	78.5	122.60	31700
	24.0	77.1	92.80	40000		29.0	78.0	122.40	30200
	25.0	76.5	92.50	37700		30.0	77.5	122.20	28700
	26.0	75.8	92.30	35600		32.0	76.5	121.70	26200
	27.0	75.2	92.00	33800		34.0	75.5	121.20	24100
	28.0	74.5	91.70	32100		36.0	74.5	120.60	22200
	29.0	73.8	91.40	30500		38.0	73.5	120.10	20600
	30.0	73.2	91.10	29100		40.0	72.5	119.40	19100
	32.0	71.8	90.50	26600		45.0	70.0	117.70	16200
	34.0	70.5	89.70	24400		50.0	67.4	115.70	13900
	36.0	69.1	89.00	22600		55.0	64.8	113.40	12200
	38.0	67.8	88.20	21000		60.0	62.1	110.90	10700
	40.0	66.4	87.30	19500		65.0	59.4	108.00	9500
	45.0	62.8	84.90	16600		70.0	56.6	104.90	8500
	50.0	59.2	82.00	14400		75.0	53.6	101.30	7600
	55.0	55.4	78.80	12600		80.0	50.6	97.40	6900
	60.0	51.4	75.00	11100		85.0	47.4	93.00	6200
<b>100</b>	65.0	47.1	70.60	9900	<b>130</b>	90.0	44.0	88.00	5600
	70.0	42.6	65.40	8900		95.0	40.5	82.40	5100
	75.0	37.6	59.40	8100		100.0	36.6	76.10	4700
	80.0	31.9	52.00	7400		110.0	27.5	59.60	3900
	85.0	25.1	42.60	6700					
	22.0	79.6	103.40	43300		27.0	79.8	133.00	29200
	23.0	79.0	103.20	42500		28.0	79.4	132.80	29000
	24.0	78.5	103.00	39900		29.0	78.9	132.60	28700
	25.0	77.9	102.80	37600		30.0	78.5	132.40	28300
	26.0	77.3	102.60	35500		32.0	77.6	132.00	26000
	27.0	76.7	102.30	33600		34.0	76.6	131.50	23900
	28.0	76.1	102.10	31900		36.0	75.7	131.00	22000
	29.0	75.5	101.80	30400		38.0	74.8	130.40	20400
	30.0	74.9	101.50	29000		40.0	73.9	129.90	18900
	32.0	73.7	101.00	26400		45.0	71.6	128.30	16000
	34.0	72.5	100.30	24300		50.0	69.2	126.50	13700
	36.0	71.3	99.70	22400		55.0	66.9	124.40	11900
	38.0	70.1	98.90	20800		60.0	64.4	122.10	10500
	40.0	68.9	98.20	19400		65.0	62.0	119.50	9300
	45.0	65.7	96.00	16500		70.0	59.4	116.70	8200
<b>110</b>	50.0	62.6	93.50	14200		75.0	56.8	113.50	7400
	55.0	59.3	90.70	12400		80.0	54.1	110.00	6600
	60.0	55.8	87.50	11000		85.0	51.3	106.20	6000
	65.0	52.3	83.80	9800		90.0	48.4	101.90	5400
	70.0	48.5	79.60	8700		95.0	45.4	97.20	4900
	75.0	44.6	74.70	7900		100.0	42.2	91.90	4400
	80.0	40.3	69.20	7100		110.0	35.1	79.20	3700
	85.0	35.5	62.60	6500		120.0	26.3	62.10	3100
	90.0	30.2	54.70	6000					
	24.0	79.5	113.20	38000	<b>140</b>	30.0	79.3	142.60	25300
	25.0	79.0	113.00	37500		32.0	78.5	142.20	24700
	26.0	78.5	112.80	35400		34.0	77.6	141.80	23700
	27.0	77.9	112.60	33500		36.0	76.8	141.30	21900
	28.0	77.4	112.40	31800		38.0	75.9	140.80	20200
	29.0	76.9	112.10	30200		40.0	75.1	140.30	18800
	30.0	76.3	111.90	28800		45.0	73.0	138.80	15800
	32.0	75.2	111.40	26300		50.0	70.8	137.10	13600
	34.0	74.2	110.80	24200		55.0	68.6	135.20	11800
	36.0	73.1	110.20	22300		60.0	66.4	133.10	10300
	38.0	72.0	109.50	20700		65.0	64.1	130.80	9100
	40.0	70.9	108.90	19200		70.0	61.8	128.20	8100
	45.0	68.1	106.90	16300		75.0	59.5	125.30	7200
	50.0	65.2	104.70	14000		80.0	57.1	122.20	6500
	55.0	62.3	102.20	12300		85.0	54.6	118.80	5900
	60.0	59.3	99.40	10800		90.0	52.0	115.00	5200
	65.0	56.2	96.20	9600		95.0	49.3	110.80	4700
	70.0	53.0	92.60	8600		100.0	46.6	106.30	4300
	75.0	49.7	88.50	7700		110.0	40.6	95.60	3500
<b>120</b>	80.0	46.1	83.90	7000		120.0	33.8	82.30	2900
	85.0	42.4	78.70	6300		130.0	25.4	64.40	2400
	90.0	38.3	72.70	5800					
	95.0	33.8	65.70	5300					
	100.0	28.7	57.30	4800					



LIFT CRANE SERVICE

Refer to notes page 6.

No. of Counterweight : 3  
Position of Crawler : Extended

41

**CK550 Lifting Capacity****LIFT CRANE SERVICE**

Refer to notes page 6.

No. of Counterweight: 2  
Position of Crawler: Extended

Boom Length (ft)	Load Radius (ft)	Boom Angle (degree)	Boom Point Elev. (ft)	360° Rated Load (lbs)	Boom Length (ft)	Load Radius (ft)	Boom Angle (degree)	Boom Point Elev. (ft)	360° Rated Load (lbs)
<b>30</b>	12.0	74.5	33.90	100000	<b>60</b>	15.0	79.4	64.00	68100
	13.0	72.5	33.60	89500		16.0	78.4	63.80	60800
	14.0	70.4	33.20	77600		17.0	77.5	63.60	54900
	15.0	68.4	32.80	68500		18.0	76.5	63.40	49900
	16.0	66.3	32.30	61200		19.0	75.5	63.10	45800
	17.0	64.1	31.80	55300		20.0	74.5	62.80	42300
	18.0	62.0	31.30	50400		21.0	73.5	62.50	39200
	19.0	59.7	30.70	46300		22.0	72.5	62.20	36500
	20.0	57.5	30.00	42800		23.0	71.5	61.80	34200
	21.0	55.1	29.30	39800		24.0	70.5	61.50	32100
	22.0	52.7	28.50	37100		25.0	69.5	61.10	30300
	23.0	50.2	27.70	34800		26.0	68.4	60.70	28600
	24.0	47.6	26.80	32700		27.0	67.4	60.30	27100
	25.0	44.9	25.80	30900		28.0	66.3	59.80	25700
	26.0	42.0	24.80	29200		29.0	65.3	59.40	24500
	27.0	39.0	23.40	27700		30.0	64.2	58.90	23400
	28.0	35.7	22.00	26400		32.0	62.1	57.80	21300
	29.0	32.1	20.40	25100		34.0	59.9	56.70	19600
	30.0	28.1	18.60	24000		36.0	57.6	55.40	18100
						38.0	55.3	54.10	16800
						40.0	52.9	52.60	15700
						45.0	48.6	48.20	13400
						50.0	39.5	42.70	11600
						55.0	31.0	35.40	10200
<b>40</b>	12.0	78.4	44.20	100000	<b>70</b>	17.0	79.3	73.80	54800
	13.0	77.0	44.00	89400		18.0	78.5	73.60	49800
	14.0	75.5	43.70	77500		19.0	77.6	73.40	45700
	15.0	74.0	43.40	68300		20.0	76.8	73.20	42200
	16.0	72.5	43.10	61000		21.0	75.9	72.90	39100
	17.0	71.0	42.70	55100		22.0	75.1	72.60	36400
	18.0	69.4	42.30	50200		23.0	74.2	72.40	34100
	19.0	67.9	41.90	46100		24.0	73.4	72.00	32000
	20.0	66.3	41.50	42600		25.0	72.5	71.70	30200
	21.0	64.7	41.00	39500		26.0	71.6	71.40	28500
	22.0	63.1	40.50	36900		27.0	70.8	71.00	27000
	23.0	61.5	39.90	34500		28.0	69.9	70.70	25600
	24.0	59.8	39.30	32500		29.0	69.0	70.30	24400
	25.0	58.1	38.70	30600		30.0	68.1	69.90	23200
	26.0	56.4	38.00	29000		32.0	66.4	69.00	21200
	27.0	54.6	37.30	27500		34.0	64.6	68.10	19500
	28.0	52.8	36.50	26100		36.0	62.7	67.00	18000
	29.0	51.0	35.70	24900		38.0	60.8	65.90	16700
	30.0	49.0	34.80	23700		40.0	58.9	64.70	15600
	32.0	45.0	32.90	21700		45.0	54.0	61.30	13300
	34.0	40.7	30.60	20000		50.0	48.7	57.20	11400
	36.0	36.0	28.00	18500		55.0	42.9	52.20	10000
	38.0	30.6	24.80	17300		60.0	38.4	46.00	8800
						65.0	28.6	38.00	7900
<b>50</b>	13.0	79.6	54.20	89200	<b>80</b>	18.0	79.9	83.80	49700
	14.0	78.4	54.00	77300		19.0	79.2	83.60	45800
	15.0	77.3	53.80	68200		20.0	78.4	83.40	42000
	16.0	76.1	53.50	60900		21.0	77.7	83.20	39000
	17.0	74.9	53.30	55000		22.0	77.0	82.90	36300
	18.0	73.7	53.00	50100		23.0	76.2	82.70	34000
	19.0	72.5	52.60	45900		24.0	75.5	82.40	31900
	20.0	71.3	52.30	42400		25.0	74.8	82.20	30000
	21.0	70.1	51.90	39400		26.0	74.0	81.90	28300
	22.0	68.6	51.50	36700		27.0	73.3	81.60	26800
	23.0	67.6	51.10	34400		28.0	72.5	81.20	25500
	24.0	66.3	50.70	32300		29.0	71.8	80.90	24200
	25.0	65.1	50.20	30400		30.0	71.0	80.60	23100
	26.0	63.8	49.70	28800		32.0	69.5	79.80	21100
	27.0	62.5	49.20	27300		34.0	67.9	79.00	19300
	28.0	61.2	48.60	25900		36.0	66.4	78.10	17800
	29.0	59.8	48.00	24700		38.0	64.8	77.20	16500
	30.0	58.5	47.40	23500		40.0	63.2	76.20	15400
	32.0	55.7	46.00	21500		45.0	59.1	73.40	13000
	34.0	52.9	44.50	19800		50.0	54.8	70.00	11200
	36.0	49.9	42.90	18300		55.0	50.2	66.10	9800
	38.0	46.8	41.00	17000		60.0	45.3	61.50	8600
	40.0	43.5	39.00	15900		65.0	40.0	55.90	7700
	45.0	34.1	32.50	13500		70.0	33.9	49.10	6900
						75.0	26.7	40.30	6200
						76.0	25.0	38.20	6100



**CK550 Lifting Capacity****LIFT CRANE SERVICE**

Refer to notes page 8.

No. of Counterweight : 2  
Position of Crawler : Extended

Boom Length (ft)	Load Radius (ft)	Boom Angle (degree)	Boom Point Elev. (ft)	360° Rated Load (lbs)	Boom Length (ft)	Load Radius (ft)	Boom Angle (degree)	Boom Point Elev. (ft)	360° Rated Load (lbs)
<b>90</b>	20.0	79.8	93.60	41900	<b>120</b>	25.0	79.9	123.20	29400
	21.0	79.1	93.40	38800		26.0	79.4	123.00	27800
	22.0	78.5	93.20	36100		27.0	78.9	122.80	26200
	23.0	77.8	93.00	33600		28.0	78.5	122.60	24900
	24.0	77.1	92.80	31700		29.0	78.0	122.40	23600
	25.0	76.5	92.50	29600		30.0	77.5	122.20	22500
	26.0	75.8	92.30	28200		32.0	76.5	121.70	20400
	27.0	75.2	92.00	26700		34.0	75.5	121.20	18700
	28.0	74.5	91.70	25300		36.0	74.5	120.60	17200
	29.0	73.8	91.40	24000		38.0	73.5	120.10	15900
	30.0	73.2	91.10	22900		40.0	72.5	119.40	14700
	32.0	71.8	90.50	20900		45.0	70.0	117.70	12400
	34.0	70.5	89.70	19100		50.0	67.4	115.70	10500
	36.0	69.1	89.00	17600		55.0	64.8	113.40	9100
	38.0	67.9	88.20	16300		60.0	62.1	110.90	7900
	40.0	66.4	87.30	15200		65.0	59.4	108.00	7000
	45.0	62.8	84.90	12800		70.0	56.6	104.90	6100
	50.0	59.2	82.00	11000		75.0	53.6	101.30	5400
	55.0	55.4	78.80	9600		80.0	50.6	97.40	4800
	60.0	51.4	75.00	8400		85.0	47.4	93.00	4300
	65.0	47.1	70.60	7500		90.0	44.0	88.00	3900
	70.0	42.6	65.40	6700		95.0	40.5	82.40	3500
	75.0	37.5	59.40	6000		100.0	36.6	76.10	3100
	80.0	31.9	52.00	5400		110.0	27.5	59.80	2500
	85.0	25.1	42.60	4900					
<b>100</b>	22.0	79.5	103.40	36000	<b>130</b>	27.0	79.8	133.00	26100
	23.0	79.0	103.20	33700		28.0	79.4	132.80	24700
	24.0	78.5	103.00	31600		29.0	78.9	132.60	23400
	25.0	77.9	102.80	29700		30.0	78.5	132.40	22300
	26.0	77.3	102.60	28100		32.0	77.6	132.00	20200
	27.0	76.7	102.30	26500		34.0	76.6	131.50	18500
	28.0	76.1	102.10	25200		36.0	75.7	131.00	17000
	29.0	75.5	101.80	23900		38.0	74.8	130.40	15700
	30.0	74.9	101.50	22800		40.0	73.9	129.90	14500
	32.0	73.7	101.00	20700		45.0	71.6	128.30	12200
	34.0	72.5	100.30	19000		50.0	69.2	126.50	10300
	36.0	71.3	99.70	17500		55.0	66.0	124.40	8900
	38.0	70.1	98.90	16200		60.0	64.4	122.10	7700
	40.0	68.9	98.20	15000		65.0	62.0	119.50	6700
	45.0	65.7	96.00	12700		70.0	59.4	116.70	5900
	50.0	62.6	93.50	10900		75.0	56.8	113.50	5200
	55.0	59.3	90.70	9400		80.0	54.1	110.00	4600
	60.0	55.8	87.50	8300		85.0	51.3	106.20	4100
	65.0	52.3	83.80	7300		90.0	48.4	101.90	3600
	70.0	48.5	79.60	6500		95.0	45.4	97.20	3200
	75.0	44.6	74.70	5800		100.0	42.2	91.90	2900
	80.0	40.3	69.20	5200		110.0	35.1	79.20	2300
	85.0	35.5	62.60	4700		120.0	26.3	62.10	1800
	90.0	30.2	54.70	4200					
<b>110</b>	24.0	79.5	113.20	31500	<b>140</b>	30.0	79.3	142.60	22200
	25.0	79.0	113.00	29600		32.0	78.5	142.20	20200
	26.0	78.5	112.80	27900		34.0	77.6	141.80	18500
	27.0	77.9	112.60	26400		36.0	76.8	141.30	17000
	28.0	77.4	112.40	25000		38.0	75.9	140.80	15700
	29.0	76.9	112.10	23800		40.0	75.1	140.30	14500
	30.0	76.3	111.90	22600		45.0	73.0	138.80	12100
	32.0	75.2	111.40	20600		50.0	70.8	137.10	10300
	34.0	74.2	110.60	18900		55.0	68.6	135.20	8800
	36.0	73.1	110.20	17400		60.0	66.4	133.10	7700
	38.0	72.0	109.50	16100		65.0	64.1	130.80	6700
	40.0	70.9	108.90	14900		70.0	61.8	128.20	5900
	45.0	68.1	106.90	12500		75.0	59.5	125.30	5200
	50.0	65.2	104.70	10700		80.0	57.1	122.20	4500
	55.0	62.3	102.20	9300		85.0	54.6	118.60	4000
	60.0	59.3	99.40	8100		90.0	52.0	115.00	3600
	65.0	56.2	96.20	7100		95.0	49.3	110.80	3100
	70.0	53.0	92.60	6300		100.0	46.6	106.30	2800
	75.0	49.7	88.50	5600		110.0	40.6	95.60	2200
	80.0	46.1	83.90	5000		120.0	33.8	82.30	1700
	85.0	42.4	78.70	4500		130.0	25.4	64.40	1300
	90.0	38.3	72.70	4100					
	95.0	33.8	65.70	3700					
	100.0	28.7	57.30	3300					





LIFT CRANE SERVICE

Refer to notes page 6.

No. of Counterweight : 2  
Position of Crawler : Extended

150

**CK550 Lifting Capacity****LIFT CRANE SERVICE**

Refer to notes page 6.

No. of Counterweight : 2  
Position of Crawler : Retracted

Boom Length (ft)	Load Radius (ft)	Boom Angle (degree)	Boom Point Elev. (ft)	360° Rated Load (lbs)	Boom Length (ft)	Load Radius (ft)	Boom Angle (degree)	Boom Point Elev. (ft)	360° Rated Load (lbs)
<b>30</b>	12.0	74.5	33.90	67600	<b>60</b>	15.0	79.4	64.00	46900
	13.0	72.5	33.60	59200		16.0	78.4	63.80	42500
	14.0	70.4	33.20	52700		17.0	77.5	63.60	38900
	15.0	68.4	32.80	47400		18.0	76.5	63.40	35800
	16.0	66.3	32.30	43100		19.0	75.5	63.10	33100
	17.0	64.1	31.80	39400		20.0	74.5	62.80	30800
	18.0	62.0	31.30	36300		21.0	73.5	62.50	28800
	19.0	59.7	30.70	33700		22.0	72.5	62.20	27000
	20.0	57.5	30.00	31400		23.0	71.5	61.90	25400
	21.0	55.1	29.30	29300		24.0	70.5	61.50	23900
	22.0	52.7	28.50	27500		25.0	69.5	61.10	22600
	23.0	50.2	27.70	25900		26.0	68.4	60.70	21400
	24.0	47.6	26.80	24500		27.0	67.4	60.30	20400
	25.0	44.9	25.80	23200		28.0	66.3	59.80	19400
	26.0	42.0	24.60	22000		29.0	65.3	59.40	18500
	27.0	39.0	23.40	21000		30.0	64.2	58.90	17700
	28.0	35.7	22.00	20000		32.0	62.1	57.80	16200
	29.0	32.1	20.40	19100		34.0	59.9	56.70	14900
	30.0	28.1	18.60	18300		36.0	57.6	55.40	13800
						38.0	55.3	54.10	12900
						40.0	52.9	52.60	12000
						45.0	46.6	48.20	10200
						50.0	39.5	42.70	8800
						55.0	31.0	35.40	7700
<b>40</b>	12.0	76.4	44.20	67300	<b>70</b>	17.0	79.3	73.80	38700
	13.0	77.0	44.00	59000		18.0	78.5	73.60	35600
	14.0	75.5	43.70	52400		19.0	77.6	73.40	32900
	15.0	74.0	43.40	47100		20.0	76.8	73.20	30600
	16.0	72.5	43.10	42800		21.0	75.9	72.90	28600
	17.0	71.0	42.70	39200		22.0	75.1	72.60	26800
	18.0	69.4	42.30	36100		23.0	74.2	72.40	25200
	19.0	67.9	41.90	33400		24.0	73.4	72.00	23700
	20.0	66.3	41.50	31100		25.0	72.5	71.70	22400
	21.0	64.7	41.00	29000		26.0	71.6	71.40	21300
	22.0	63.1	40.50	27200		27.0	70.8	71.00	20200
	23.0	61.5	39.90	25600		28.0	69.9	70.70	19200
	24.0	59.8	39.30	24200		29.0	69.0	70.30	18300
	25.0	58.1	38.70	22900		30.0	68.1	69.90	17500
	26.0	56.4	38.00	21700		32.0	66.4	69.00	16000
	27.0	54.6	37.30	20700		34.0	64.6	68.10	14700
	28.0	52.8	36.50	19700		36.0	62.7	67.00	13600
	29.0	51.0	35.70	18600		38.0	60.8	65.90	12700
	30.0	49.0	34.80	18000		40.0	58.9	64.70	11800
	32.0	45.0	32.90	16500		45.0	54.0	61.30	10000
	34.0	40.7	30.60	15300		50.0	48.7	57.20	8800
	36.0	36.0	28.00	14200		55.0	42.9	52.20	7500
	38.0	30.6	24.80	13200		60.0	36.4	46.00	6600
						65.0	28.6	38.00	5900
<b>50</b>	13.0	79.6	54.20	58900	<b>80</b>	18.0	79.9	83.80	35500
	14.0	78.4	54.00	52500		19.0	79.2	83.60	32800
	15.0	77.3	53.80	47100		20.0	78.4	83.40	30500
	16.0	76.1	53.50	42700		21.0	77.7	83.20	28400
	17.0	74.9	53.30	39100		22.0	77.0	82.90	26600
	18.0	73.7	53.00	36000		23.0	76.2	82.70	25000
	19.0	72.5	52.60	33300		24.0	75.5	82.40	23600
	20.0	71.3	52.30	31000		25.0	74.8	82.20	22300
	21.0	70.1	51.90	28900		26.0	74.0	81.90	21100
	22.0	68.8	51.50	27100		27.0	73.3	81.60	20000
	23.0	67.6	51.10	25500		28.0	72.5	81.20	19100
	24.0	66.3	50.70	24100		29.0	71.8	80.90	18200
	25.0	65.1	50.20	22800		30.0	71.0	80.60	17300
	26.0	63.8	49.70	21600		32.0	69.5	79.80	15800
	27.0	62.5	49.20	20600		34.0	67.9	79.00	14600
	28.0	61.2	48.60	19600		36.0	66.4	78.10	13500
	29.0	59.8	48.00	18700		38.0	64.8	77.20	12500
	30.0	58.5	47.40	17900		40.0	63.2	76.20	11600
	32.0	55.7	46.00	16400		45.0	59.1	73.40	9800
	34.0	52.9	44.50	15100		50.0	54.8	70.00	8500
	36.0	49.9	42.90	14000		55.0	50.2	66.10	7300
	38.0	46.8	41.00	13100		60.0	45.3	61.50	6400
	40.0	43.5	39.00	12200		65.0	40.0	55.90	5700
	45.0	34.1	32.50	10400		70.0	33.9	49.10	5100
						75.0	26.7	40.30	4500
						78.0	25.0	38.20	4400

**CK550 Lifting Capacity****LIFT CRANE SERVICE**

Refer to notes page 6.

No. of Counterweight : 2  
Position of Crawler : Retracted

Boom Length (ft)	Load Radius (ft)	Boom Angle (degree)	Boom Point Elev. (ft)	360° Rated Load (lbs)	Boom Length (ft)	Load Radius (ft)	Boom Angle (degree)	Boom Point Elev. (ft)	360° Rated Load (lbs)
<b>90</b>	20.0	79.8	93.80	30300	<b>120</b>	25.0	79.9	123.20	21700
	21.0	79.1	93.40	28300		26.0	79.4	123.00	20500
	22.0	78.5	93.20	26500		27.0	78.9	122.80	19400
	23.0	77.8	93.00	24800		28.0	78.5	122.60	18400
	24.0	77.1	92.80	23400		29.0	78.0	122.40	17500
	25.0	76.5	92.50	22100		30.0	77.5	122.20	16700
	26.0	75.8	92.30	20900		32.0	76.5	121.70	15200
	27.0	75.2	92.00	19900		34.0	75.5	121.20	13900
	28.0	74.5	91.70	18900		36.0	74.5	120.60	12800
	29.0	73.8	91.40	18000		38.0	73.5	120.10	11900
	30.0	73.2	91.10	17100		40.0	72.5	119.40	11000
	32.0	71.8	90.50	15700		45.0	70.0	117.70	9200
	34.0	70.5	89.70	14400		50.0	67.4	115.70	7800
	36.0	69.1	89.00	13300		55.0	64.8	113.40	6700
	38.0	67.8	88.20	12300		60.0	62.1	110.90	5800
	40.0	66.4	87.30	11400		65.0	59.4	108.00	5000
	45.0	62.8	84.90	9700		70.0	56.6	104.90	4400
	50.0	59.2	82.00	8300		75.0	53.6	101.30	3800
	55.0	55.4	78.80	7200		80.0	50.6	97.40	3300
	60.0	51.4	75.00	6200		85.0	47.4	93.00	2900
	65.0	47.1	70.80	5500		90.0	44.0	88.00	2500
<b>100</b>	70.0	42.6	65.40	4900	<b>130</b>	95.0	40.5	82.40	2200
	75.0	37.6	59.40	4300		100.0	36.6	76.10	1900
	80.0	31.9	52.00	3900		110.0	27.5	59.80	1500
	85.0	25.1	42.60	3500					
	22.0	79.6	103.40	26200		27.0	79.8	133.00	19200
	23.0	79.0	103.20	24600		28.0	79.4	132.80	18200
	24.0	78.5	103.00	23200		29.0	78.9	132.60	17300
	25.0	77.9	102.80	21900		30.0	78.5	132.40	16500
	26.0	77.3	102.60	20700		32.0	77.6	132.00	15000
	27.0	76.7	102.30	19600		34.0	76.6	131.50	13700
	28.0	76.1	102.10	18700		36.0	75.7	131.00	12600
	29.0	75.5	101.80	17800		38.0	74.8	130.40	11600
	30.0	74.9	101.50	16900		40.0	73.9	129.90	10800
	32.0	73.7	101.00	15400		45.0	71.6	128.30	9000
	34.0	72.5	100.30	14200		50.0	69.2	126.50	7600
	36.0	71.3	99.70	13100		55.0	66.9	124.40	6500
	38.0	70.1	98.90	12100		60.0	64.4	122.10	5500
	40.0	68.9	98.20	11200		65.0	62.0	119.50	4800
	45.0	65.7	96.00	9400		70.0	59.4	116.70	4100
	50.0	62.6	93.50	8000		75.0	56.6	113.50	3600
	55.0	59.3	90.70	6900		80.0	54.1	110.00	3100
<b>110</b>	60.0	55.8	87.50	6000		85.0	51.3	106.20	2700
	65.0	52.3	83.80	5300		90.0	48.4	101.90	2300
	70.0	48.5	79.60	4600		95.0	45.4	97.20	2000
	75.0	44.6	74.70	4100		100.0	42.2	91.90	1700
	80.0	40.3	69.20	3600		110.0	35.1	79.20	1200
	85.0	36.5	62.60	3200		120.0	26.3	62.10	800
	90.0	30.2	54.70	2800					
	24.0	79.5	113.20	23100					
	25.0	79.0	113.00	21800					
	26.0	78.5	112.80	20700					
	27.0	77.9	112.60	19600					
	28.0	77.4	112.40	18600					
	29.0	76.9	112.10	17700					
	30.0	76.3	111.90	16900					
	32.0	75.2	111.40	15400					
	34.0	74.2	110.80	14100					
	36.0	73.1	110.20	13000					
	38.0	72.0	109.50	12000					
	40.0	70.9	108.90	11200					
	45.0	68.1	106.90	9400					
	50.0	65.2	104.70	8000					
	55.0	62.3	102.20	6900					
	60.0	59.3	99.40	5900					
	65.0	56.2	96.20	5200					
	70.0	53.0	92.60	4500					
	75.0	49.7	88.50	4000					
	80.0	46.1	83.90	3500					
	85.0	42.4	78.70	3100					
	90.0	38.3	72.70	2700					
	95.0	33.8	65.70	2400					
	100.0	28.7	57.30	2100					



CK550 Jib Lifting Capacity											LIFT CRANE SERVICE Refer to notes page 6											
Load Radius (ft)	90' Boom										Load Radius (ft)	120' Boom										
	20' Jib		30' Jib		40' Jib		50' Jib		60' Jib			20' Jib		30' Jib		40' Jib		50' Jib		60' Jib		
	Offset Angle		Offset Angle		Offset Angle		Offset Angle		Offset Angle			Offset Angle		Offset Angle		Offset Angle		Offset Angle		Offset Angle		
	10°	30°	10°	30°	10°	30°	10°	30°	10°	30°		10°	30°	10°	30°	10°	30°	10°	30°	10°	30°	
30	11000										30											
32	11000										32											
34	11000		11000								34	11000										
36	11000		11000								36	11000										
38	11000	9900	11000			9000					38	11000										
40	11000	9900	11000			9000		7000			40	11000	9900	11000								
45	11000	9900	11000			9000		6900			45	11000	9900	11000								
50	11000	9900	11000	9000	8900		6700		4800		50	11000	9900	11000	8000	9000		6900				
55	10800	9900	10900	9000	8700	7100	6500	5000	4800		55	10700	9900	10700	9000	9900		6900		4800		
60	10200	9800	10500	9000	8600	7100	6400	5000	4600	3400	60	9700	9700	10000	9000	8800	7100	6600	5000	4800		
65	9000	8100	9300	9000	8300	7100	6200	5000	4400	3400	65	8400	8700	9000	9000	8800	7100	6400	5000	4800		
70	7900	8200	8200	8400	8100	7100	6000	5000	4300	3400	70	7200	7700	7700	8100	7900	7100	6300	5000	4500	3400	
75	7000	7200	7300	7600	7500	7100	5900	5000	4100	3400	75	6400	6900	6900	7200	7000	6900	6000	5000	4300	3400	
80	6200	6400	6500	6800	6800	6900	5800	5000	3900	3400	80	5800	6000	6000	6300	6200	6500	5800	5000	4200	3400	
85	5500	5800	5800	6100	6100	6300	5600	5000	3800	3400	85	4900	5100	5200	5500	5400	5800	5600	5000	4100	3400	
90	5000	5100	5200	5400	5500	5700	5500	5000	3700	3400	90	4200	4400	4500	4900	4800	5000	4900	5000	3900	3400	
95	4400	4400	4600	4800	4900	5100	5100	5000	3600	3400	95	3600	3800	3900	4300	4100	4400	4200	4800	3800	3400	
100			4100	4200	4300	4600	4400	4900	3500	3300	100	3000	3200	3400	3700	3600	3800	3700	4300	3700	3300	
110					3400	3600	3500	3900	3300	3200	110	2100	2200	2400	2600	2700	2800	3200	3000	3000	3200	
120											120											
Load Radius (ft)	100' Boom										Load Radius (ft)	130' Boom										
	20' Jib		30' Jib		40' Jib		50' Jib		60' Jib			20' Jib		30' Jib		40' Jib		50' Jib		60' Jib		
	Offset Angle		Offset Angle		Offset Angle		Offset Angle		Offset Angle			Offset Angle		Offset Angle		Offset Angle		Offset Angle		Offset Angle		
	10°	30°	10°	30°	10°	30°	10°	30°	10°	30°		10°	30°	10°	30°	10°	30°	10°	30°	10°	30°	
30	11000										30											
32	11000										32											
34	11000										34											
36	11000										36											
38	11000	9900	11000								38	11000										
40	11000	9900	11000			9000		7000			40	11000		11000								
45	11000	9900	11000			9000		7000			45	11000		11000								
50	11000	9900	11000	9000	9000		6900		4900		50	11000	9900	11000		9000		7000				
55	10700	9900	10900	9000	9000	7100	6700		4800		55	10600	9900	10700	9000	9000		7000		4800		
60	10000	9800	10300	9000	8800	7100	6600	5000	4600	3400	60	9500	9700	9900	9000	9000	7100	6600	5000	4800		
65	8700	8900	9100	9000	8800	7100	6400	5000	4400	3400	65	8200	8500	8500	8800	8700	7100	6600	5000	4700		
70	7700	7900	8000	8300	8100	7100	6200	5000	4300	3400	70	7100	7500	7500	7900	7700	7100	6500	5000	4500	3400	
75	6800	7000	7100	7500	7400	7100	6100	5000	4200	3400	75	6200	6500	6500	7000	6700	7000	6400	5000	4300	3400	
80	6000	6200	6300	6600	6500	6900	5900	5000	4100	3400	80	5300	5600	5600	6200	5900	6600	6000	5000	4300	3400	
85	5200	5400	5500	5900	5800	6200	5700	5000	4000	3400	85	4600	4900	4900	5500	5100	5800	5300	5000	4200	3400	
90	4600	4700	4800	5200	5200	5500	5400	5000	3900	3400	90	3900	4200	4200	4800	4400	5000	4600	5000	4500	3400	
95	4000	4100	4400	4800	4800	4900	4800	4900	3700	3400	95	3300	3500	3600	4000	3800	4400	4000	4700	3800	3400	
100	3500	3600	3800	4000	4000	4400	4200	4600	3500	3300	100	2800	2900	3000	3400	3200	3800	3500	4100	3700	3400	
110			2900	3000	3100	3400	3300	3600	3300	3200	110	1900	2000	2100	2400	2300	2700	2500	3000	2700	3300	
120											120											
Load Radius (ft)	110' Boom										Load Radius (ft)											
	20' Jib		30' Jib		40' Jib		50' Jib		60' Jib													
	Offset Angle		Offset Angle		Offset Angle		Offset Angle		Offset Angle													
	10°	30°	10°	30°	10°	30°	10°	30°	10°	30°												
30											30											
32											32											
34	11000										34	11000										
36	11000										36	11000										
38	11000		11000								38	11000										
40	11000	9900	11000			9000					40	11000	9900	11000								
45	11000	9900	11000			9000					45	11000	9900	11000								
50	11000	9900	11000	9000	9000		6900		4900		50	11000	9900	11000	9000							
55	10700	9900	10900	9000	8900	7100	6700		4800		55	10600	9900	10700	9000	9000						
60	9900	9700	10100	9000	8800	7100	6600	5000	4600		60	9500	9700	9900	9000	9000	7100	6600	5000	4800		
65	8600	8900	9000	9000	8600	7100	6400	5000	4500		65	8200	8500	8500	8800	8700	7100	6600	5000	4700		
70	7600	7800	7900	8200	8000	7100	6200	5000	4500	3400	70	7100	7500	7500	7900	7700	7100	6500	5000	4500	3400	
75	6700	6900	7000	7300	7200	7100	6100	5000	4300	3400	75	6200	6500	6500	7000	6700	7000	6400	5000	4300	3400	
80	5800	6100	6200	6500	6300	6900	6100	5000	4100	3400	80	5300	5600	5600	6200	5900	6600	6000	5000	4300	3400	
85	5100	5300	5400	5800	5700	6100	5800	5000	4000	3400	85	4600	4900	4900	5500	5100	5800	5300	5000	4200	3400	
90	4400	4600	4800	5100	5000	5400	5200	5000	4000	3400	90	3900	4200	4200	4800	4400	5000	4600	5000	4500	3400	
95	3800	4000	4100	4500	4400	4800	4600	4900	3900	3400	95	3300	350									





# Clamshell



## Boom

Welded lattice construction using tubular, high tensile steel chords with pin connections between sections.

Basic boom length..... 30 ft (9.14 m)

Max. boom length..... 60 ft (18.29 m)

Open throat with offset boom point sheaves on antifriction bearing, bottom diameter..... 1'4" (0.4 m)

Limit on clamshell bucket weight . 4,600 lb (2,100 kg)

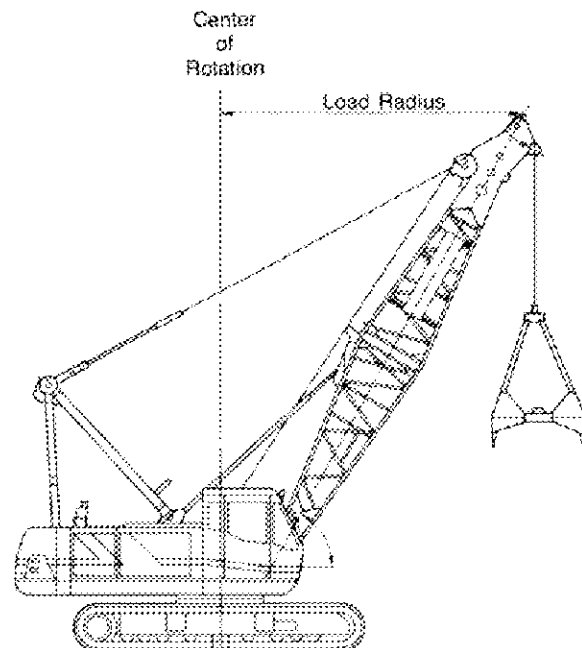
Optional tagline: Hydraulic operated type and spring type.

## Boom Component Chart

Boom length	ft (m)	Boom arrangement
40	(12.19)	Base-A-Tip
50	(15.24)	Base-B-Tip
60	(18.29)	Base-A-B-Tip

Base=15 ft (4.57 m) Tip=15 ft (4.57 m)

Inserts: A=10 ft (3.05 m); B=20 ft (6.10 m)



## Rated Load

1. No. of Counterweight: 2
2. Position of Crawlers: Extended

Boom Length (ft)	Load Radius (ft)	Boom Angle (°)	Rated Load (lb)	Boom Length (ft)	Load Radius (ft)	Boom Angle (°)	Rated Load (lb)
30	18.0	62.0	15500	50	26.0	63.6	15500
	20.0	57.5	15500		28.0	61.2	15500
	22.0	52.7	15500		30.0	58.5	15500
	24.0	47.6	15500		32.0	55.7	15500
	26.0	42.0	15500		34.0	52.9	15500
	28.0	35.7	15500		36.0	49.9	15500
40	22.0	63.1	15500	60	38.0	46.8	15300
	24.0	59.8	15500		40.0	43.5	14310
	26.0	56.4	15500		30.0	64.2	15500
	28.0	52.8	15500		32.0	62.1	15500
	30.0	49.0	15500		34.0	59.9	15500
	32.0	45.0	15500		36.0	57.6	15500
	34.0	40.7	15500		38.0	55.3	15120
	36.0	36.0	15500		40.0	52.9	14130
					45.0	46.6	12060
					50.0	39.5	10440

### Notes

1. Figures represent maximum allowable capacity, and assume level, firm ground and ideal working conditions.
2. Capacities are calculated at 67.5% of the minimum clamshell tipping load.
3. Capacities are the maximum recommended by PCSA Standard #4. Allowances must be made by the user for such unfavorable conditions as a soft or uneven supporting surface, rapid cycle operations, or bucket suction.
4. The combined weight of the bucket and load must not exceed these capacities.
5. Do not operate the clamshell using boom angles of less than 30 degree.
6. Boom length for clamshell operation should not exceed 60' (18.29 m).
7. Consult your authorized distributor for rated loads during rapid cycle operations.





# Dragline



## Boom

Welded lattice construction using tubular, high tensile steel chords with pin connections between sections.

Basic boom length..... 30 ft (9.14 m)

Max. boom length..... 60 ft (18.29 m)

Open throat with offset boom point sheaves on antifriction bearing, bottom diameter..... 1'4" (0.4 m)

Limit on clamshell bucket weight : 4,600 lb (2,100 kg)

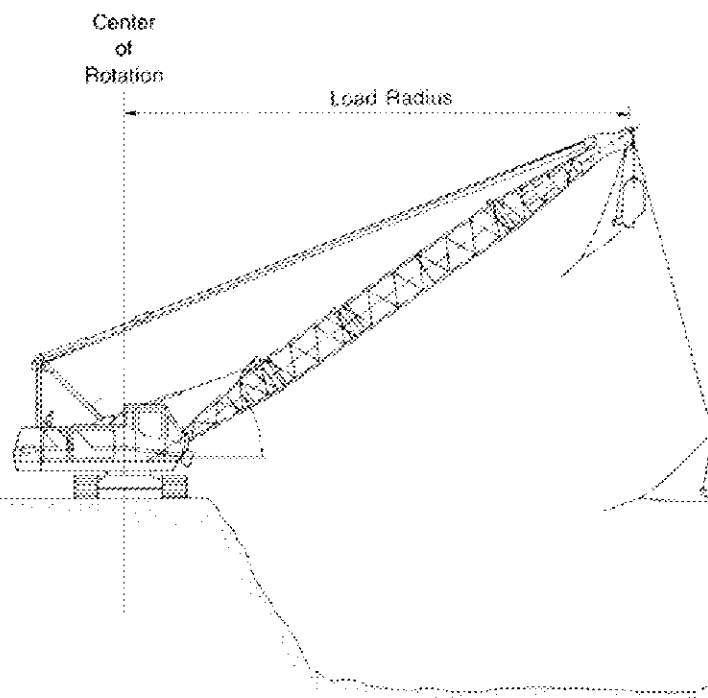
Optional tagline: Hydraulic operated type and spring type.

## Boom Component Chart

Boom length	ft (m)	Boom arrangement
40	(12.19)	Base-A-Tip
50	(15.24)	Base-B-Tip
60	(18.29)	Base-A-B-Tip

Base=15 ft (4.57 m) Tip=15 ft (4.57 m)

Inserts: A=10 ft (3.05 m), B=20 ft (6.10 m)



## Rated Load

1. No. of Counterweight: 2
2. Position of Crawler: Extended

Boom Length (ft)	Load Radius (ft)	Boom Angle (°)	Rated Load (lb)	Boom Length (ft)	Load Radius (ft)	Boom Angle (°)	Rated Load (lb)
30	26.0	43.5	15500	50	40.0	44.3	15500
	27.0	40.6	15500		42.0	40.9	14900
	28.0	37.5	15500		44.0	37.3	14000
	29.0	34.2	15500		46.0	33.2	13200
	30.0	30.5	15500				
40	34.0	41.9	15500	60	48.0	43.1	12300
	36.0	37.3	15500		50.0	40.3	11600
	38.0	32.3	15500		52.0	37.2	11000
					54.0	33.9	10500
					56.0	30.9	10000

### Notes

1. Figures represent maximum allowable capacity, and assume level, firm ground and ideal working conditions.
2. Capacities are calculated at 675% of the minimum dragline tipping load.
3. Capacities are the maximum recommended by PCSA Standard #4. Allowances must be made by the user for such unfavorable conditions as a soft or uneven supporting surface, rapid cycle operations, or bucket suction.
4. The combined weight of the bucket and load must not exceed these capacities.
5. Do not operate the dragline using boom angles of less than 30 degree.
6. Boom length for dragline operation should not exceed 60' (18.29 m).
7. Consult your authorized distributor for rated loads during rapid cycle operations.



## Features

### Overall Features

- Mechatronic ESS makes full use of engine power and prevents stalls.
- Advanced hydraulic system provides exact and stable hydraulic flow to all functions for excellent productivity.
- Ample power and stability to accommodate vibratory hammer attachments.
- Available line pull of 35,300 lbs. makes sheet pile removal easy and quick.
- Sleek, rounded styling is enhanced by a full complement of operator amenities.
- Various anti-noise measures keep onsite noise levels down to a mere 60 dB (A)/100 ft.
- Small tail swing radius and compact overall dimensions provide efficient operation in tight spaces.
- High counterweight ground clearance assures unobstructed swing.
- Low-profile rear guard improves lateral and rear visibility.

### Upper Machinery

- Uniform large-capacity drums make clamshell work much easier.
- Powerful brake drum with heat-radiating fins ensures safe, jerk-free performance during continuous operation.
- Independent swing pump provides powerful and fast swing during simultaneous attachment operation.
- Well-balanced, quick swing response ensured by a direct, spool-controlled swing circuit.
- Standard auxiliary hydraulic power source can be used with optional third drum for auger, drill, or vibratory hammer.
- Rubber-cushioned boom backstop reduces noise and vibration during vibratory hammer operation.
- Self-removable counterweight makes disassembly possible without using external equipment.
- Tough frame construction has proven durable enough to withstand one million load tests.

### Lower Machinery

- Low center of gravity keeps the machine stable when lifting over the side.
- Heavy-duty track links assure steady, sure-footed travel.
- Smooth, powerful crawler extension and retraction mechanism features a semi-automatic lock.
- Straight-propel travel system keeps the machine on track during simultaneous attachment or swing operation.
- Travel motors are mounted within the shoe width to protect them from shocks and debris.

### Cab and Controls

- SensaTouch Control with hydraulic pilot system allows the operator to feel the movement of the load through the control lever.
- SensaTouch Control provides direct, sensitive control of the swing for exact positioning.
- An ultra slow-speed changeover device makes inching control easy and precise for hook work, boom hoist, and travel.
- Electric throttle on the swing lever provides light, accurate engine control.
- Excellent upward visibility provided by a pop-up skylight and a sliding upper front window that can be stored in the cab ceiling.
- Downward field of vision kept clear by a removable lower front window.
- Tinted glass windows and snug-fitting cab door keep the cab interior comfortable and quiet.
- Cloth-covered, tilt-adjustable seat helps the operator maintain a comfortable and relaxed posture.

### Attachment

- Fast hook and boom hoisting speeds ensure reduced cycle times on construction projects.
- Spreader features automatic storage and allows boom and guy cables to be connected easily.
- Optional auxiliary sheave features simplified cable reeving.
- Double-tapered boom pins can be inserted and removed safely and efficiently without standing under the base boom.
- Long-tapered guy cable pin and lightweight connectors facilitate assembly.

### Maintenance and Safety

- Electronic monitor continuously checks 17 machine functions and alerts the operator of potential problems.
- Swing flashers and rear light alert onsite workers of the machine's next move for improved safety.
- Lever lock system helps prevent accidental operation when the operator enters or leaves the cab.
- Free-fall interlock eliminates accidental activation of free-fall.
- Optional hoist load moment indicator helps to keep operation within safe limits at all times.
- Slip-proof steps and center guards provided as standard equipment on the lower frame.
- Large toolbox, grease gun holder, and hydraulic check port provided as standard equipment.

**NOTE:** Due to our policy of continual product improvement, all designs and specifications are subject to change without advance notice.



**KOBE STEEL, LTD.**

**CONSTRUCTION MACHINERY DIVISION**

27-8, Jingumae 6-chome, Shibuya-ku, TOKYO, 150 Japan  
Tel: (03) 797-7021/Fax: (03) 797-7072



**KOBELCO AMERICA INC.**

10515 Harwin Drive, Suite 139A, Houston, Texas 77036, U.S.A.  
Tel: (713) 981-4050 / Fax: (713) 981-0150