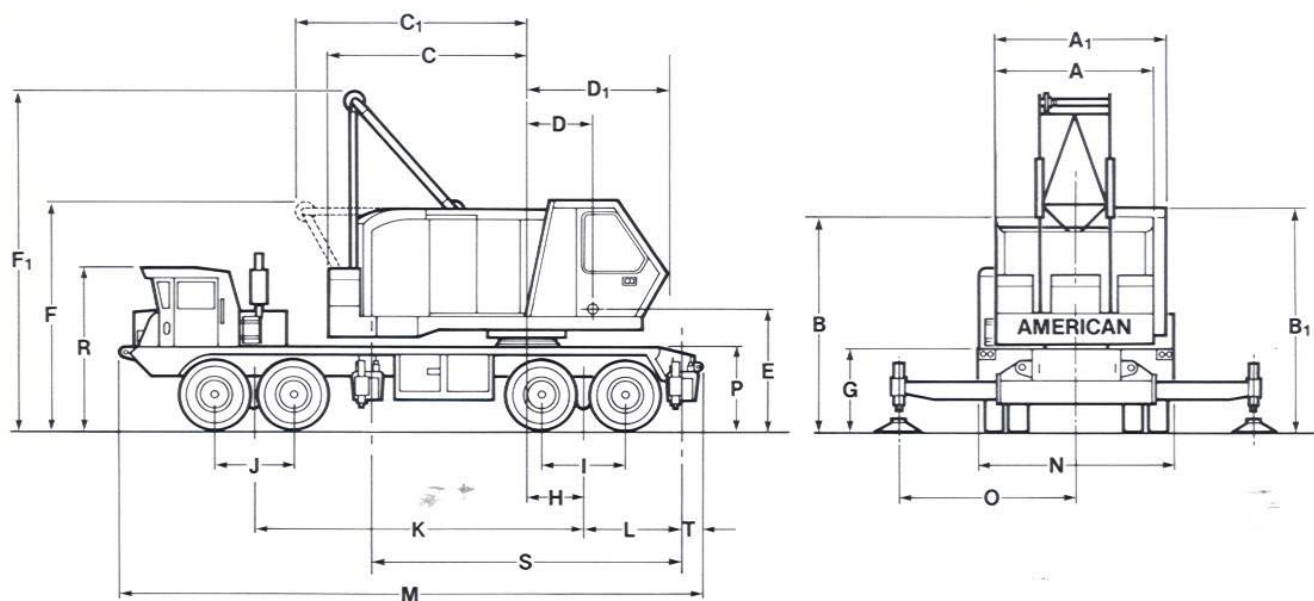




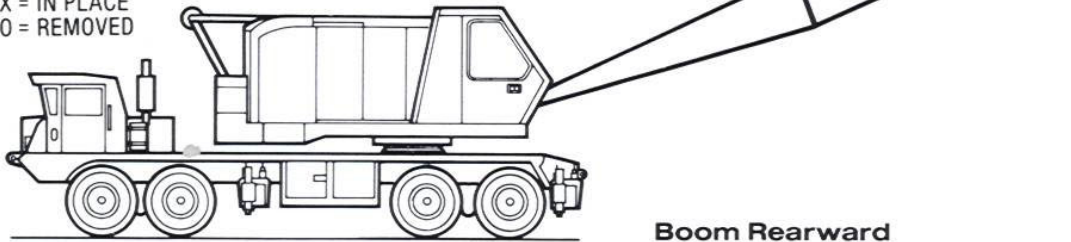
5530 CARRIER SPECIFICATIONS



GENERAL DIMENSIONS

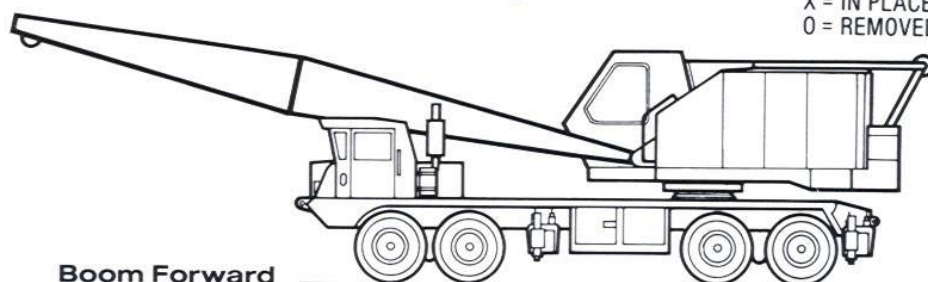
	Fl.	M		Fl.	M
A. Width of cab	9'0"	2.74 m	K. Centerline of rear bogie to		
A ₁ . Width of cab plus operators cab	10'0"	3.05 m	centerline of front bogie	18'9"	5.72 m
B. Height to Top of Machinery Cab	11'11½"	3.66 m	L. Centerline of rear bogie to		
B ₁ . Height to top of operator's cab	12'1"	3.68 m	centerline of rear outrigger	5'6½"	1.69 m
C. Tailswing	12'1"	3.68 m	M. Overall length	32'9½"	9.99 m
C ₁ . Tailswing with A-frame lowered	13'8½"	4.18 m	N. Overall width	11'0"	3.35 m
D. Centerline of rotation to			O. Outriggers extended w/screw jacks	10'0"	3.05 m
centerline of boom foot	3'8"	1.12 m	O ₁ . Outriggers extended w/hydraulic		
D ₁ . Centerline of rotation to front			outriggers	9'6"	2.90 m
of cab	7'10"	2.39 m	P. Height over mounting plate	4'4½"	1.33 m
E. Ground to centerline boom foot	6'5½"	1.97 m	R. Height over carrier cab	8'10"	2.69 m
F. Height over A-Frame (lowered)	12'4½"	3.77 m	S. Centerline of rear outrigger to		
F ₁ . Height over A-Frame (raised)	19'1½"	5.83 m	centerline of front outrigger	18'0½"	5.50 m
G. Ground to bottom of counterweight	4'7"	1.40 m	T. Center of rear outrigger to		
H. Centerline of rotation to			rear of carrier	1'0"	.3 m
centerline of rear bogie	3'6"	1.07 m	Outside turning radius (over bumper)	56'	17.07 m
I. Distance between rear axles	4'10"	1.47 m	Clearance (under rear equalizing beam)	11"	.28 m
J. Distance between front axles	4'6"	1.37 m	Clearance (under rear differential)	14"	.36 m

FORM NO. 5530-TCC-8

**5530 TRAVELING WEIGHTS****IN POUNDS (KILOGRAMS)**X = IN PLACE
O = REMOVED**Boom Rearward**

Block	Outer Boom	Inner Boom	Counterwt.	Front Outrigger	Rear Outrigger	Front Tandem		Rear Tandem		Gross Weights	
						Lbs.	Kgs.	Lbs.	Kgs.	Lbs.	Kgs.
X	X	X	X	X	X	45570	20670.6	68080	30881.1	113650	51551.6
X	X	X	O	X	X	25670	11643.9	61480	27887.3	87150	39531.2
X	X	X	O	O	X	22370	10147.0	59830	27138.9	82200	37285.9
X	X	X	O	X	O	27130	12306.2	55070	24979.8	82200	37285.9
X	X	X	O	O	O	23830	10809.3	53420	24231.3	77250	35040.6
O	X	X	X	X	X	48350	21931.6	64000	29030.4	112350	50962.0
O	X	X	O	X	X	28450	12904.9	57400	26036.6	85850	38941.6
O	X	X	O	O	X	25150	11408.0	55750	25288.2	80900	36696.2
O	X	X	O	X	O	29910	13567.2	50990	23129.1	80900	36696.2
O	X	X	O	O	O	26610	12070.3	49340	22380.6	75950	34450.9
O	O	X	X	X	X	50590	22947.6	59950	27193.3	110540	50140.9
O	O	X	O	X	X	30690	13920.9	53350	24199.6	84040	38120.5
O	O	X	O	O	X	27390	12424.1	51700	23451.1	79090	35875.2
O	O	X	O	X	O	32160	14587.8	46940	21292.0	79100	35879.8
O	O	X	O	O	O	28860	13090.9	45290	20543.5	74150	33634.4
O	O	O	X	X	X	51540	23378.5	57060	25882.4	108600	49261.0
O	O	O	O	X	X	31640	14351.9	50460	22888.7	82100	37240.6
O	O	O	O	O	X	28340	12855.0	48810	22140.2	77150	34995.2
O	O	O	O	X	O	33100	15014.2	44040	19976.5	77140	34990.7
O	O	O	O	O	O	29800	13517.3	42390	19228.1	72190	32745.4
Carrier with bullgear and outriggers — less upper						19860	9008.5	29120	13208.8	48800	22135.7

NOTE: Because of variable manufacturing tolerances a variance of $\pm 3\%$ should be allowed on the above weights.

**5530 TRAVELING WEIGHTS****IN POUNDS (KILOGRAMS)**X = IN PLACE
O = REMOVED**Boom Forward**

Block	Outer Boom	Inner Boom	Counterwt.	Front Outrigger	Rear Outrigger	Front Tandem		Rear Tandem		Gross Weights	
						Lbs.	Kgs.	Lbs.	Kgs.	Lbs.	Kgs.
X	X	X	X	X	X	18000	8164.8	95650	43386.8	113650	51551.6
X	X	X	O	X	X	28000	12700.8	59140	26825.9	87140	39526.7
X	X	X	O	O	X	24700	11203.9	57490	26077.5	82190	37281.4
X	X	X	O	X	O	29470	13367.6	52730	23918.3	82200	37285.9
X	X	X	O	O	O	26170	11870.7	51080	23170.0	77250	35040.6
O	X	X	X	X	X	14730	6681.5	97610	44275.9	112340	50957.4
O	X	X	O	X	X	24740	11222.1	61110	27719.5	85850	38941.6
O	X	X	O	O	X	21440	9725.2	59460	26971.1	80900	36696.2
O	X	X	O	X	O	26200	11884.3	54690	24807.4	80890	36691.7
O	X	X	O	O	O	22900	10387.4	53040	24058.9	75940	34446.4
O	O	X	X	X	X	11810	5357.0	98730	44783.9	110540	50140.9
O	O	X	O	X	X	21820	9897.6	62230	28227.5	84050	38125.1
O	O	X	O	O	X	18520	8400.7	60580	27479.1	79100	35879.8
O	O	X	O	X	O	23280	10559.8	55810	25315.4	79090	35875.2
O	O	X	O	O	O	19980	9062.9	54160	24567.0	74140	33629.9
O	O	O	X	X	X	10140	4599.5	98460	44661.5	108600	49260.9
O	O	O	O	X	X	20150	9140.0	61950	28100.5	82100	37240.6
O	O	O	O	O	X	16850	7643.2	60300	27352.1	77150	34995.2
O	O	O	O	X	O	21610	9802.3	55540	25192.9	77150	34995.2
O	O	O	O	O	O	18310	8305.4	53890	24444.5	72200	32749.9
Carrier with bullgear — less upper and outriggers						17900	8119.4	21000	9525.6	38900	17645.0

NOTE: Because of variable manufacturing tolerances a variance of $\pm 3\%$ should be allowed on the above weights.



5530 CARRIER SPECIFICATIONS

Specifications for AMERICAN MODEL 5530, 75 ton, 225" (5715 mm) wheelbase, 8 x 4 carrier.

FRAME: Box welded frame members designed and manufactured to provide adequate support for crane weight and capacities. High strength alloy steel used throughout the construction of the carrier. Tow bars are provided front and rear, full length fenders, locked side mounted storage box and float storage racks.

HYDRAULIC OUTRIGGERS: Two independent housings fabricated from "T-1" steel, or equivalent, outrigger beams with horizontal hydraulic movement, automatic check and manual shut-off valves in hydraulic jacks to assure maximum safety for all lifts, hardened chrome plated rams, fitted with 36" (914.4 mm) dia. T-1 steel floats, pin connected and removable. Roller mounted sliding beams with screw jacks are optional.

STANDARD ENGINE: General Motors 6-71N diesel, 6 cylinder, 4 1/4" (107.9 mm) bore x 5" (127 mm) stroke, 426 cu. in. (6982 cm³) displacement, rated 238 HP @ 2100 RPM. Thermostatically controlled radiator shutters.

OPTIONAL ENGINES: Cummins NTC-230 diesel engine, 6 cylinder, 5 1/2" (139.7 mm) bore x 6" (152.4 mm) stroke, 885 cu. in. (14013 cm³) displacement, rated 230 HP @ 2100 RPM. Thermostatically controlled radiator shutters.

Cummins Model NTC-350 turbocharged diesel engine, 6 cylinder, 5 1/2" (139.7 mm) bore x 6" (152.4 mm) stroke, 855 cu. in. (14,013 cm³) displacement, rated 350 HP @ 2100 RPM.

General Motors Model 6V-92TAC diesel engine, 6 cylinder, 4.84" (122.9 mm) bore x 5" (127 mm) stroke, 552 cu. in. (9046 cm³) displacement, rated 325 HP @ 2100 RPM.

FUEL TANK: One 60 (U.S.) gallon (227 L) fuel tank.

ELECTRICAL: Standard engine — 12 volt system, 500 watt alternator, 2-12 volt batteries in parallel.

POWER STEERING: Garrison Twin-ram hydraulic power steering with Ross cam, 20" (508 mm) dia. steering wheel.

CLUTCH: Spicer 14" (355 mm) 2 place pull type clutch, hydraulically actuated.

MAIN TRANSMISSION: Eaton Model T11605B, five speeds forward, and one reverse. Ratios:

First	6.35:1
Second	3.75:1
Third	2.04:1
Fourth	1.16:1
Fifth	1.00:7
Reverse	6.48:1

AUXILIARY TRANSMISSION: Spicer 7041 four speed.

Ratios:	First	2.31:1
	Second	1.21:1
	Third	1.00:1
	Fourth	0.83:1

FRONT AXLES: Eaton EFA-22T2 in tandem.

REAR AXLES: Clark planetary BD-57000 tandem assembly, non-spin differential on leading axle; ratio 8.667:1.

SUSPENSION: Hendrickson solid mount with rubber bushed torque rods front and rear.

PROPEL SHAFT: Mechanics needle bearing.

SERVICE BRAKES: Air on all wheels with 14.5 c.f.m. (6844 cu. cms/sec.) compressor and two reservoirs, lining area 16 1/2" (419 mm) x 7" (177.8 mm) (826 sq. in.) (5329 cm²) rear; 17 1/2" (444.5 mm) x 4" (101.6 mm) (495 sq. in.) (3194 cm²) front; 1321 sq. in. (8523 cm²) total lining area.

EMERGENCY BRAKES: Spring set, air release system on both rear axles with operator's control on dash panel, and one reserve air reservoir for release of spring set chambers.

WHEELS: Cast spoke front; rear integrally cast with axles. 10:00 x 20 rims.

TIRES: 14:00 x 20, 18-PR non-directional mud and snow.

CAB: One man cab, 32" (813 mm) wide, fully enclosed, offset to left side, removable panel for engine access, boom guide, Seats Inc. driver's seat.

STANDARD EQUIPMENT: West Coast type mirrors, air windshield wiper, windshield washer, heater, defroster, sealed beam oval headlights, front and rear directional signals, combination stop and tail lights, back up lights, clearance lights on top and side of cab, electric and air horn, dome light, indirect lighted instrument panel, speedometer, ammeter, fuel gauge, engine temperature indicator, air pressure gauge, oil pressure gauge, low air pressure warning signal, and tachometer.

TOOLS: Air valve and tire inflation kit, wheel wrench and bar, axle bearing wrench.

OPTIONAL ACCESSORIES: Front outrigger, back up alarm, remote control of carrier from crane upper, hydraulic ctwt. removal attachment, Roadranger transmission, Jacobs engine brake, cold weather starting aid, Michelin tires, spare tire and rim (unmounted), raised outrigger jack mounting for increased clearance under floats.

PERFORMANCE:

Maximum governed speed (High-high) . 42 MPH (67.6 KPH)
Minimum governed speed (Low-low) . 1.17 MPH (1.88 KPH)
Maximum gradeability based on wheel slip 30%

NOTE: In accordance with varying material situations and the Company's policy of constant product improvement these specifications subject to change without notice and without incurring responsibility to units previously sold.

J&B911

Form No. 5530-TCC-8

PRINTED IN U.S.A.

SOLD & SERVICED BY:



AMERICAN CRANE CORPORATION
202 Raleigh Street
Wilmington, North Carolina 28403

AN EQUAL OPPORTUNITY EMPLOYER



The ratings in this chart are for planning purposes only. Only those ratings specifically assigned to a crane and mounted in the Operator's Cab or in the Operator's Manual should be used for actual operation.

500 SERIES MODEL 5530 TRUCK CRANE

LIFT RATINGS IN POUNDS

With 47H Tubular Chord Lattice Boom and "P-P" Counterweight (26,500 lb)

Boom Length	Radius In Feet	Boom Angle Degrees	Free Ratings		Outriggers Extended & Set		Feet From Boom Point
			Over Side	Over Rear	Over Front* Or Side	Over Rear	
40 feet	11	80.5	0	101520	150000	150000	46
	12	79.0	0	89300	150000	150000	46
	15	74.6	0	65450	135320	135320	45
	20	67.0	0	44970	101470	101470	43
	25	58.8	30040	34080	71240	76920	41
	30	49.9	23850	27290	53380	58100	37
	35	39.5	19640	22620	42500	46500	32
	40	25.8	16640	19260	35220	38680	24
50 feet	13	80.1	0	79500	150000	150000	56
	15	77.7	0	65280	135210	135210	55
	20	71.8	38130	44790	101380	101380	54
	25	65.6	29890	33930	71220	76880	52
	30	59.1	23710	27130	53330	58040	49
	35	52.0	19490	22460	42410	46410	46
	40	44.2	16500	19120	35130	38590	41
	50	22.9	12400	14510	25900	28610	26
60 feet	14	80.8	0	71480	144720	144720	66
	15	79.8	0	65090	135110	135110	66
	20	74.9	37780	44590	101290	101290	64
	25	69.9	29730	33750	71160	76810	63
	30	64.7	23550	26960	53240	57940	61
	35	59.2	19320	22280	42310	46300	58
	40	53.4	16340	18950	35030	38480	55
	50	40.1	12240	14350	25770	28490	45
70 feet	16	80.5	45560	59500	126530	126530	75
	20	77.1	37520	44440	101200	101200	75
	25	72.9	29600	33610	71110	76750	73
	30	68.5	23420	26830	53180	57870	72
	35	64.0	19190	22150	42230	46210	69
	40	59.3	16220	18830	34950	38400	67
	50	49.2	12120	14220	25670	28380	59
	60	37.0	9490	11260	20090	22320	49
80 feet	17	80.9	42820	54620	118950	118950	85
	20	78.7	37140	44210	101120	101120	85
	25	75.1	29390	33390	71010	76640	84
	30	71.3	23230	26630	53060	57750	82
	35	67.5	18990	21940	42090	46070	80
	40	63.5	16030	18630	34810	38250	78
	50	55.1	11920	14020	25520	28230	72
	60	45.8	9280	11040	19910	22140	64
90 feet	19	80.7	38520	47030	106380	106380	95
	20	80.0	36760	43960	101030	101030	95
	25	76.8	29180	33170	70900	76520	94
	30	73.5	23020	26410	52930	57600	93
	35	70.1	18780	21730	41940	45910	91
	40	66.7	15840	18430	34660	38100	89
	50	59.5	11720	13810	25350	28050	84
	60	51.7	9080	10830	19730	21950	77
100 feet	70	43.0	7330	8840	16060	17950	68
	80	32.5	5970	7300	13360	15000	55
	90	16.9	4930	6110	11340	12780	33
	35	72.2	18610	21550	41800	45760	102

Boom Length	Radius In Feet	Boom Angle Degrees	Free Ratings		Outriggers Extended & Set		Feet From Boom Point
			Over Side	Over Rear	Over Front* Or Side	Over Rear	
100 feet (cont.)	40	69.1	15680	18270	34530	37970	100
	50	62.8	11560	13650	25210	27910	95
	60	56.1	8920	10670	19590	21810	89
	70	48.9	7180	8690	15920	17810	82
	80	40.7	5830	7150	13230	14870	72
	90	30.7	4790	5960	11200	12650	58
	100	16.0	3970	5030	9620	10920	34
110 feet	22	80.8	33250	38680	73420	73420	115
	25	79.2	28780	32760	70670	73420	115
	30	76.5	22640	26020	52670	57330	113
	35	73.8	18390	21330	41640	45600	112
	40	71.1	15470	18060	34370	37810	111
	50	65.5	11350	13430	25040	27740	107
	60	59.6	8840	10590	19540	21760	101
	70	53.3	6980	8480	15750	17630	95
	80	46.4	5630	6950	13050	14680	86
	90	38.7	4580	5750	11010	12460	75
	100	29.2	3760	4810	9430	10720	60
	110	15.2	3100	4060	8170	9350	35
120 feet	24	80.6	30200	34310	61350	61350	125
	25	80.1	28560	32530	61350	61350	125
	30	77.7	22430	25800	52530	57190	124
	35	75.2	18180	21110	41490	45440	122
	40	72.7	15260	17850	34210	37640	121
	50	67.6	11140	13220	24860	27560	117
	60	62.4	8630	10380	19360	21580	113
	70	56.8	6790	8290	15580	17460	107
	80	50.8	5430	6740	12870	14500	100
	90	44.3	4380	5550	10830	12270	90
	100	37.0	3560	4620	9240	10540	79
	110	28.0	2890	3850	7980	9150	63
130 feet	120	14.5	2350	3240	6950	8020	37
	25	80.9	—	—	51400	51400	135
	30	78.6	—	—	51160	51160	134
	35	76.4	—	—	41330	45280	133
	40	74.1	—	—	34060	37490	131
	50	69.4	—	—	24700	27390	128
	60	64.6	—	—	19200	21420	124
	70	59.6	—	—	15420	17300	119
	80	54.4	—	—	12700	14340	112
	90	48.7	—	—	10660	12110	104
	100	42.5	—	—	9080	10380	94
	110	35.4	—	—	7810	8980	82
140 feet	120	26.8	—	—	6780	7850	65
	130	13.9	—	—	5930	6910	38
	27	80.7	—	—	43830	43830	145
	30	79.5	—	—	43740	43740	144
	35	77.4	—	—	41170	43180	143
	40	75.3	—	—	33900	37320	142
	50	71.0	—	—	24520	27210	139
	60	66.6	—	—	19040	21250	135
140 feet (cont.)	70	62.0	—	—	15230	17110	130
	80	57.3	—	—	12520	14150	124
	90	52.2	—	—	10470	11910	117
	100	46.8	—	—	8890	10180	109
	110	40.9	—	—	7610	8780	98
	120	34.1	—	—	6580	7640	85
	130	25.8	—	—	5710	6690	67
	140	13.4	—	—	4990	5900	39

*With optional front outrigger

(Continued)



LIFT RATINGS (cont.)

With 47H Tubular Chord Lattice Boom and "P-P" Counterweight (26,500 lb)

Boom Length	Radius In Feet	Boom Angle Degrees	Free Ratings		Outriggers Extended & Set		Feet From Boom Point
			Over Side	Over Rear	Over Front* Or Side	Over Rear	
150 feet	28	80.9	—	—	36910	36910	155
	30	80.2	—	—	36850	36850	154
	35	78.2	—	—	36410	36410	153
	40	76.3	—	—	33740	35920	152
	50	72.3	—	—	24340	27030	149
	60	68.2	—	—	18850	21060	146
	70	64.0	—	—	15060	16930	141
	80	59.7	—	—	12330	13960	136
	90	55.1	—	—	10290	11730	130
	100	50.3	—	—	8700	9990	122
	110	45.1	—	—	7420	8590	113
	120	39.4	—	—	6370	7440	102
	130	32.9	—	—	5510	6490	88
	140	24.9	—	—	4780	5690	70
	150	13.0	—	—	4170	5020	40
160 feet	30	80.8	—	—	32060	32060	164
	35	79.0	—	—	31660	31660	164
	40	77.1	—	—	31090	31090	162
	50	73.4	—	—	24170	26850	160
	60	69.6	—	—	18700	20910	156
	70	65.8	—	—	14880	16760	152
	80	61.8	—	—	12160	13790	147
	90	57.6	—	—	10110	11550	142

Boom Length	Radius In Feet	Boom Angle Degrees	Free Ratings		Outriggers Extended & Set		Feet From Boom Point
			Over Side	Over Rear	Over Front* Or Side	Over Rear	
160 feet (cont.)	100	53.2	—	—	8520	9810	135
	110	48.6	—	—	7240	8410	126
	120	43.6	—	—	6200	7260	117
	130	38.1	—	—	5330	6310	105
	140	31.8	—	—	4600	5510	91
	150	24.1	—	—	3980	4830	72
	160	12.5	—	—	3450	4240	41
170 feet	31	81.0	—	—	28030	28030	174
	35	79.6	—	—	27710	27710	174
	40	77.9	—	—	27190	27190	173
	50	74.4	—	—	23990	25400	170
	60	70.9	—	—	18520	20720	167
	70	67.3	—	—	14710	16580	163
	80	63.6	—	—	11970	13590	159
	90	59.7	—	—	9920	11360	153
	100	55.7	—	—	8320	9610	147
	110	51.5	—	—	7040	8210	140
	120	47.1	—	—	5990	7060	131
	130	42.2	—	—	5130	6110	121
	140	36.9	—	—	4390	5300	109
	150	30.8	—	—	3770	4620	94
	160	23.4	—	—	3230	4020	74
	170	12.1	—	—	2780	3520	42

* With optional front outrigger

5530.31

LIFT RATINGS IN KILOGRAMS

With 47H Tubular Chord Lattice Boom and "P-P" Counterweight (12020 Kg.)

Boom Length	Radius In Meters	Boom Angle Degrees	Free Ratings		Outriggers Extended & Set		Meters From Boom Point
			Over Side	Over Rear	Over Front* Or Side	Over Rear	
12.19M (40')	3.3	80.7	0	47160	68040	68040	14.0
	3.5	79.8	0	43190	68040	68040	14.0
	4.0	77.4	0	35640	68040	68040	13.9
	4.5	75.0	0	30320	62360	62360	13.7
	5.0	72.5	0	26340	56110	56110	13.6
	6.0	67.5	0	20810	46600	46600	13.2
	7.0	62.2	13180	17150	37310	39040	12.8
	8.0	56.7	12800	14560	29830	32290	12.2
	9.0	50.8	11040	12610	24800	26980	11.4
	10.0	44.3	9660	11090	21170	23120	10.5
	11.0	36.9	8570	9880	18440	20200	9.3
	12.0	27.8	7690	8900	16320	17920	7.7
15.24M (50')	3.8	80.7	0	38270	68040	68040	17.0
	4.5	78.0	0	30250	62310	62310	16.9
	5.0	76.1	0	26260	56060	56060	16.8
	6.0	72.2	17540	20730	46540	46540	16.5
	7.0	68.1	15110	17070	37310	39020	16.1
	8.0	64.0	12730	14480	29810	32260	15.7
	9.0	59.7	10970	12550	24780	26950	15.1
	10.0	55.2	9590	11020	21140	23080	14.5
	11.0	50.4	8500	9810	18410	20160	13.7
	12.0	45.3	7630	8830	16280	17880	12.8
	13.0	39.6	6890	8010	14570	16030	11.7
	14.0	33.1	6270	7310	13170	14520	10.3
	15.0	25.2	5730	6710	11990	13240	8.5
8.29M (60')	4.3	80.7	0	32070	65140	65140	20.0
	4.5	80.0	0	30160	62270	62270	20.0
	5.0	78.4	20350	26170	56010	56010	19.9
	6.0	75.2	17380	20640	46420	46420	19.7
	7.0	71.9	15030	16990	37290	38820	19.4
	8.0	68.6	12650	14400	29780	32220	19.0
	9.0	65.2	10900	12470	24740	26910	18.6
	10.0	61.6	9520	10940	21100	23040	18.1
	11.0	58.0	8420	9720	18350	20100	17.5
	12.0	54.2	7560	8760	16240	17840	16.8
	13.0	50.2	6820	7930	14520	15980	16.0
	14.0	45.9	6200	7230	13110	14460	15.1
	15.0	41.3	5660	6630	11930	13190	14.0

Boom Length	Radius In Meters	Boom Angle Degrees	Free Ratings		Outriggers Extended & Set		Meters From Boom Point
			Over Side	Over Rear	Over Front* Or Side	Over Rear	
8.29M (60') (cont.)	16.0	36.2	5200	6110	10940	12110	12.8
	17.0	30.4	4800	5660	10090	11180	11.2
	18.0	23.3	4450	5260	9350	10380	9.2
21.34M (70')	4.7	80.9	21320	28360	59560	59560	23.0
	5.5	78.8	18650	23040	50900	50900	22.9
	6.0	77.4	17260	20570	46310	46310	22.8
	7.0	74.6	14960	16920	37260	38850	22.5
	8.0	71.8	12590	14330	29760	32200	22.2
	9.0	68.9	10840	12410	24710	26880	21.9
	10.0	66.0	9460	10890	21060	23000	21.5
	11.0	63.0	8360	9670	18310	20060	21.0
	12.0	59.9	7510	8710	16210	17800	20.4
	13.0	56.8	6770	7880	14490	15940	19.8
	14.0	53.5	6150	7180	13080	14420	19.1
	15.0	50.0	5610	6580	11890	13140	18.3
	16.0	46.4	5150	6060	10900	12070	17.4
	17.0	42.5	4740	5610	10040	11140	16.4
	18.0	38.3	4390	5200	9300	10330	15.2
	19.0	33.6	4100	4870	8670	9640	13.8
	20.0	28.3	3820	4550	8100	9020	12.1
24.38M (80')	5.2	80.9	19360	24660	53760	53760	26.0
	6.0	79.0	17090	20470	46150	46150	25.9
	7.0	76.6	14860	16810	37230	38580	25.7
	8.0	74.1	12500	14230	29700	32140	25.4
	9.0	71.7	10750	12310	24660	26820	25.1
	10.0	69.2	9370	10790	21000	22930	24.8
	11.0	66.6	8270	9570	18250	19990	24.3
	12.0	64.0	7420	8620	16140	17730	23.9
	13.0	61.4	6680	7790	14420	15880	23.4
	14.0	58.6	6050	7080	13000	14350	22.8
	15.0	55.8	5520	6490	11820	13070	22.1
	16.0	52.9	5060	5960	10820	11990	21.4
	17.0	49.9	4650	5510	9970	11060	20.6
	18.0	46.7	4300	5110	9220	10250	19.7
	19.0	43.4	4020	4790	8600	9580	18.7
	20.0	39.8	3740	4470	8030	8940	17.6
	22.0	31.6	3260	3920	7050	7880	14.7
	24.0	20.7	2860	3470	6270	7020	10.6

*With optional front outrigger

**LIFT RATINGS (cont.)**

With 47H Tubular Chord Lattice Boom and "P-P" Counterweight (12020 Kg.)

Boom Length	Radius In Meters	Boom Angle Degrees	Free Ratings		Outriggers Extended & Set		Meters From Boom Point
			Over Side	Over Rear	Over Front* Or Side	Over Rear	
27.43M (90')	5.7	80.9	17720	21780	48760	48760	29.1
	6.0	80.2	16910	20360	46050	46050	29.0
	7.0	78.1	14700	16710	37170	38570	28.8
	8.0	75.9	12400	14130	29650	32080	28.6
	9.0	73.8	10650	12220	24600	26780	28.3
	10.0	71.6	9090	10700	20940	22870	28.0
	11.0	69.4	8170	9470	18180	19920	27.6
	12.0	67.1	7330	8530	16080	17660	27.2
	13.0	64.8	6590	7690	14350	15800	26.8
	14.0	62.5	5960	6990	12930	14270	26.3
	15.0	60.1	5420	6390	11750	13000	25.7
	16.0	57.6	4970	5870	10750	11910	25.1
	17.0	55.1	4570	5420	9890	10980	24.5
	18.0	52.5	4210	5020	9140	10170	23.7
	19.0	49.8	3940	4700	8530	9500	22.9
	20.0	47.0	3660	4390	7960	8870	22.0
30.48M (100')	22.0	40.9	3170	3840	6980	7810	19.9
	24.0	33.9	2780	3380	6190	6950	17.3
	26.0	25.3	2440	3010	5540	6240	13.7
	6.2	80.8	16340	19470	40500	40500	32.1
	7.0	79.3	14570	16620	37130	38330	31.9
	8.0	77.4	12320	14050	29590	32020	31.7
	9.0	75.4	10580	12140	24550	26700	31.5
	10.0	73.5	9190	10610	20880	22810	31.2
	11.0	71.5	8100	9390	18120	19860	30.9
	12.0	69.5	7260	8450	16020	17600	30.5
	13.0	67.5	6510	7620	14290	15740	30.1
	14.0	65.4	5890	6920	12870	14220	29.7
	15.0	63.3	5360	6320	11680	12930	29.2
	16.0	61.2	4890	5800	10690	11850	28.7
	17.0	59.0	4490	5340	9820	10910	28.1
	18.0	56.8	4140	4940	9080	10100	27.5
33.53M (110')	19.0	54.5	3870	4640	8470	9440	26.8
	20.0	52.1	3590	4320	7900	8810	26.0
	22.0	47.2	3110	3770	6920	7750	24.3
	24.0	41.8	2710	3320	6130	6890	22.3
	26.0	35.7	2370	2930	5480	6170	19.8
	28.0	28.5	2090	2610	4930	5570	16.5
	30.0	19.0	1850	2340	4460	5060	11.9
	6.6	81.0	15300	17910	33000	33000	35.1
	7.0	80.3	14470	16580	33000	33000	35.0
	8.0	78.5	12210	13950	29530	31960	34.8
	9.0	76.8	10480	12040	24480	26630	34.6
	10.0	75.0	9100	10510	20820	22740	34.4
	11.0	73.2	8000	9290	18040	19780	34.1
	12.0	71.4	7170	8350	15950	17530	33.8
	13.0	69.6	6420	7520	14220	15670	33.4
	14.0	67.8	5800	6830	12800	14140	33.0
	15.0	65.9	5260	6220	11610	12850	32.6
36.58M (120')	16.0	64.0	4790	5700	10600	11760	32.1
	17.0	62.1	4390	5240	9740	10830	31.6
	18.0	60.1	4040	4840	8990	10020	31.0
	19.0	58.1	3780	4540	8400	9360	30.4
	20.0	56.1	3500	4220	7820	8730	29.8
	22.0	51.9	3020	3680	6840	7670	28.3
	24.0	47.3	2620	3220	6050	6800	26.6
	26.0	42.5	2280	2840	5390	6080	24.6
	28.0	37.1	2000	2520	4840	5490	22.2
	30.0	30.9	1750	2240	4380	4970	19.2
	32.0	23.3	1540	2000	3970	4530	15.2
	7.1	80.9	14110	16180	27620	27620	38.1
	8.0	79.5	12120	13840	27620	27620	37.9
	9.0	77.9	10390	11940	24430	26570	37.7
	10.0	76.3	9000	10410	20740	22660	37.5
	11.0	74.7	7900	9190	17970	19700	37.2
	12.0	73.0	7070	8260	15880	17460	37.0
39.62M (130')	13.0	71.4	6330	7430	14140	15590	36.6
	14.0	69.7	5700	6730	12720	14060	36.3
	15.0	68.0	5160	6120	11530	12770	35.9
	16.0	66.3	4700	5600	10520	11680	35.5
	17.0	64.6	4300	5150	9660	10750	35.0
	18.0	62.9	3940	4740	8910	9930	34.5
	19.0	61.1	3690	4450	8320	9280	34.0
	20.0	59.3	3410	4130	7730	8650	33.4
	22.0	55.5	2920	3580	6760	7580	32.1
	24.0	51.6	2530	3130	5960	6720	30.6
	26.0	47.5	2190	2750	5310	6000	28.9
	28.0	43.0	1900	2430	4760	5400	26.9
	30.0	38.2	1660	2150	4290	4880	24.6
	32.0	32.7	1450	1910	3890	4440	21.7
	34.0	26.3	1270	1690	3530	4050	18.2
	36.0	17.8	1110	1510	3230	3720	13.2
39.62M (130')	7.6	80.9	—	—	23090	23090	41.1
	8.0	80.3	—	—	23090	23090	41.0
	9.0	78.9	—	—	23070	23070	40.8
	10.0	77.4	—	—	20670	22590	40.6
	11.0	75.9	—	—	17890	19630	40.4

Boom Length	Radius In Meters	Boom Angle Degrees	Free Ratings		Outriggers Extended & Set		Meters From Boom Point
			Over Side	Over Rear	Over Front* Or Side	Over Rear	
39.62M (130')	12.0	74.4	—	—	15810	17390	40.1
	13.0	72.9	—	—	14070	15520	39.8
	14.0	71.4	—	—	12650	13980	39.5
	15.0	69.8	—	—	11460	12700	39.2
	16.0	68.3	—	—	10450	11610	38.8
	17.0	66.7	—	—	9580	10670	38.4
	18.0	65.1	—	—	8830	9850	37.9
	19.0	63.5	—	—	8250	9210	37.4
	20.0	61.9	—	—	7670	8580	36.9
	22.0	58.5	—	—	6690	7510	35.8
	24.0	55.0	—	—	5890	6640	34.4
	26.0	51.4	—	—	5240	5930	32.9
	28.0	47.6	—	—	4690	5320	31.2
	30.0	43.5	—	—	4210	4810	29.3
	32.0	39.1	—	—	3810	4370	27.0
	34.0	34.2	—	—	3460	3980	24.3
36.0	28.6	—	—	3150	3640	21.0	
38.0	21.7	—	—	2880	3340	16.6	
42.67M (140')	8.1	80.9	—	—	19820	19820	44.1
	9.0	79.7	—	—	19760	19760	43.9
	10.0	78.3	—	—	19600	19600	43.8
	11.0	76.9	—	—	17820	19410	43.5
	12.0	75.5	—	—	15730	17310	43.3
	13.0	74.1	—	—	13990	15440	43.0
	14.0	72.7	—	—	12570	13900	42.7
	15.0	71.3	—	—	11380	12610	42.4
	16.0	69.9	—	—	10360	11520	42.0
	17.0	68.4	—	—	9500	10590	41.7
	18.0	67.0	—	—	8830	9850	41.2
	19.0	65.5	—	—	8170	9130	40.8
	20.0	64.0	—	—	7580	8500	40.3
	22.0	61.0	—	—	6600	7430	39.3
	24.0	57.9	—	—	5810	6560	38.1
	26.0	54.6	—	—	5150	5840	36.8
28.0	51.3	—	—	4590	5230	35.2	
30.0	47.7	—	—	4130	4720	33.5	
32.0	43.9	—	—	3720	4280	31.6	
34.0	39.9	—	—	3370	3890	29.3	
36.0	35.5	—	—	3060	3550	26.7	
38.0	30.5	—	—	2780	3250	23.6	
40.0	24.6	—	—	2540	2980	19.7	
42.0	16.9	—	—	2330	2740	14.4	
45.72M (150')	8.5	81.0	—	—	16610	16610	47.1
	9.0	80.4	—	—	16610	16610	47.0
	10.0	79.1	—	—	16490	16490	46.9
	11.0	77.8	—	—	16370	16370	46.7
	12.0	76.5	—	—	15660	16200	46.4
	13.0	75.2	—	—	13920	15360	46.2
	14.0	73.9	—	—	12490	13820	45.9
	15.0	72.6	—	—	11290	12530	45.6
	16.0	71.3	—	—	10280	11430	45.3
	17.0	70.0	—	—	9410	10500	44.9
	18.0	68.6	—	—	8740	9770	44.5
	19.0	67.3	—	—	8080	9050	44.1
	20.0	65.9	—	—	7510	8420	43.7
	22.0	63.1	—	—	6520	7340	42.7
	24.0	60.2	—	—	5720	6480	41.7
	26.0	57.3	—	—	5070	5760	40.4
28.0	54.3	—	—	4510	5150	39.1	
30.0	51.1	—	—	4040	4630	37.5	
32.0	47.8	—	—	3630	4190	35.8	
34.0	44.3	—	—	3280	3800	33.9	
36.0	40.5	—	—	2970	3460	31.7	
38.0	36.5	—	—	2690	3160	29.2	
40.0	32.0	—	—	2450	2890	26.2	
42.0	26.9	—	—	2230	2650	22.6	
44.0	20.6	—	—	2040	2440	18.0	
48.77M (160')	9.0	81.0	—	—	14440	14440	50.1
	10.0	79.8	—	—	14340	14340	50.0
	11.0	78.6	—	—	14200	14200	49.8
	12.0	77.4	—	—	14040	14040	49.6
	13.0	76.2	—	—	13830	13830	49.3
	14.0	74.9	—	—	12410	13650	49.1
	15.0	73.7	—	—	11220	12460	48.8
	16.0	72.5	—	—	10200	11360	48.5
	17.0	71.3	—	—	9330	10410	48.1
	18.0	70.0	—	—	8680	9690	47.8
	19.0	68.8	—	—	8010	8980	47.4
	20.0	67.5	—	—	7430	8340	47.0
	22.0	64.9	—	—	6440	7270	46.1
	24.0	62.3	—	—	5650	6400	45.1
	26.0	59.6	—	—	4980	5670	44.0
	28.0	56.8	—	—	4440	5070	42.8
30.0	53.9	—	—	3960	4560	41.4	
32.0	51.0	—	—	3550	4110	39.9	
34.0	47.9	—	—	3200	3720	38.1	
36.0	44.6	—	—	2890	3380	36.2	



LIFT RATINGS (cont.)

With 47H Tubular Chord Lattice Boom and "P-P" Counterweight (12020 Kg.)

Boom Length	Radius In Meters	Boom Angle Degrees	Free Ratings		Outriggers Extended & Set		Meters From Boom Point
			Over Side	Over Rear	Over Front* Or Side	Over Rear	
48.77M (160')	38.0	41.1	—	—	2610	3080	34.0
	40.0	37.4	—	—	2370	2810	31.6
	42.0	33.3	—	—	2150	2570	28.7
	44.0	28.7	—	—	1950	2350	25.4
	46.0	23.3	—	—	1780	2160	21.2
	48.0	16.2	—	—	1620	1980	15.6
51.82M (170')	9.5	80.9	—	—	12620	12620	53.1
	10.0	80.4	—	—	12520	12520	53.1
	11.0	79.3	—	—	12410	12410	52.9
	12.0	78.1	—	—	12240	12240	52.7
	13.0	77.0	—	—	12050	12050	52.5
	14.0	75.9	—	—	11780	11780	52.2
	15.0	74.7	—	—	11140	11490	51.9
	16.0	73.6	—	—	10120	11220	51.7
	17.0	72.4	—	—	9240	10330	51.4
	18.0	71.2	—	—	8590	9610	51.0
	19.0	70.1	—	—	7930	8890	50.7

Boom Length	Radius In Meters	Boom Angle Degrees	Free Ratings		Outriggers Extended & Set		Meters From Boom Point
			Over Side	Over Rear	Over Front* Or Side	Over Rear	
51.82M (170') (cont.)	20.0	68.9	—	—	7340	8260	50.3
	22.0	66.5	—	—	6360	7180	49.5
	24.0	64.0	—	—	5560	6310	48.6
	26.0	61.5	—	—	4900	5590	47.5
	28.0	59.0	—	—	4350	4980	46.4
	30.0	56.4	—	—	3870	4470	45.1
	32.0	53.7	—	—	3470	4020	43.7
	34.0	50.9	—	—	3110	3630	42.2
	36.0	47.9	—	—	2800	3290	40.4
	38.0	44.9	—	—	2520	2990	38.5
	40.0	41.6	—	—	2280	2720	36.4
	42.0	38.2	—	—	2050	2480	34.0
	44.0	34.4	—	—	1860	2260	31.2
	46.0	30.2	—	—	1680	2060	28.0
	48.0	25.4	—	—	1520	1890	24.2
	50.0	19.6	—	—	1370	1720	19.4

* With optional front outrigger

5530.42M

CRANE RATING DATA

Load ratings are in pounds (kilograms) and do not exceed 85% of the load which would cause tipping with crane standing level on firm uniformly supporting surface. Safe loads depend on ground conditions, boom length, radius of operation, and proper handling, all of which must be taken into consideration by user.

Tire inflation pressure for "Free-Ratings" and up to 1 M.P.H. 1.6 km/h) is 100 P.S.I. (689.47 kPa). Free ratings do not exceed maximum permissible tire load. Tire pressure shall be reduced for over-the-road travel.

Approved working areas "Free Over Side" and "Free Over Rear" are shown under Diagram No. 1. Approved working areas "Outriggers Extended and Set Over Front, Side or Rear" are shown under Diagram No. 2.

"Radius in feet" (meters) is the horizontal distance at crane base level from center pin to a vertical line through the center of gravity of the suspended load.

Lifting is approved only in those areas for which ratings are shown in the rating chart. Blocks, slings, buckets and other load carrying devices are considered part of the load. Retractable A-frame must be in fully raised position for all ratings. Ratings in shaded areas are limited by strength of material or factors other than stability.

Main load line is 7/8 inch (22.2 mm) diameter IPS with a minimum breaking strength of 69,200 pounds (31389 kg.). Boom suspension line is 5/8 inch (15.9 mm) diameter EIPS with a minimum breaking strength of 41,200 pounds (18688 kg.). Boom suspension pendants are 1-1/4 inch (31.75 mm) diameter with a minimum breaking strength of 172,800 pounds (78382 kg.).

Boom and jib erection is over the rear of the machine with outriggers extended and set with "P-P" counterweight. A-frame must be fully raised and blocks, slings and other load carrying devices must be on the ground.

In compliance to B30.5 based on AMERICAN® carrier mounting.

Designed and rated to comply with ANSI Code B30.5.

LOAD HOISTING DATA

Maximum Lifting Capacity In Pounds	Minimum Parts of Load Line	Maximum Hoisting Distance		
		RH Drum With Controlled Load Lowering Ft.	LH Drum W/Indep. Controlled Load Lowering Ft.	LH Drum Without Controlled Load Lowering Ft.
150,000	8	64	37	49
138,400	7	73	43	56
118,620	6	85	50	65
98,850	5	102	60	78
79,080	4	128	75	98
59,310	3	171	101	131
39,540	2	256	151	196
19,770	1	512	303	392

Based On 7/8" Dia. IPS Load Line With 69,200 Lb. Minimum Breaking Strength

Maximum Lifting Capacity In Kilograms	Minimum Parts of Load Line	Maximum Hoisting Distance		
		RH Drum With Controlled Load Lowering M	LH Drum W/Indep. Controlled Load Lowering M	LH Drum Without Controlled Load Lowering M
68040	8	19.5	11.3	14.9
62778	7	22.3	13.11	17.1
58970	6	25.9	15.2	19.8
51580	5	31.1	18.3	23.8
41260	4	39.0	22.9	29.9
30950	3	52.4	30.8	39.9
20630	2	78.0	46.0	59.7
10310	1	156.1	92.3	119.4

Based On 22.2 MM Dia. Load Line With 31389 Kg. Minimum Breaking Strength



BOOM AND JIB ERECTION

Boom Length	Maximum Jib Length — Ft. No. 7HL
170'	60'

Erection is over the rear with outriggers extended and set and "P-P" counterweight.

Boom Length	Maximum Jib Length — M. No. 7HL
51.8 m	18.3 m

47H BOOM COMPOSITION

Boom Length		20 Ft. (6.1 m) 47H Inner	10 Ft. (3.0 m) 47H Center	20 Ft. (6.1 m) 47H Center	30 Ft. (9.1 m) 47H Center	20 Ft. (6.1 m) 47H Outer
In Feet	In Meters					
40	12.2	1	—	—	—	1
50	15.2	1	1	—	—	1
60	18.3	1	—	1	—	1
70	21.3	1	—	—	1	1
80	24.4	1	1	—	1	1
90	27.4	1	—	1	1	1
100	30.5	1	—	—	2	1
110	33.5	1	1	—	2	1
120	36.6	1	—	1	2	1
130	39.6	1	—	—	3	1
140	42.7	1	1	—	3	1
150	45.7	1	—	1	3	1
160	48.8	1	—	—	4	1
170	51.8	1	1	—	4	1

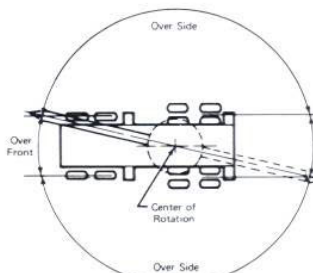


DIAGRAM NO. 1
FREE RATINGS

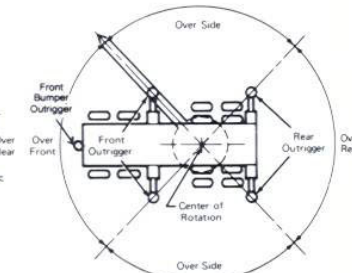


DIAGRAM NO. 2
OUTRIGGERS EXTENDED AND SET

PERFORMANCE

FRICTION SWING	3.5 RPM Max.	3.5 RPM Max.
HYDROSTATIC SWING	3.5 RPM Max.	3.5 RPM Max.
SINGLE LINE SPEED:		
Magnet — Hoist	200 FPM	61.0 MPM
Crane, Clam	165 FPM	50.3 MPM
Third Drum	212 FPM	64.6 MPM
SINGLE LINE PULL:		
Magnet — Hoist	16,600 lbs. SLP	7530 kgs.
Crane, Clam	20,000 lbs. SLP	9072 kgs.
Third Drum	15,000 lbs. SLP	6804 kgs.

Performance figures are based on machine equipped with stand-ard engine.

WEIGHTS

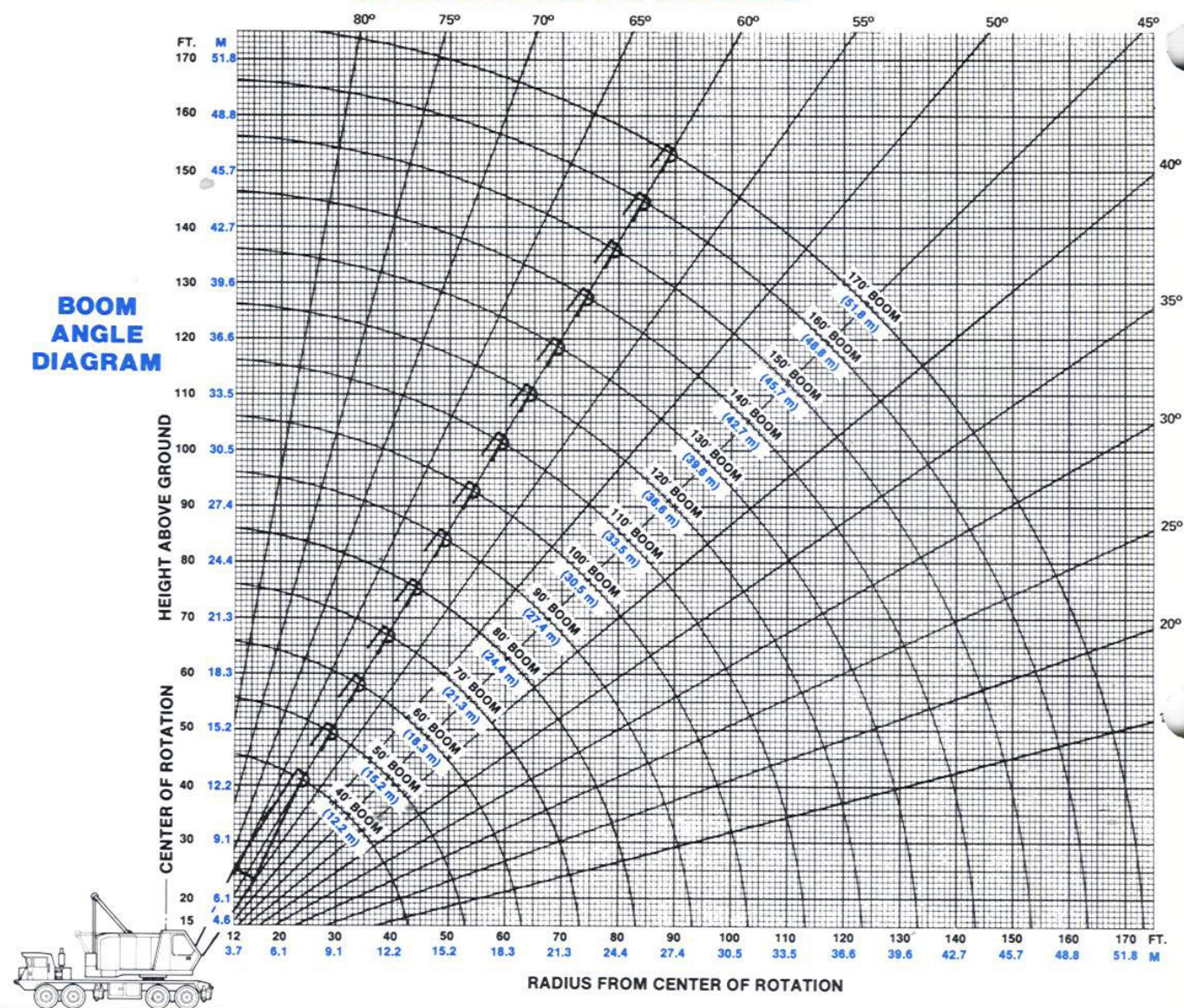
	Lbs.	Kgs.
5530 lifting crane with "P-P" counterweight and basic 40 ft. (12.2m) 47H boom	112,350	50962
"P-P" counterweight	26,500	12020
Crane boom outer	2,210	1002
Crane boom inner	1,750	794
Telescopic boom stops	350	159

NOTE: In accordance with varying material situations and the Company's policy of constant product improvement these specifications subject to change without notice and without incurring responsibility to units previously sold.



AMERICAN MODEL 5530 TRUCK CRANE WORKING RANGES

BOOM ANGLE DIAGRAM



J&B 9104

FORM NO. 5530-TR-6

PRINTED IN U.S.A.

SOLD & SERVICED BY:



American Crane Corporation

202 Raleigh Street

Wilmington, North Carolina 28412

AN EQUAL OPPORTUNITY EMPLOYER



500 SERIES TRUCK CRANE MODEL 5530 NO. 7HL JIB RATINGS WITH 47H BOOM

The ratings in this chart are for planning purposes only. Only those ratings specifically assigned to a crane and mounted in the Operator's Cab or in the Operator's Manual should be used for actual operation.

No. 7HL JIB RATINGS

With 47H Tubular Chord Boom and "P-P" (26,500 lb.) Counterweight

Boom Length	Load Radius In Feet	30 Ft. Jib			40 Ft. Jib			50 Ft. Jib			60 Ft. Jib		
		5° Offset	15° Offset	25° Offset	5° Offset	15° Offset	25° Offset	5° Offset	15° Offset	25° Offset	5° Offset	15° Offset	25° Offset
90'	26	16,000											
	30	16,000											
	35	16,000	16,000	16,000									
	40	16,000	16,000	16,000									
	50	16,000	16,000	16,000									
	60	16,000	16,000	16,000									
	70	15,790	15,790	15,800									
	80	13,120	13,120	13,120									
	90	11,120	11,120	11,120									
110'	29	16,000											
	30	16,000											
	31				16,000								
	35	16,000	16,000		16,000								
	40	16,000	16,000	16,000	16,000	16,000							
	50	16,000	16,000	16,000	16,000	16,000	16,000						
	60	16,000	16,000	16,000	16,000	16,000	14,680						
	70	15,410	15,410	15,410	15,470	15,470	13,500						
	80	12,740	12,740	12,740	12,790	12,790	12,570						
	90	10,720	10,720	10,730	10,790	10,790	10,790						
130'	100	9,160	9,160	9,160	9,220	9,220	9,220						
	110	7,910	7,910	7,920	7,970	7,970	7,970						
	32	16,000											
	34				16,000								
	35	16,000			16,000								
	37							16,000					
	40	16,000	16,000		16,000			16,000					
	50	16,000	16,000	16,000	16,000	16,000	15,870	16,000	14,290				
	60	16,000	16,000	16,000	16,000	16,000	15,300	15,400	13,780	12,310			
	70	15,020	15,020	15,020	15,070	15,080	14,180	14,750	13,090	11,790			
	80	12,340	12,340	12,340	12,400	12,400	12,400	12,450	12,430	11,100			
150'	90	10,330	10,330	10,330	10,390	10,390	10,390	10,430	10,430	10,370			
	100	8,760	8,770	8,770	8,810	8,810	8,820	8,870	8,870	8,870			
	110	7,510	7,510	7,520	7,560	7,560	7,560	7,610	7,610	7,610			
	120	6,480	6,480	6,490	6,540	6,540	6,540	6,580	6,590	6,590			
	130	5,630	5,640	5,640	5,680	5,680	5,680	5,720	5,730	5,730			
	35	16,000											
	37				16,000								
	40	16,000	16,000		16,000			15,800					
	42										12,770		
	50	16,000	15,670	13,090	16,000	14,280	11,500	15,200	12,890		12,350		
	60	16,000	14,940	12,680	15,360	13,730	11,280	14,330	12,480	9,910	11,770	10,180	
	70	14,610	14,240	12,120	14,450	13,090	10,890	13,560	11,980	9,710	11,210	9,630	8,500
	80	11,930	11,930	11,560	11,990	11,990	10,490	12,040	11,440	9,380	10,520	9,120	8,120
	90	9,910	9,910	9,920	9,970	9,970	9,970	10,020	10,020	9,030	9,890	8,710	7,830
	100	8,340	8,340	8,340	8,400	8,400	8,400	8,450	8,450	8,450	8,470	8,320	7,540
	110	7,090	7,090	7,090	7,130	7,130	7,140	7,180	7,180	7,190	7,210	7,210	7,210
	120	6,050	6,060	6,060	6,110	6,110	6,110	6,160	6,160	6,160	6,190	6,190	6,190
	130	5,200	5,200	5,210	5,250	5,250	5,250	5,300	5,300	5,300	5,320	5,320	5,330
	140	4,470	4,480	4,480	4,530	4,530	4,530	4,570	4,580	4,580	4,600	4,600	4,610
	150	3,860	3,860	3,860	3,910	3,910	3,920	3,960	3,960	3,960	3,980	3,980	3,990
170'	38	13,510											
	40	13,340											
	41				12,540								
	43							11,670					
	45										10,800		
	50	12,490	11,390	9,480	11,800	10,470		11,110			10,440		
	60	11,690	10,730	9,050	11,040	9,940	8,130	10,400	9,110	7,230	9,730	8,270	
	70	10,870	10,110	8,540	10,270	9,360	7,750	9,680	8,630	6,970	9,070	7,890	6,150
	80	10,140	9,430	8,000	9,600	8,800	7,310	9,050	8,130	6,630	8,460	7,470	5,900
	90	9,420	8,810	7,490	8,920	8,250	6,890	8,390	7,630	6,260	7,870	7,020	5,620
	100	7,950	7,950	6,950	7,990	7,710	6,430	7,820	7,160	5,900	7,320	6,590	5,330
	110	6,680	6,680	6,450	6,730	6,730	6,000	6,780	6,700	5,530	6,800	6,160	5,010
	120	5,660	5,660	5,660	5,700	5,700	5,570	5,740	5,740	5,140	5,770	5,770	4,680
	130	4,800	4,800	4,800	4,840	4,840	4,850	4,890	4,890	4,780	4,910	4,910	4,370
	140	4,060	4,070	4,070	4,110	4,110	4,120	4,160	4,160	4,160	4,180	4,100	4,050
	150	3,450	3,450	3,450	3,490	3,490	3,490	3,540	3,510	3,540	3,560	3,560	3,570
	160	2,920	2,920	2,920	2,950	2,950	2,960	3,000	3,000	3,000	3,020	3,020	3,030
	170	2,440	2,440	2,450	2,480	2,490	2,490	2,530	2,530	2,530	2,550	2,550	2,560

J5530.02

FORM NO. 5530-J7-2



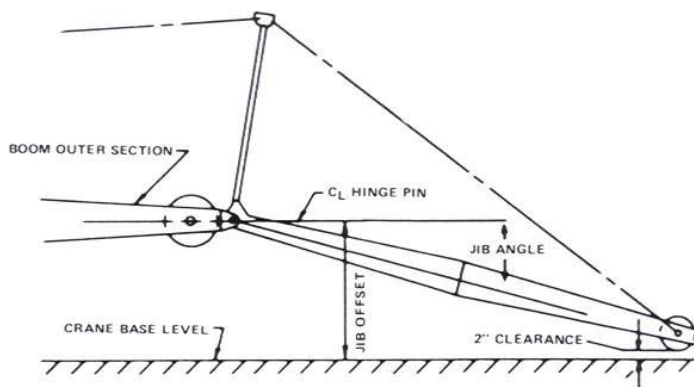
NO. 7HL JIB RATING DATA

Load ratings are in pounds and do not exceed 85% of the load which would cause tipping with crane standing level on firm uniformly supporting surface. Safe loads depend on ground conditions, boom lengths, radius of operation, and proper handling, all of which must be taken into consideration by user. Radius in feet is the horizontal distance at crane base level from center of rotation to a vertical line through the center of gravity of the suspended load. Lifting is approved only in those areas for which ratings are shown in the rating chart. Blocks, slings, buckets, and other load carrying devices are considered part of the load. Retractable A-frame must be in fully raised position for all ratings. Ratings in shaded areas are limited by strength of material, or factors other than stability.

When using the main boom fall with the jib in place, the main fall ratings must be reduced by the jib effective weight shown in the table below, and the weight of all suspended blocks, slings, etc., at the main fall and twice the weight of any such devices at the jib fall. All load carrying devices are considered part of the load.

Jib backstay line is 7/8 inch diameter wire rope with a minimum breaking strength of not less than 69,200 pounds.

Whip-line is 3/4 inch diameter 6 x 25, P, RRL, FW, IPS, IWRC wire rope with a minimum strength of not less than 58,800 pounds. Designed and rated to comply with ANSI Code B30.5.



JIB COMPOSITION

Jib Length (Feet)	10' Inner	10' Center	20' Center	20' Outer	Eff. Jib Weight in Lbs.	Jib Offset "A" in Feet		
						5°	15°	25°
30	1	0	0	1	1,400	3'10"	7'8"	11'4"
40	1	1	0	1	1,950	4'6"	9'6"	14'4"
50	1	0	1	1	2,630	5'2"	11'6"	17'7"
60	1	1	1	1	2,950	5'9"	13'3"	20'7"

LOAD HOISTING DATA

Maximum Lifting Capacity — Lbs.	Minimum Pts. of Line	Maximum Hoisting Distance	
		Main Drum	Aux. Drum
16,000	1	818'	628'

NOTE: In accordance with varying material situations and the Company's policy of constant product improvement these specifications subject to change without notice and without incurring responsibility to units previously sold.

5JR81-6

FORM NO. 5530-J7-2

PRINTED IN U.S.A.

SOLD & SERVICED BY:


CONSTRUCTION EQUIPMENT GROUP
63 SO. ROBERT ST., ST. PAUL, MN 55107



AMERICAN HOIST & DERRICK COMPANY
AN EQUAL OPPORTUNITY EMPLOYER