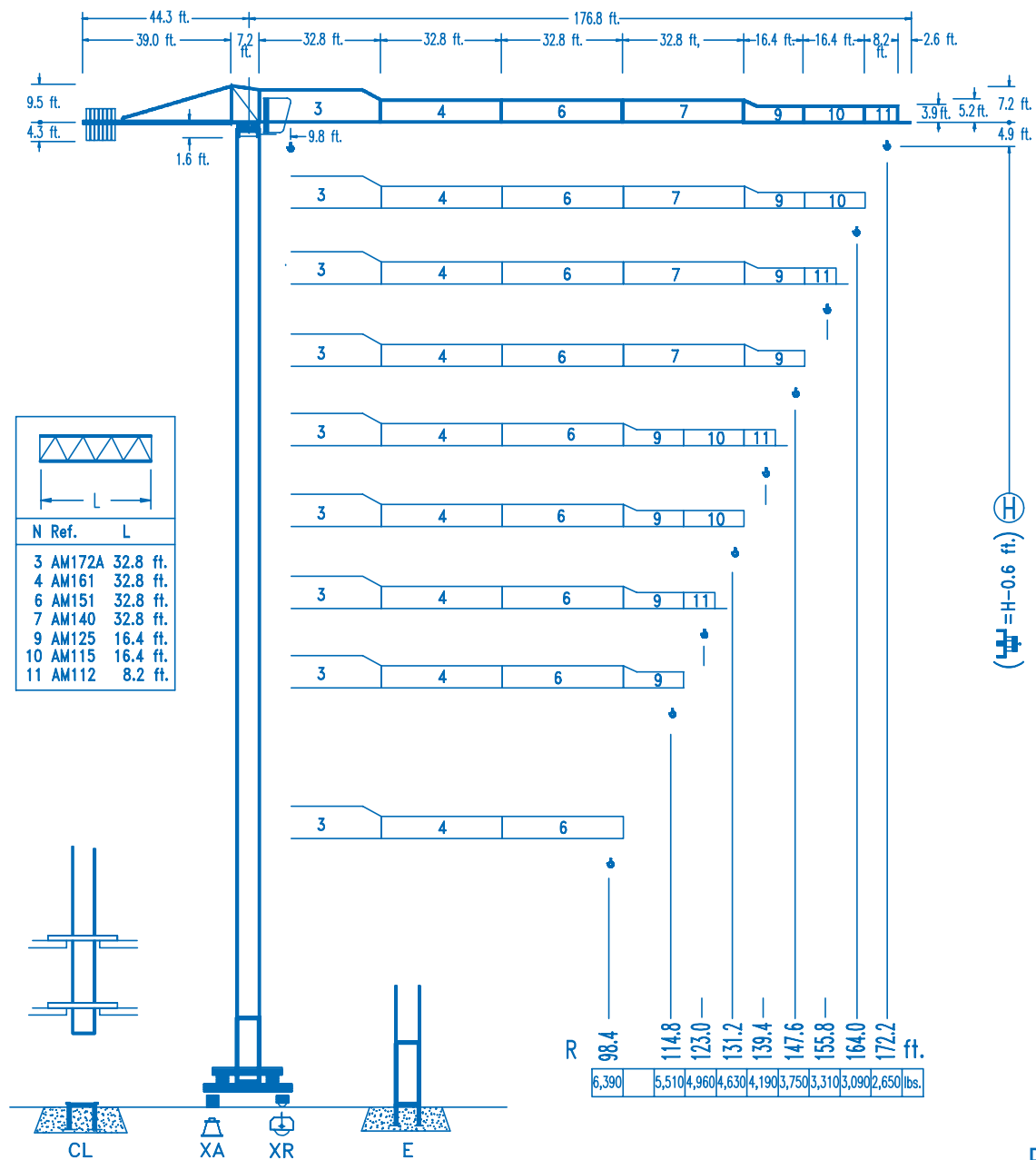


**LINDEN 1100**

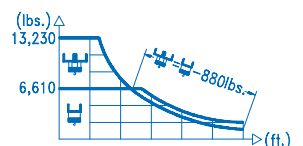
**11 LC 90**

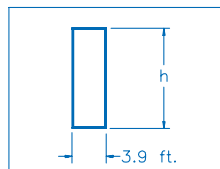
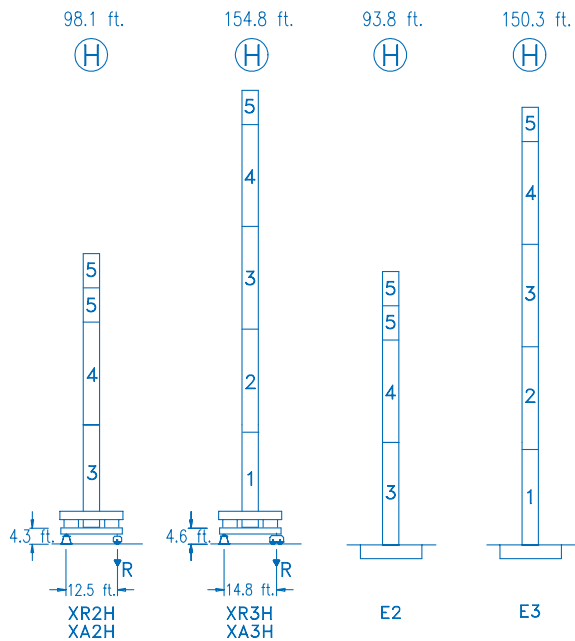
**13,230 lbs.**



**CE**  
DIN 15018 H1 B3

R																		
	42.0	45.9	52.5	59.1	65.6	73.5	81.7	91.9	98.4	105.0	114.8	123.0	131.2	139.4	147.6	155.8	164.0	172.2 ft.
172.2	13,230	11,880	10,100	8,730	7,630	6,610	6,610	5,750	5,310	4,920	4,410	4,060	3,750	3,480	3,240	3,020	2,820	2,650 lbs.
164.0	44.9	45.9	52.5	59.1	65.6	78.4	87.3	91.9	98.4	105.0	114.8	123.0	131.2	139.4	147.6	155.8	164.0 ft.	
155.8	13,230	12,830	10,930	9,460	8,290	6,610	6,610	6,240	5,750	5,340	4,810	4,410	4,080	3,790	3,530	3,280	3,090 lbs.	
147.6	44.9	45.9	52.5	59.1	65.6	78.4	87.6	91.9	98.4	105.0	114.8	123.0	131.2	139.4	147.6	155.8 ft.		
139.4	13,230	12,850	10,930	9,480	8,310	6,610	6,610	6,260	5,780	5,360	4,810	4,430	4,100	3,790	3,550	3,310 lbs.		
131.2	46.9	52.5	59.1	65.6	72.2	82.0	82.0	91.5	98.4	105.0	114.8	123.0	131.2	139.4	147.6 ft.			
123.0	13,230	11,530	9,990	8,770	7,780	6,610	6,610	6,080	5,640	5,070	4,670	4,320	4,010	3,750 lbs.				
114.8	48.2	52.5	59.1	65.6	72.2	84.6	94.8	98.4	105.0	114.8	123.0	131.2	139.4 ft.					
98.4	13,230	11,950	10,360	9,100	8,090	6,610	6,610	6,330	5,860	5,290	4,870	4,500	4,190 lbs.					
	49.2	52.5	59.1	65.6	72.2	82.0	82.0	96.8	105.0	114.8	123.0	131.2 ft.						
	13,230	12,240	10,630	9,350	8,290	7,050	6,610	6,610	6,020	5,420	5,000	4,630 lbs.						
	48.9	52.5	59.1	65.6	72.2	82.0	85.6	96.1	105.0	114.8	123.0 ft.							
	13,230	12,130	10,520	9,260	8,220	6,990	6,610	6,610	5,970	5,380	4,960 lbs.							
	49.9	52.5	59.1	65.6	72.2	82.0	87.3	98.1	105.0	114.8 ft.								
	13,230	12,390	10,760	9,460	8,400	7,140	6,610	6,610	6,130	5,510 lbs.								
	48.2	52.5	59.1	65.6	72.2	84.6	95.5	98.4 ft.										
	13,230	11,970	10,380	9,130	8,090	6,610	6,610	6,390 lbs.										

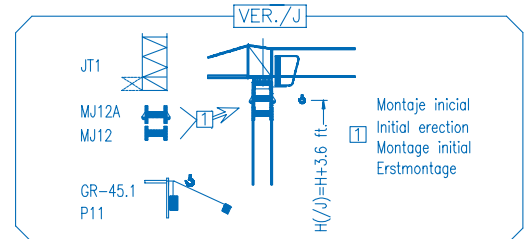
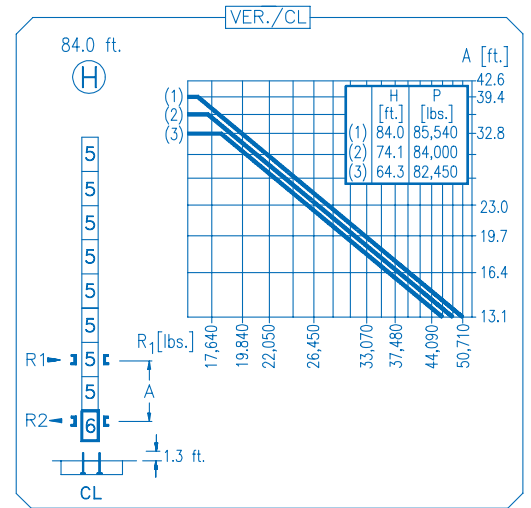




N	Ref.	h
1	MT123	33.1 ft.
2	MT123A	33.1 ft.
3	MH124A	38.7 ft.
4	MH124-1	38.7 ft.
5	MH121	9.8 ft.
6	CL20	7.2 ft.

MH124-1=(4)MH121-0.6 ft.

	H=H+0.6 ft.
	H=H
	H=H
	H=H-0.6 ft.




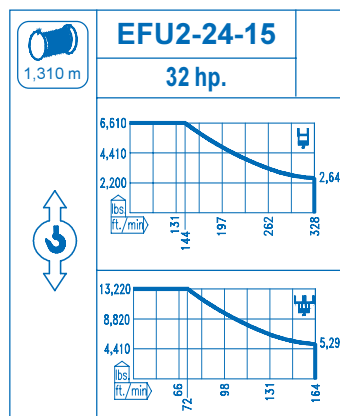
<b>R. máx.</b>	En servicio In operation En service In Betrieb
	<b>XR2H ... 90,390 lbs. XR3H . 116,840 lbs.</b>

<b>R. máx.</b>	Fuera de servicio Out of service Hors service Ausser Betrieb
	<b>XR2H ... 88,180 lbs. XR3H . 174,160 lbs.</b>

<b>CFU-4.0</b>
<b>5.4 hp.</b>
<b>0 295 ft./min</b>

<b>GR-4.5</b>
<b>2x33 ft.lbs.</b>
<b>0 0.7 rpm</b>

	
<b>TS2-4.5</b>	<b>TS2-5.5</b>
<b>2x33 ft.lbs.</b>	<b>2x40 ft.lbs.</b>
<b>0   ➡   65 ft./min</b>	
<b>XR2H</b>	<b>XR3H</b>



Tensión de alimentación Operating voltage Tension de service Betriebsspannung	<b>480 V 3 ph 60 Hz</b>
--	---------------------------------

Opcional Optional En option Kaufoption	<b>*</b>
---	----------