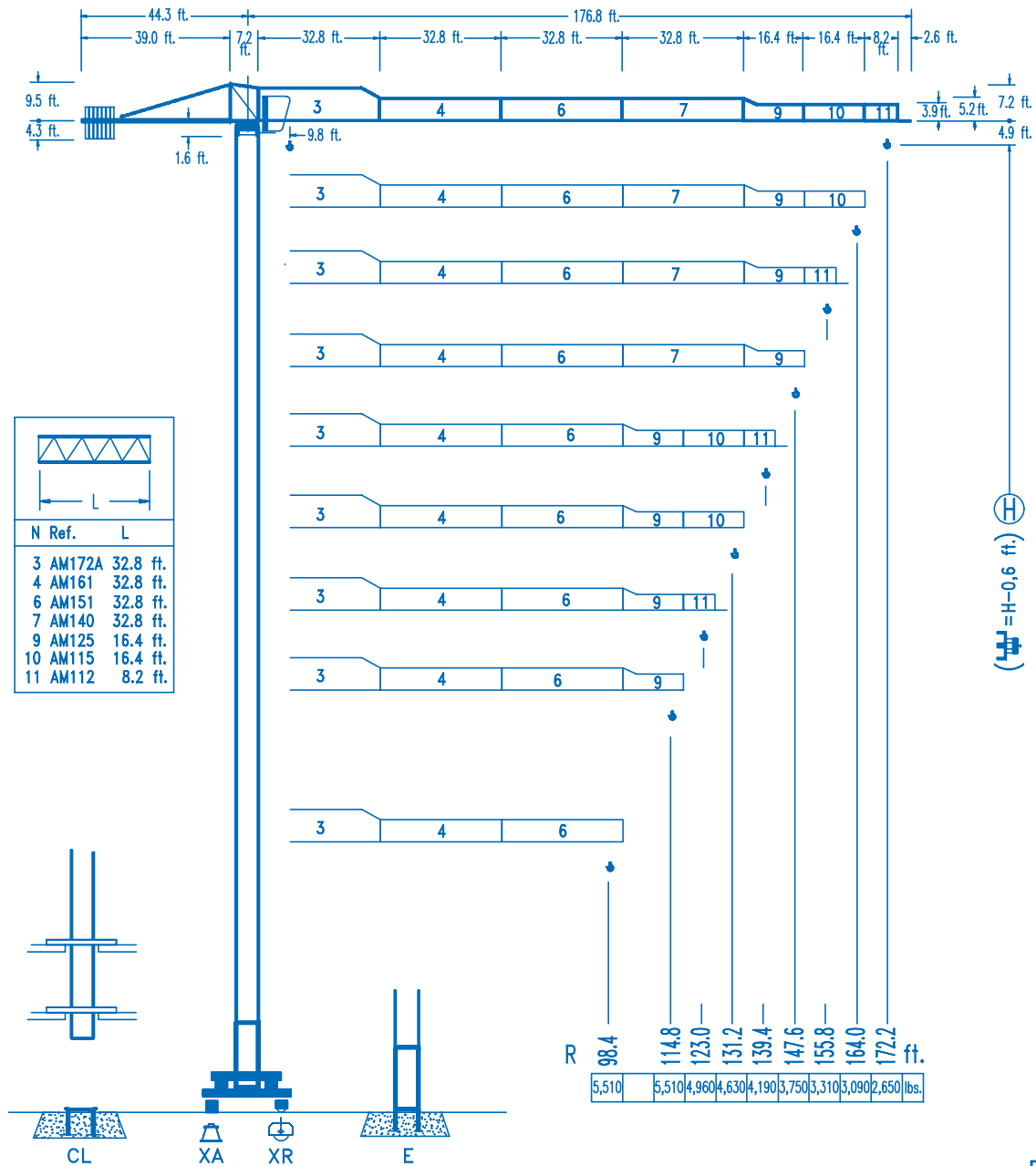


**LINDEN 1100**

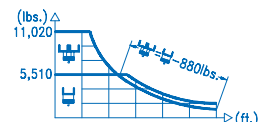
**11 LC 90**

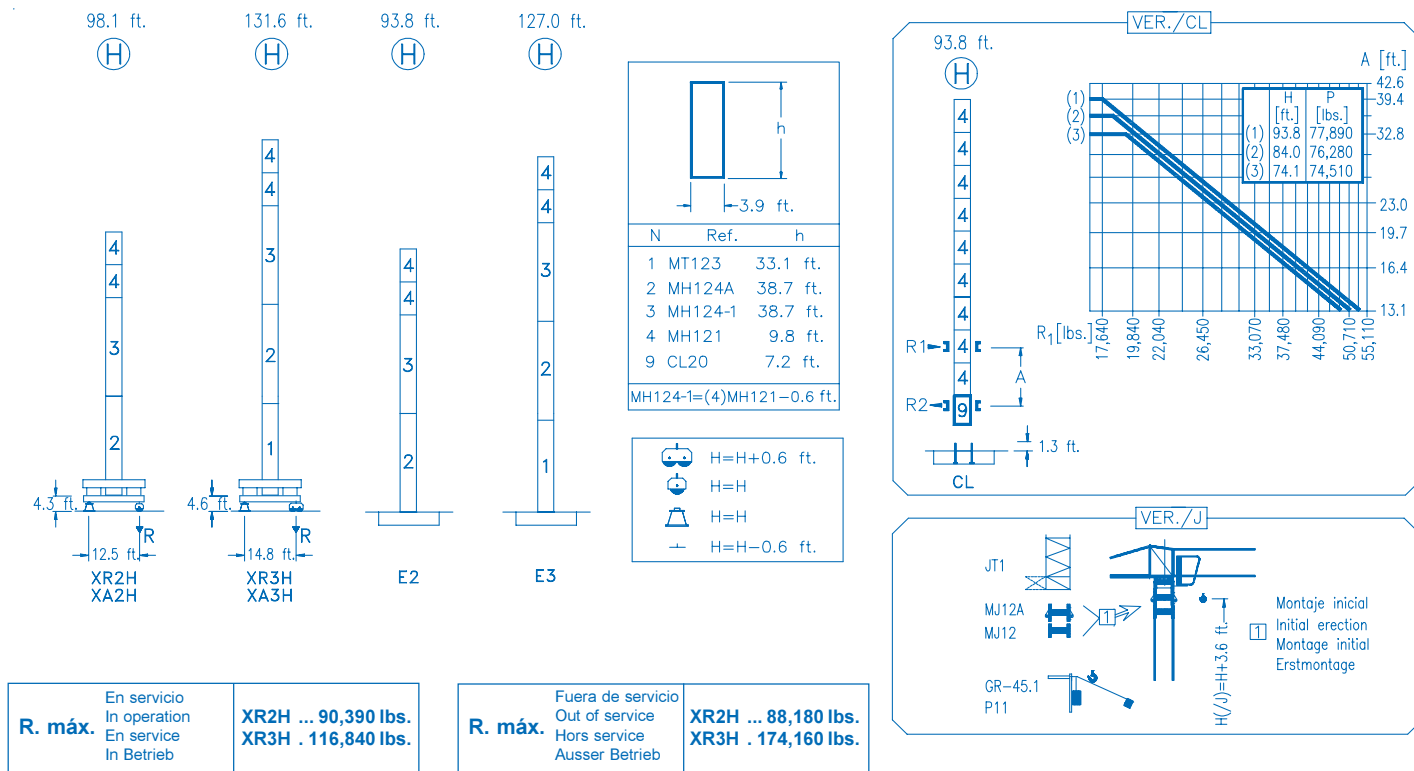
**11,020 lbs.**



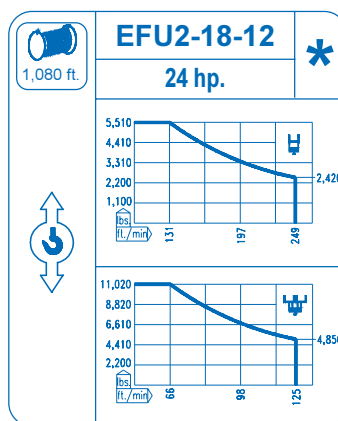
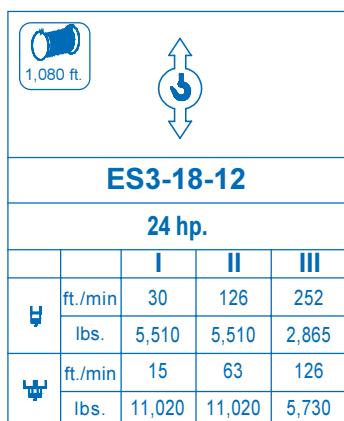
**CE**  
DIN 15018 H1 B3

R																	
	48.9	52.5	59.1	65.6	72.2	82.0	84.0	95.5	105.0	114.8	123.0	131.2	139.4	147.6	155.8	164.0	172.2 ft.
172.2	11,020	10,100	8,730	7,630	6,750	5,710	5,510	5,510	4,920	4,410	4,060	3,750	3,480	3,240	3,020	2,820	2,650 lbs.
164.0		52.2	59.1	65.6	72.2	82.0	89.9	102.0	105.0	114.8	123.0	131.2	139.4	147.6	155.8	164.0 ft.	
155.8		11,020	9,460	8,290	7,340	6,220	5,510	5,510	5,340	4,810	4,410	4,080	3,790	3,530	3,280	3,090 lbs.	
147.6		52.2	59.1	65.6	72.2	82.0	89.9	102.4	105.0	114.8	123.0	131.2	139.4	147.6	155.8 ft.		
139.4		11,020	9,480	8,310	7,360	6,240	5,510	5,510	5,360	4,810	4,430	4,100	3,790	3,550	3,310 lbs.		
131.2		54.5	59.1	65.6	72.2	82.0	91.9	93.8	107.0	114.8	123.0	131.2	139.4	147.6 ft.			
123.0		11,020	9,990	8,770	7,780	6,590	5,690	5,510	5,070	4,670	4,320	4,010	3,750	3,500	3,250 lbs.		
114.8			56.1	65.6	72.2	82.0	91.9	97.1	110.6	114.8	123.0	131.2	139.4 ft.				
98.4			11,020	9,100	8,090	6,880	5,930	5,510	5,510	5,290	4,870	4,500	4,190 lbs.				
			57.4	65.6	72.2	82.0	91.9	95.1	99.1	113.2	123.0	131.2 ft.					
			11,020	9,350	8,290	7,050	6,080	5,800	5,510	5,510	5,000	4,630 lbs.					
			56.8	65.6	72.2	82.0	91.9	95.1	98.1	112.5	123.0 ft.						
			11,020	9,260	8,220	6,990	6,020	5,750	5,510	5,510	4,960 lbs.						
			57.7	65.6	72.2	82.0	91.9	95.1	100.1	114.8 ft.							
			11,020	9,460	8,400	7,140	6,170	5,890	5,510	5,510 lbs.							
			56.4	65.6	72.2	82.0	91.9	98.4	100.1	114.8 ft.							
			11,020	9,130	8,090	6,880	5,930	5,510	5,510	5,510							





<b>CS2-1.9</b>	<b>CFU-2.2</b>	<b>GR-4.5</b>	<b>TS2-4.5</b> <b>TS2-5.5</b>
<b>2.5 hp.</b>	<b>2.9 hp.</b>	<b>2x33 ft.lbs.</b>	<b>2x33 ft.lbs.</b> <b>2x40 ft.lbs.</b>
55 ft./min 157 ft./min	0 ⇄ 262 ft./min	0 ⇄ 0.7 rpm	0 ⇄ 65 ft./min
			<b>XR2H</b> <b>XR3H</b>



Tensión de alimentación Operating voltage Tension de service Betriebsspannung	<b>480 V</b> <b>3 ph</b> <b>60 Hz</b>
--	---

Opcional Optional En option Kaufoption	<b>*</b>
---	----------