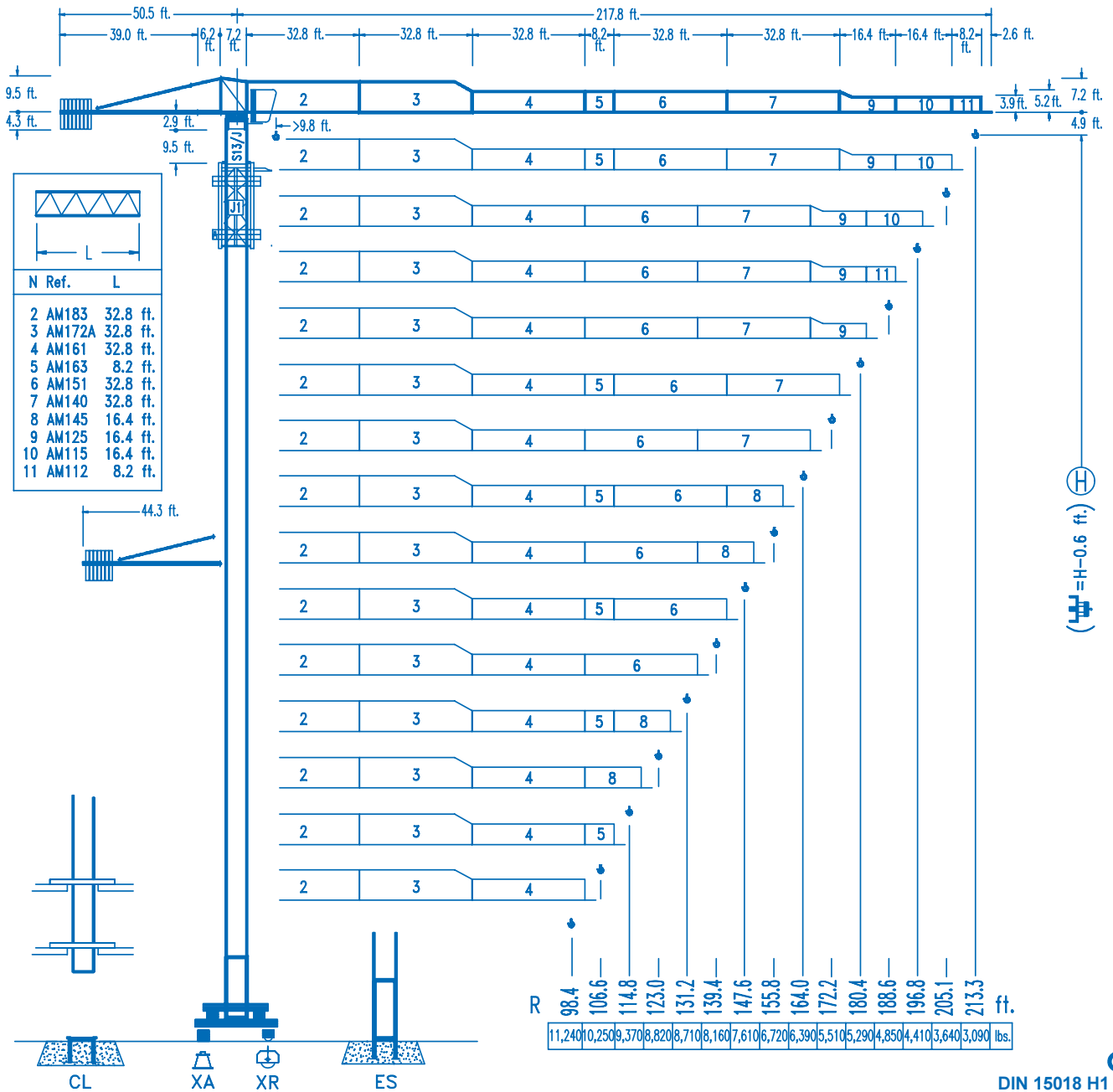






LINDEN 1100

11 LC 160

17,640 lbs.



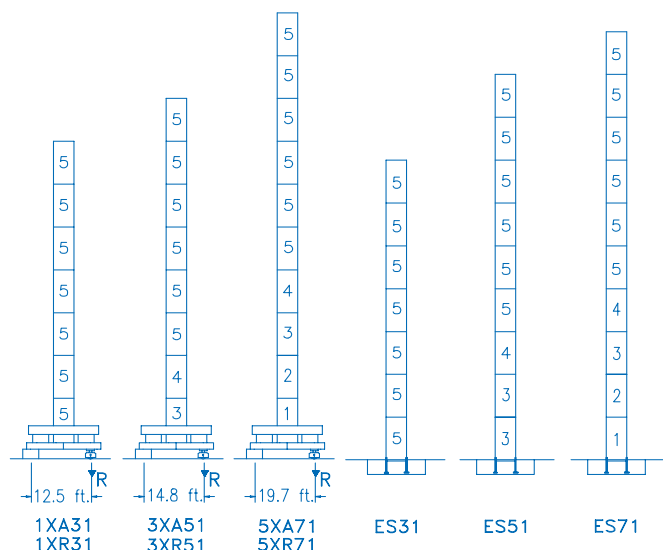
CE
DIN 15018 H1 B3

R																							
213.3	45.3 17,640	49.2 15,980	65.6 11,380	81.0 8,820	87.9 8,820	91.9 8,380	98.4 7,760	106.6 7,080	114.8 6,500	123.0 6,020	131.2 5,580	139.4 5,180	147.6 4,850	155.8 4,540	164.0 4,280	172.2 4,030	180.4 3,810	188.6 3,590	196.8 3,420	205.1 3,240	213.3 3,090 lbs.	ft.	
205.1	49.5 17,640	65.6 12,610	75.5 10,690	88.3 8,820	88.3 8,820	98.4 8,580	106.6 7,850	114.8 7,210	123.0 6,660	131.2 6,190	139.4 5,780	147.6 5,400	155.8 5,070	164.0 4,760	172.2 4,500	180.4 4,250	188.6 4,030	196.9 3,840	205.1 3,640	lbs.		ft.	
196.8	55.1 17,640	65.6 14,400	75.5 12,210	82.0 11,070	82.0 9,660	98.8 8,820	107.9 8,820	114.8 8,220	123.0 7,610	131.2 7,080	139.4 6,590	147.6 6,170	155.8 5,800	164.0 5,470	172.2 5,160	180.4 4,890	188.6 4,630	196.9 4,410	lbs.		ft.		
188.6	57.1 17,640	65.6 14,990	75.5 12,740	82.0 11,550	82.0 10,080	98.8 8,820	105.3 8,820	115.2 8,580	123.0 7,940	131.2 7,390	139.4 6,880	147.6 6,460	155.8 6,060	164.0 5,710	172.2 5,400	180.4 5,110	188.6 4,850	lbs.				ft.	
180.4	58.7 17,640	65.6 15,480	75.5 13,160	82.0 11,930	82.0 10,430	98.8 9,590	105.3 8,820	115.2 8,820	123.0 8,200	131.2 7,630	139.4 7,120	147.6 6,680	155.8 6,260	164.0 5,910	172.2 5,580	180.4 5,290	lbs.				ft.		
172.2	57.7 17,640	65.6 15,260	75.5 12,960	82.0 11,750	82.0 10,270	98.8 2,200	105.3 8,820	115.2 8,750	123.0 8,090	131.2 7,520	139.4 7,030	147.6 6,590	155.8 6,190	164.0 5,840	lbs.							ft.	
164.0	62.3 17,640	65.6 16,670	75.5 14,180	82.0 12,870	82.0 11,270	98.8 10,380	105.0 9,590	112.5 8,820	123.4 8,820	131.2 8,220	139.4 7,690	147.6 7,210	155.8 6,770	164.0 6,390	ft.							lbs.	
155.8	62.0 17,640	65.6 16,510	75.5 14,070	82.0 12,760	82.0 11,160	98.8 10,270	105.0 9,500	111.5 8,820	122.4 8,820	131.2 8,160	139.4 7,630	147.6 7,140	155.8 6,720	ft.							lbs.		
147.6	65.3 17,640	75.5 14,950	82.0 13,560	91.9 11,880	98.4 10,960	105.0 10,140	117.8 8,820	129.3 8,820	131.2 8,690	139.4 8,110	147.6 7,610	ft.							lbs.				
139.4	65.6 17,640	75.5 15,010	82.0 13,620	91.9 11,930	98.4 11,000	105.0 10,190	118.1 8,820	129.9 8,820	131.2 8,730	139.4 8,160	ft.							lbs.					
131.2	65.3 17,640	75.5 14,950	82.0 13,580	91.9 11,880	98.4 10,960	105.0 10,140	117.8 8,820	129.9 8,820	131.2 8,710	ft.							lbs.						
																							R

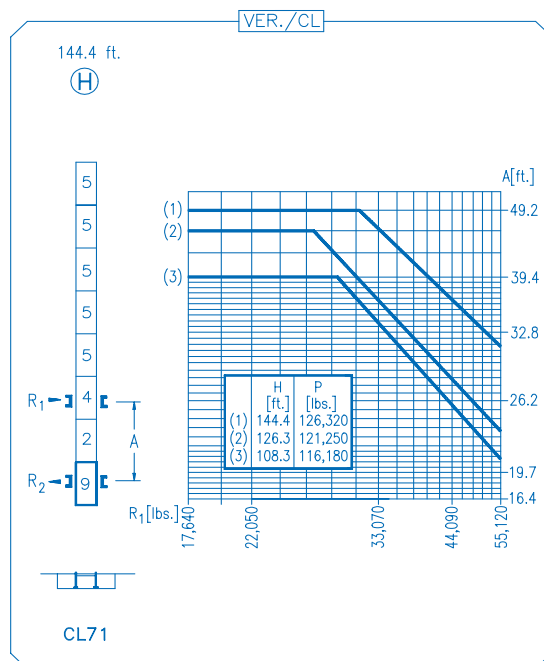
DS.0840.06

10/08 Reserva de modificaciones.- Subject to modifications.- Modifications réservées.- Konstruktionsänderungen vorbehalten.

139.1 ft. (H) 157.2 ft. (H) 194.2 ft. (H) 134.2 ft. (H) 170.3 ft. (H) 188.3 ft. (H)



N	Ref.	h
1	S15	18.0 ft.
2	TS15	18.0 ft.
3	S14	18.0 ft.
4	TS14	18.0 ft.
5	S13	18.0 ft.
9	CLS15	10.2 ft.



R. máx.	En servicio	1XR31 164,460 lbs.
	In operation	3XR51 157,630 lbs.
	En service	5XR71 154,100 lbs.
	In Betrieb	

R. máx.	Fuera de servicio	1XR31 187,390 lbs.
	Out of service	3XR51 206,570 lbs.
	Hors service	5XR71 245,150 lbs.
	Ausser Betrieb	

CFU-4.0

5.4 hp.

0 ⇄ 295 ft./min

GR-7.5

2 x 55 ft.lbs.

0 ⇄ 0.7 rpm

TS2-5.5 **TRA-7.5**

2x40 ft.lbs. **2x55 ft.lbs.**

0 ⇄ 65 ft./min

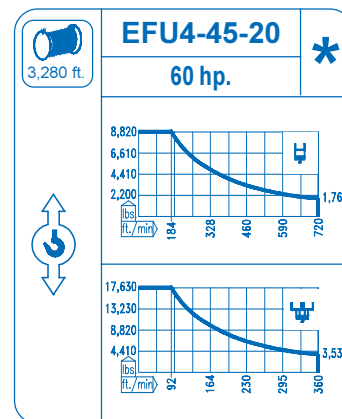
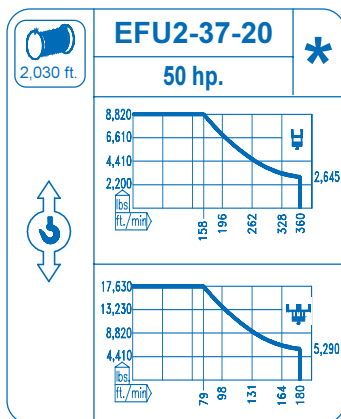
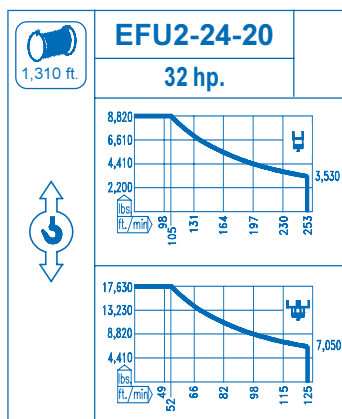
1XR31 **3XR51** **5XR 71**

TRA-7.5VC

2x55 ft.lbs.

0 ⇄ 65 ft./min

5XR71



Tensión de alimentación	400 V
Operating voltage	3 ph
Tension de service	50 Hz
Betriebsspannung	

Opcional	*
Optional	
En option	
Kaufoption	