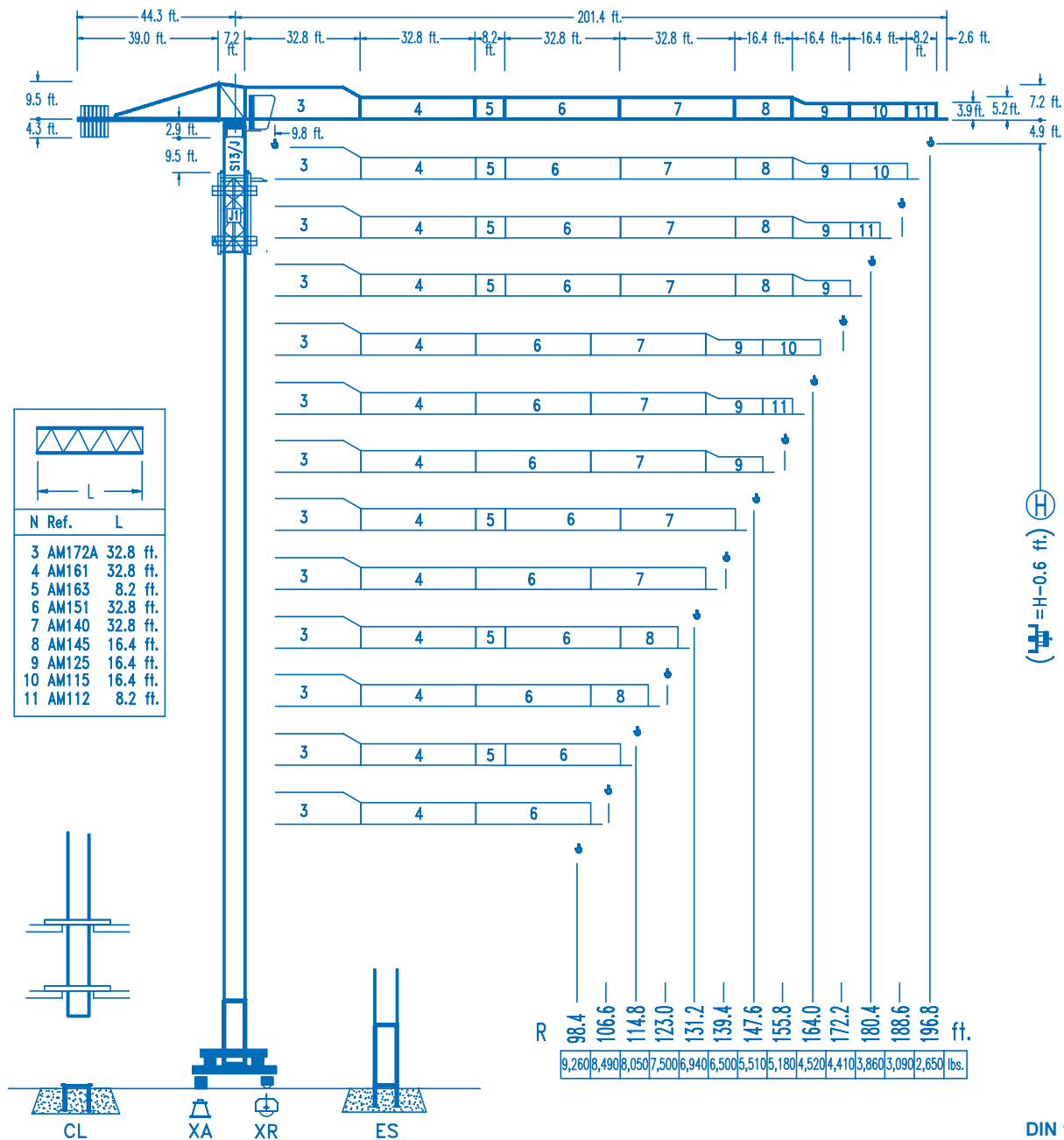




LINDEN 1100

11 LC 132

11,020 lbs.

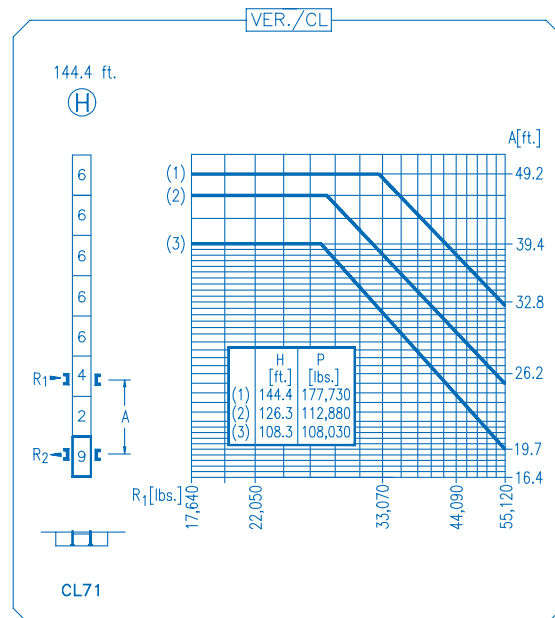
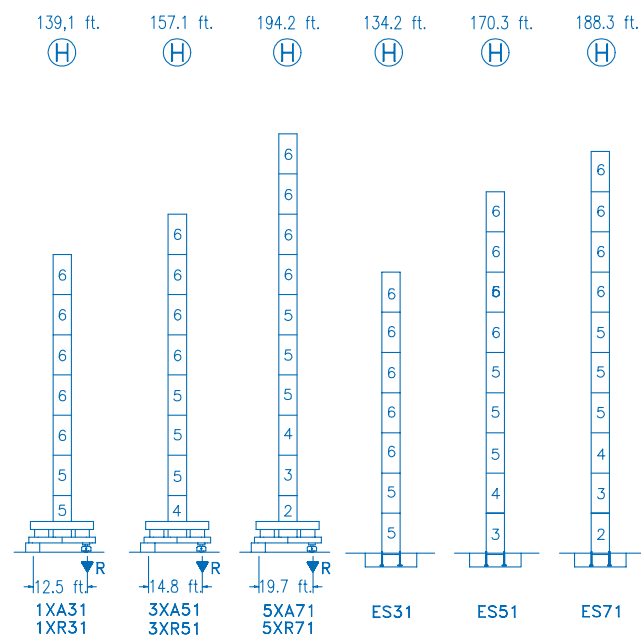


CE
DIN 15018 H1 B3

R																				
196.8	55.8 11,020	65.6 9,020	72.2 8,000	85.3 6,460	91.9 5,840	96.1 5,510	108.9 5,510	114.8 5,180	123.0 4,760	131.2 4,410	139.4 4,100	147.6 3,810	155.8 3,570	164.0 3,350	172.2 3,150	180.4 2,950	188.6 2,800	196.8 2,650	ft. lbs.	
188.6	59.7 11,020	65.6 9,830	72.2 8,750	85.3 7,080	91.9 6,440	98.4 5,890	103.3 5,510	117.5 5,510	123.0 5,200	131.2 4,830	139.4 4,500	147.6 4,190	155.8 3,920	164.0 3,680	172.2 3,460	180.4 3,260	188.6 3,090	ft. lbs.		
180.4		67.9 11,020	72.2 10,230	85.3 8,330	91.9 7,610	98.4 6,970	105.0 6,390	114.8 5,690	117.5 5,510	133.9 5,510	139.4 5,270	147.6 4,920	155.8 4,610	164.0 4,340	172.2 4,080	180.4 3,860	ft. lbs.			
172.2			72.2 11,020	85.3 8,990	91.9 8,200	98.4 7,520	105.0 6,920	114.8 6,170	121.4 5,730	125.0 5,510	142.7 5,510	147.6 5,290	155.8 4,960	164.0 4,670	172.2 4,410	ft. lbs.				
164.0			70.2 11,020	85.3 8,690	91.9 7,910	98.4 7,250	105.0 6,680	114.8 5,930	121.4 5,510	138.8 5,510	139.4 5,470	147.6 5,110	155.8 4,810	164.0 4,520	ft. lbs.					
155.8			74.5 11,020	85.3 9,350	91.9 8,530	98.4 7,830	105.0 7,230	114.8 6,440	121.4 5,970	128.0 5,580	129.3 5,510	148.0 5,510	155.8 5,180	ft. lbs.						
147.6			74.1 11,020	85.3 9,330	91.9 8,510	98.4 7,800	105.0 7,210	114.8 6,420	121.4 5,970	128.0 5,560	128.9 5,510	147.6 5,510	ft. lbs.							
139.4					90.2 11,020	98.4 9,920	105.0 9,170	114.8 8,200	121.4 7,650	131.2 6,940	139.4 6,500	ft. lbs.								
131.2						89.2 11,020	98.4 9,790	105.0 9,060	114.8 8,110	121.4 7,560	131.2 6,940	ft. lbs.								
123.0					88.6 11,020	91.9 10,580	98.4 9,720	105.0 8,990	114.8 8,050	123.0 7,500	ft. lbs.									
																			R	

DS.0840.03

10/08 Reserva de modificaciones.- Subject to modifications.- Modifications réservées.- Konstruktionsänderungen vorbehalten.



R. máx.	En servicio	1XR31 ... 155,860 lbs. 3XR51 ... 149,910 lbs. 5XR71 ... 159,170 lbs.
	In operation	
	En service	
	In Betrieb	

R. máx.	Fuera de servicio	1XR31 ... 198,850 lbs. 3XR51 ... 215,170 lbs. 5XR71 ... 251,100 lbs.
	Out of service	
	Hors service	
	Ausser Betrieb	

CS2-1.9

2.5 hp.

**55 ft./min
157 ft./min**

CFU-2.2

2.9 hp.

0 ⇄ 262 ft./min

GR-5.5

2x40 ft.lbs.

0 ⇄ 0.7 rpm

TS2-5.5 **TRA-7.5**

2x40 ft.lbs. **2x55 ft.lbs.**

0 ⇄ 65 ft./min

**1XR31
3XR51** **5XR 71**

TRA-7.5VC

2x55 ft.lbs.

0 ⇄ 65 ft./min

5XR71

ES3-18-12

24 hp.

		I	II	III
	ft./min	30	126	252
	lbs.	5,510	5,510	2,865
	ft./min	15	63	126
	lbs.	11,020	11,020	5,730

EFU2-18-12

24 hp.

H [ft.]	P [lbs.]
(1) 144,4	177,730
(2) 126,3	112,880
(3) 108,3	108,030

Tensión de alimentación	480 V
Operating voltage	3 ph
Tension de service	60 Hz
Betriebsspannung	

Opcional	*
Optional	
En option	
Kaufoption	